

C:\Projects\9020141 - Washington - North D Ave - Sidewalk Investigation\Drafting\Civil 3D Plan Drawings\Cons Plan 9020141.dwg

GENERAL SYMBOLS LEGEND

- | | |
|---|--|
| ● = PROPERTY CORNER FOUND | — = SIGN |
| ▲ = SECTION CORNER FOUND | ⊙ = BOLLARD |
| —000— = EXISTING GROUND CONTOUR LINE | ✕ = RAILROAD GATE OR SIGNAL |
| —W— = EXISTING WATER LINE (SIZE VARIES) | MB = MAILBOX |
| ⊕ = EXISTING FIRE HYDRANT | — = FLAGPOLE |
| ⊕ = EXISTING WATER VALVE | DS = DOWNSPOUT |
| ⊕ = EXISTING WATER SERVICE SHUTOFF | ☀ = TREE OR SHRUB |
| ⊕ = EXISTING WATER METER PIT | ♣ = STUMP |
| ⊕ = EXISTING WATER WELL | —x— = FIELD FENCELINE |
| ⊕ = WATER METER | —o— = CHAIN LINK FENCELINE |
| —ST— = EXISTING STORM SEWER LINE (SIZE VARIES) | —w— = WOOD FENCELINE |
| ⊕ = EXISTING STORM SEWER ACCESS | — = SILT FENCE |
| ⊕ = EXISTING SEPTIC TANK | ⊕ = BENCHMARK OR ELEVATION MARKER |
| ⊕ = EXISTING SANITARY SEWER ACCESS | ○ = PROPERTY CORNER SET |
| —SS— = EXISTING SANITARY SEWER MAIN (SIZE VARIES) | △ = SECTION CORNER SET |
| ⊕ = CLEANOUT | —W— = PROPOSED WATER MAIN (SIZE VARIES) |
| ⊕ = ELECTRIC MANHOLE | ⊕ = PROPOSED FIRE HYDRANT |
| —OE— = OVERHEAD ELECTRIC LINE | ⊕ = PROPOSED WATER VALVE |
| —UE— = UNDERGROUND ELECTRIC LINE | ⊕ = PROPOSED WATER SHUTOFF |
| ⊕ = ELECTRIC METER | ⊕ = PROPOSED SANITARY SEWER MANHOLE |
| —FO— = FIBEROPTIC LINE | ⊕ = PROPOSED SANITARY SEWER END LINE CLEANOUT |
| ⊕ = TELEPHONE MANHOLE | ⊕ = PROPOSED SANITARY SEWER DOUBLE CLEANOUT |
| ⊕ = TELEPHONE PEDESTAL | — = PROPOSED SANITARY SEWER MAIN (SIZE VARIES) |
| —UT— = TELEPHONE LINE | ⊕ = PROPOSED LIFT STATION |
| ⊕ = TELEVISION PEDESTAL | —FM— = PROPOSED SANITARY SEWER FORCE MAIN |
| —TV— = TELEVISION LINE | ⊕ = PROPOSED STORM SEWER ACCESS |
| ⊕ = GAS METER | — = PROPOSED STORM SEWER MAIN |
| ⊕ = GAS VALVE | —SST— = PROPOSED SECONDARY STORM SEWER |
| —G— = EXISTING GAS LINE | —000— = PROPOSED GROUND CONTOUR LINE |
| ⊕ = UTILITY POLE | ▨ = SURFACING REMOVAL |
| ● = GUY WIRE | □ or ▨ = CONCRETE SURFACING REPLACEMENT |
| ⊕ = LUMINAIRE | → = FLOW DIRECTION ARROW |
| ⊕ = TRANSFORMER | ● = FINISH GRADE ELEVATION MARKER |

GENERAL ABBREVIATIONS LEGEND

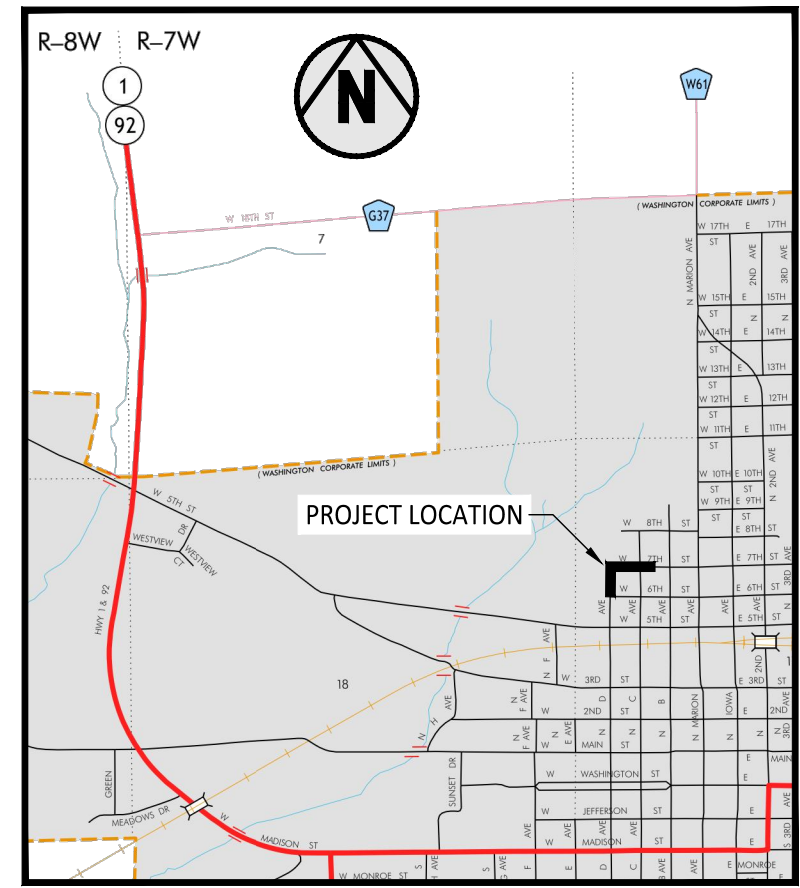
- | | |
|------------------------------|--------------------------------|
| R/W = RIGHT OF WAY | SY = SQUARE YARD |
| R.O.W. = RIGHT OF WAY | CY = CUBIC YARD |
| P.C. = POINT OF CURVATURE | MJ = MECHANICAL JOINT |
| P.I. = POINT OF INTERSECTION | PE = PLAIN END JOINT |
| P.T. = POINT OF TANGENCY | FE = FLANGED JOINT |
| CL = CENTERLINE | UT = UNION TITE JOINT |
| TC = TOP OF CURB | S.S. = STAINLESS STEEL |
| GU = GUTTER | O.C. = ON CENTER |
| FL = FLOW LINE | I.D. = INSIDE DIAMETER |
| SB = SOIL BORING | O.D. = OUTSIDE DIAMETER |
| R = RADIUS | ∅ = DIAMETER |
| BTM = BOTTOM | DIA. = DIAMETER |
| HWL = HIGH WATER LEVEL | # = NUMBER |
| LWL = LOW WATER LEVEL | TYP = TYPICAL |
| EA = EACH | INV = INVERT |
| GPM = GALLONS PER MINUTE | PVC = POLYVINYL CHLORIDE PIPE |
| IN. = INCHES | DIP = DUCTILE IRON PIPE |
| FT = FOOT OR FEET | CIP = CAST IRON PIPE |
| SF = SQUARE FEET | CMP = CORRUGATED METAL PIPE |
| LF = LINEAR FOOT | RCP = REINFORCED CONCRETE PIPE |

ESTIMATED QUANTITIES		
ITEM	UNIT	ESTIMATED QUANTITY
EXCAVATION	CY	130
CLEARING AND GRUBBING	LS	1
PAVEMENT REMOVAL (CURB & GUTTER)	SY	6
DRIVEWAY REMOVAL	SY	186
SIDEWALK REMOVAL	SY	66
4" PCC SIDEWALK	SY	309
6" PCC SIDEWALK	SY	94
6" PCC DRIVEWAY	SY	158
DETECTABLE WARNINGS	SF	40
COMBINED SIDEWALK AND RETAINING WALL	CY	15
PCC CURB AND GUTTER (2'x7")	LF	25
SEEDING, FERTILIZING, AND MULCHING	LS	1

CONTRACTOR SHALL PROVIDE TEMPORARY TRAFFIC CONTROL IN ACCORDANCE WITH SECTION 8030 OF THE SUDAS SPECIFICATIONS AND THE CITY OF WASHINGTON REQUIREMENTS. TEMPORARY TRAFFIC CONTROL SHALL CONSIST OF BARRICADES, SIGNAGE AND LIGHTS AS NECESSARY TO PROTECT VEHICLES AND PEDESTRIAN TRAFFIC. CONTRACTOR SHALL MAINTAIN, CLEAN AS NECESSARY AND REPLACE DAMAGED TEMPORARY TRAFFIC CONTROL DEVICES THROUGHOUT DURATION OF THE PROJECT.

REVISIONS:

SCALE: 0 5 10
APPROVED: JP
DRAWN BY: KJR



LOCATION MAP

HORIZONTAL DATUM	IOWA RCS ZONE 13 - FAIRFIELD
VERTICAL DATUM	NAVD 1988

CONTROL POINT TABLE				
POINT NO.	NORTHING	EASTING	ELEVATION	DESCRIPTION
200	6784131.18	23560492.49	757.79	CP 200 5/8 RBR RPC
201	6784460.39	23560497.52	752.91	CP 201 5/8 RBR RPC
202	6784496.79	23560872.54	745.89	CP 202 MAG NW COR INTK

GARDEN & ASSOCIATES, LTD.
ENGINEERS & SURVEYORS

1701 3rd Avenue East, Suite 1
Creston, Iowa 50801
P.O. Box 451
Oskaloosa, Iowa 52577

500 E. Taylor, Suite C
Creston, Iowa 50801
641.782.4005 Phone
641.782.4118 Fax

800.491.2524 Iowa Toll Free
email@gardenassociates.net

WELLNESS PARK ADDITION
NORTH AVE. D & WEST 7TH ST.
SIDEWALK IMPROVEMENTS
WASHINGTON, IOWA

© COPYRIGHT 2020 GARDEN & ASSOCIATES, LTD.

SHEET TITLE
LEGEND, LOCATION
MAP AND GENERAL
NOTES

DATE:
SEP. 15, 2020

PROJECT NO.:
9020141

SHEET NO.:
A.02

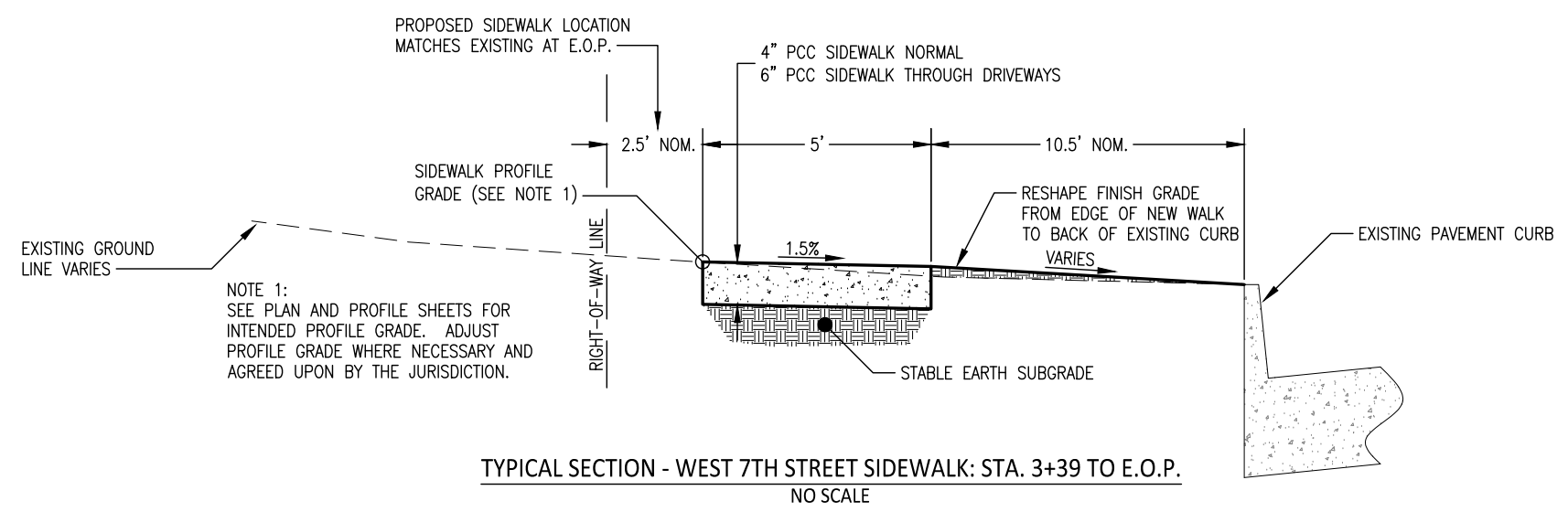
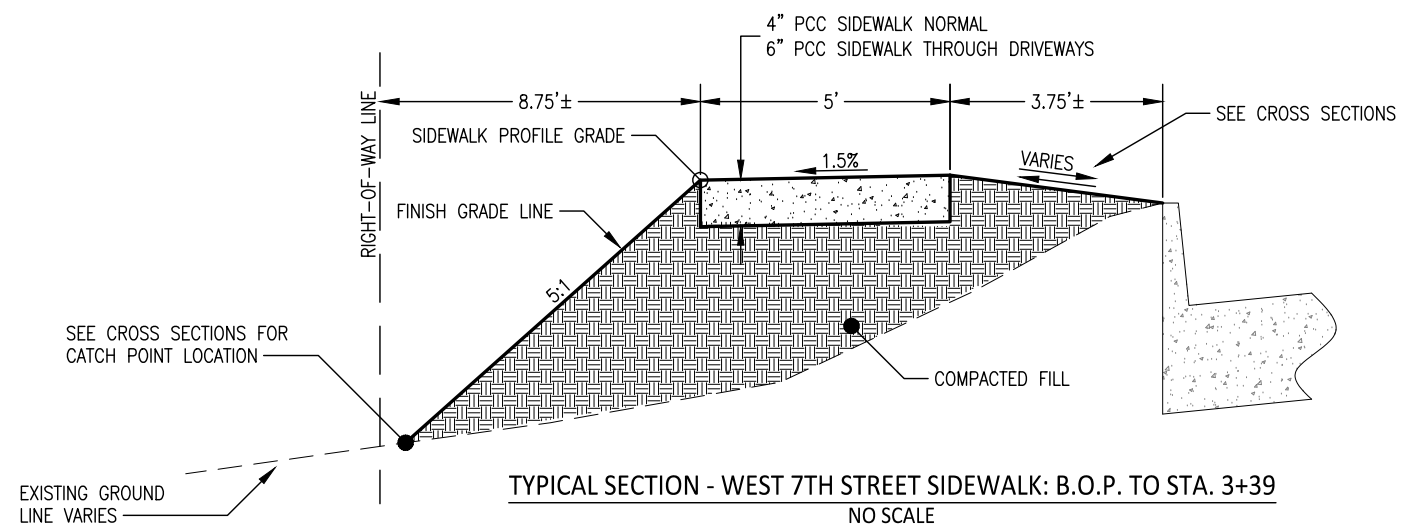
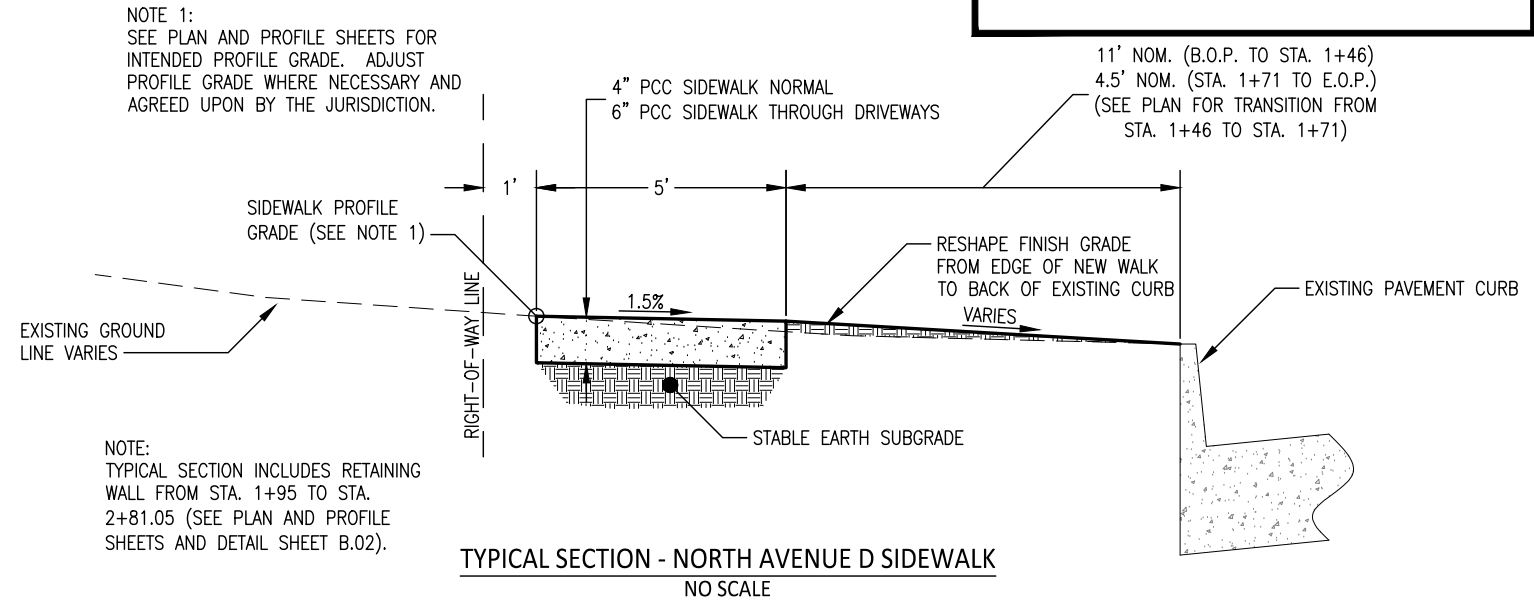
C:\Projects\9020141 - Washington - North D Ave - Sidewalk Investigation\Drafting\Civil 3D Plan Drawings\Cons Plan 9020141.dwg

REVISIONS:



APPROVED: JP

DRAWN BY: KJR



GARDEN & ASSOCIATES, LTD.
ENGINEERS & SURVEYORS

500 E. Taylor, Suite C
Creston, Iowa 50801
641.782.4005 Phone
641.782.4118 Fax

1701 3rd Avenue East, Suite 1
P.O. Box 451
Oskaola, Iowa 52577
641.672.2526 Phone
641.672.2091 Fax

800.491.2524 Iowa Toll Free
email@gardenassociates.net

WELLNESS PARK ADDITION
NORTH AVE. D & WEST 7TH ST.
SIDEWALK IMPROVEMENTS
WASHINGTON, IOWA

© COPYRIGHT 2020 GARDEN & ASSOCIATES, LTD.

SHEET TITLE
TYPICAL SECTIONS
AND DETAILS

DATE:
SEP. 15, 2020

PROJECT NO.:
9020141

SHEET NO.:
B.01

REVISIONS:

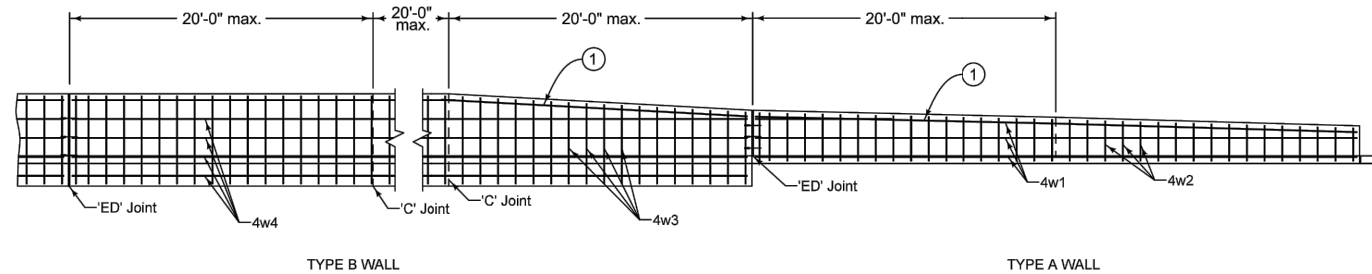


APPROVED: JP

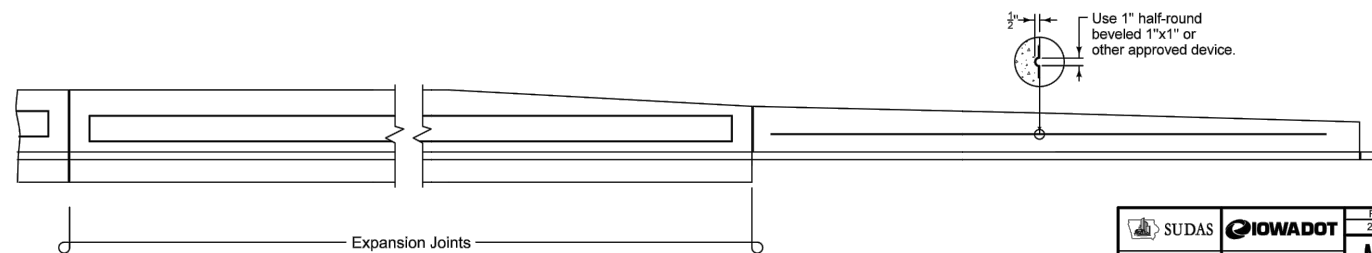
DRAWN BY: KJR

Provide a minimum concrete cover to rear reinforcement of 1 1/2 inches. Provide 3 inches minimum cover at the ends of bars.

① Top bar parallel to top of wall. Lap 6 inch minimum as necessary. Tie securely.



TYPICAL LONGITUDINAL SECTION OF RETAINING WALL



TYPICAL RUSTICATION DETAIL

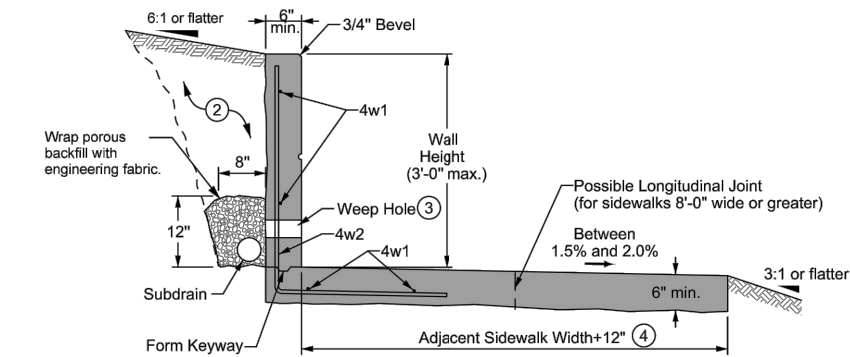
SUDAS	IOWADOT	REVISION
FIGURE 9072.221	STANDARD ROAD PLAN	2 10-20-15
		MI-221
		SHEET 1 OF 2
REVISIONS: Replaced DOT and SUDAS logos with new versions.		
<i>Paul D. Wigand</i> SUDAS DIRECTOR <i>Brian Smith</i> DESIGN METHODS ENGINEER		
COMBINED RETAINING WALL - SIDEWALK		

FIGURE 9072.221 SHEET 1 OF 2

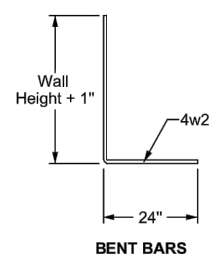
Provide a minimum concrete cover to rear reinforcement of 1 1/2 inches. Provide 3 inches minimum cover at the ends of bars.

- ② Excavate and place backfill material as necessary.
- ③ Provide 3 inch diameter weep holes at 8 foot intervals. Install rodent guards in weep holes. Align bottom of weep hole with top of subdrain.

④ Additional 12 inch width is adjacent to wall.
 NOTE: TOTAL SIDEWALK WIDTH IS 5' (FROM BASE OF WALL TO EDGE OF SIDEWALK).

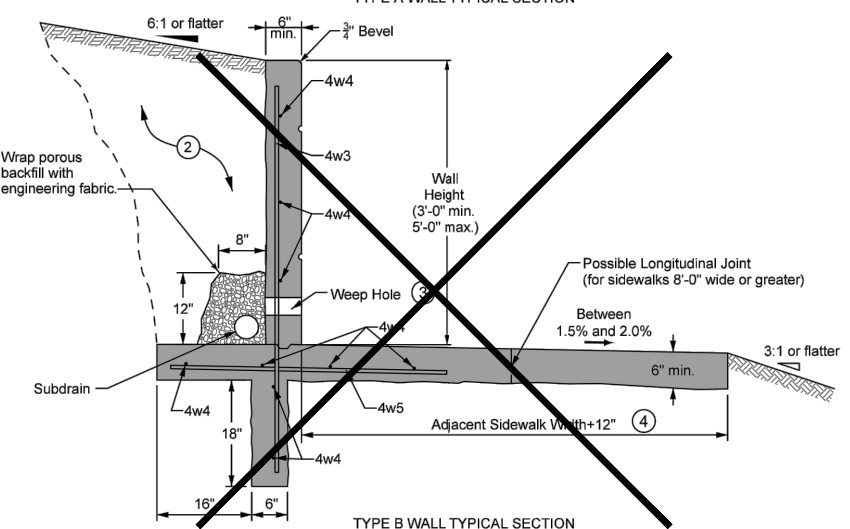


TYPE A WALL TYPICAL SECTION



BENT BARS

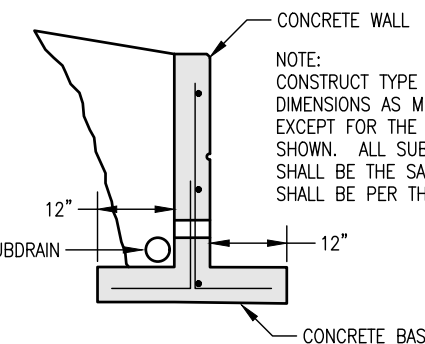
REINFORCING BAR LIST					
Wall Type	Mark	Size	Shape	Length	Spacing
Type A	4w1	4	—	Variable	15"
	4w2	4	L	Variable	14"
Type B	4w3	4	—	Wall Height + 18"	14"
	4w4	4	—	Variable	15"
	4w5	4	—	3'-10"	14"



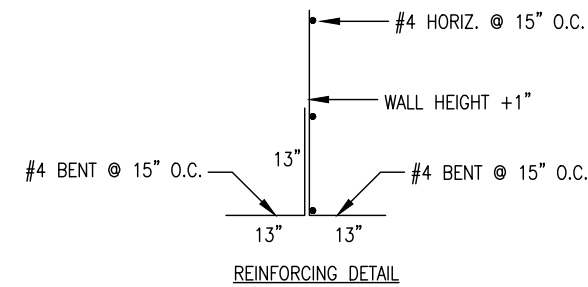
TYPE B WALL TYPICAL SECTION

SUDAS	IOWADOT	REVISION
FIGURE 9072.221	STANDARD ROAD PLAN	2 10-20-15
		MI-221
		SHEET 2 OF 2
REVISIONS: Replaced DOT and SUDAS logos with new versions.		
<i>Paul D. Wigand</i> SUDAS DIRECTOR <i>Brian Smith</i> DESIGN METHODS ENGINEER		
COMBINED RETAINING WALL - SIDEWALK		

FIGURE 9072.221 SHEET 2 OF 2



NOTE: CONSTRUCT TYPE A-1 WALL WITH SAME DIMENSIONS AS MI-211 TYPE A WALL, EXCEPT FOR THE CONCRETE BASE AS SHOWN. ALL SUBDRAIN, BACKFILL, ETC. SHALL BE THE SAME. REINFORCING SHALL BE PER THIS DETAIL.



REINFORCING DETAIL

TYPE A-1 RETAINING WALL
NO SCALE

GARDEN & ASSOCIATES, LTD.
ENGINEERS & SURVEYORS
 1701 3rd Avenue East, Suite 1
 P.O. Box 451
 Oskaloosa, Iowa 52577
 641.782.4005 Phone
 641.782.4118 Fax
 email@gardenassociates.net
 800.491.2524 Iowa Toll Free

WELLNESS PARK ADDITION
 NORTH AVE. D & WEST 7TH ST.
 SIDEWALK IMPROVEMENTS
 WASHINGTON, IOWA
 © COPYRIGHT 2020 GARDEN & ASSOCIATES, LTD.

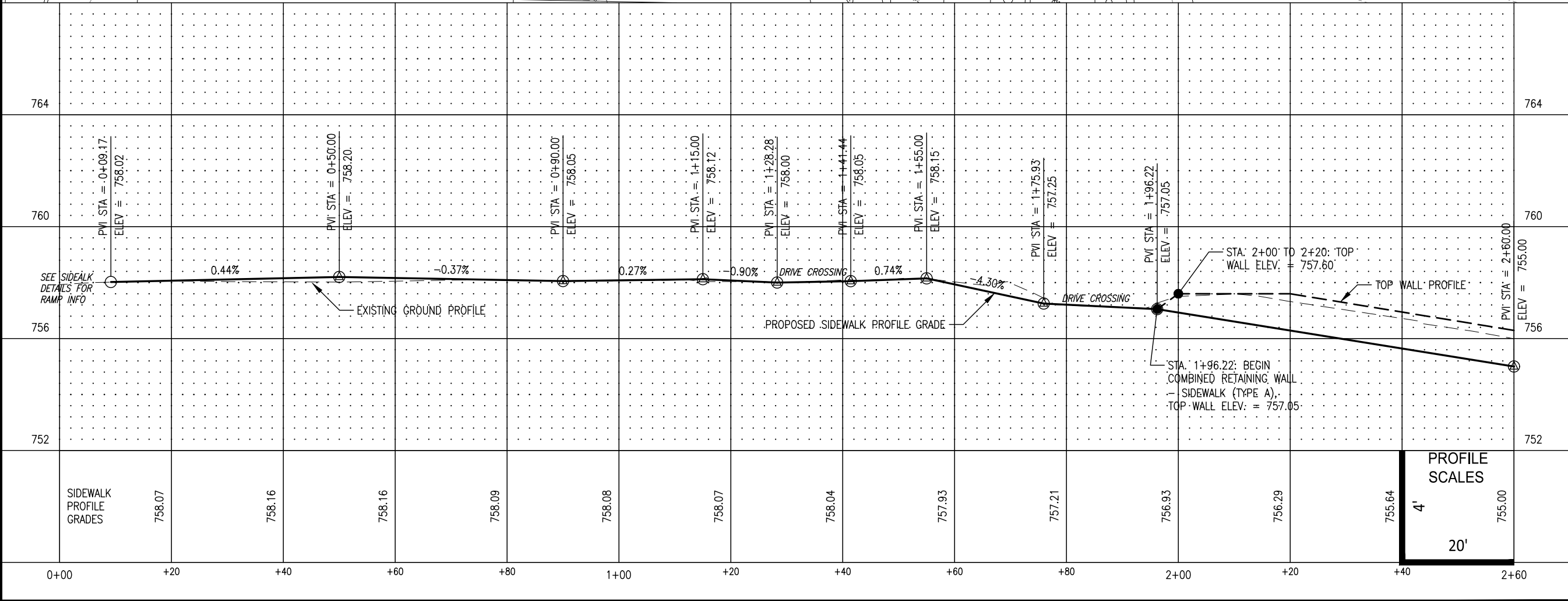
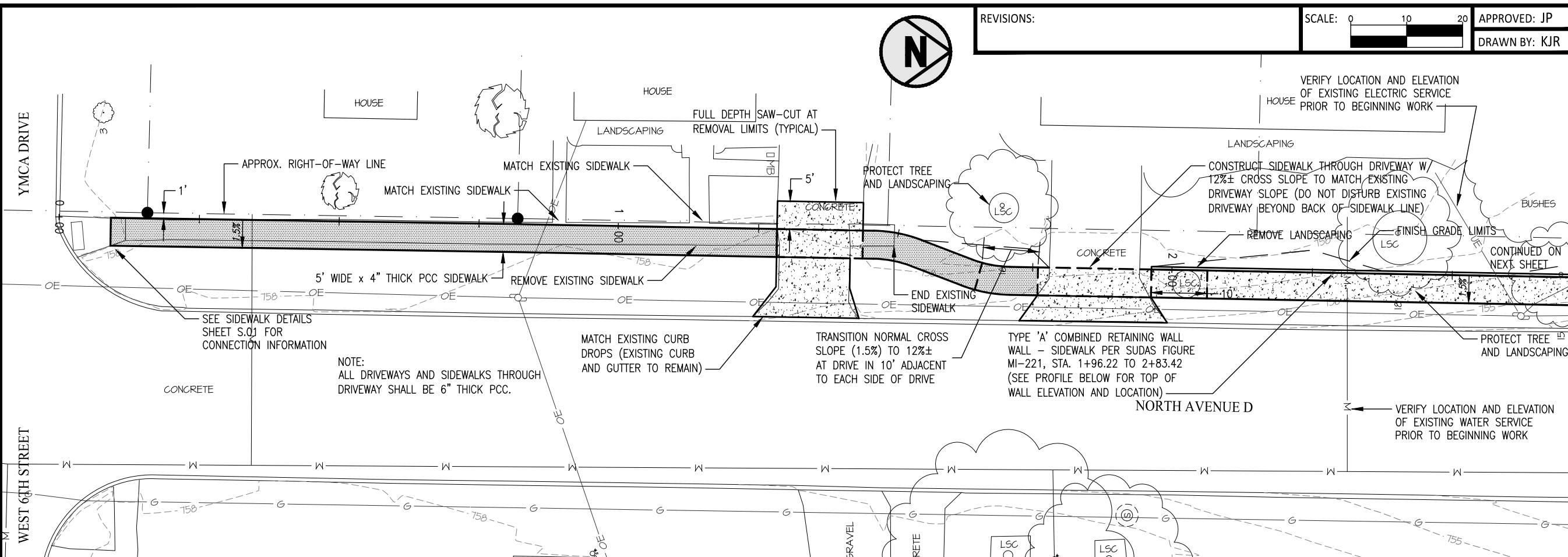
SHEET TITLE
 TYPICAL SECTIONS
 AND DETAILS

DATE:
 SEP. 15, 2020

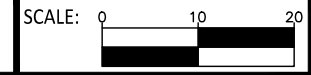
PROJECT NO.:
 9020141

SHEET NO.:
B.02

C:\Projects\9020141 - Washington - North D Ave - Sidewalk Investigation\Drafting\Civil 3D Plan Drawings\Cons Plan 9020141.dwg



REVISIONS:



APPROVED: JP
DRAWN BY: KJR



GARDEN & ASSOCIATES, LTD.
ENGINEERS & SURVEYORS

500 E. Taylor, Suite C
Creston, Iowa 50801
641.782.4005 Phone
641.782.4118 Fax

1701 3rd Avenue East, Suite 1
P.O. Box 451
Oskaaloosa, Iowa 52577
641.672.2526 Phone
641.672.2091 Fax

800.491.2524 Iowa Toll Free
email@gardenassociates.net

WELLNESS PARK ADDITION
NORTH AVE. D & WEST 7TH ST.
SIDEWALK IMPROVEMENTS
WASHINGTON, IOWA

© COPYRIGHT 2020 GARDEN & ASSOCIATES, LTD.

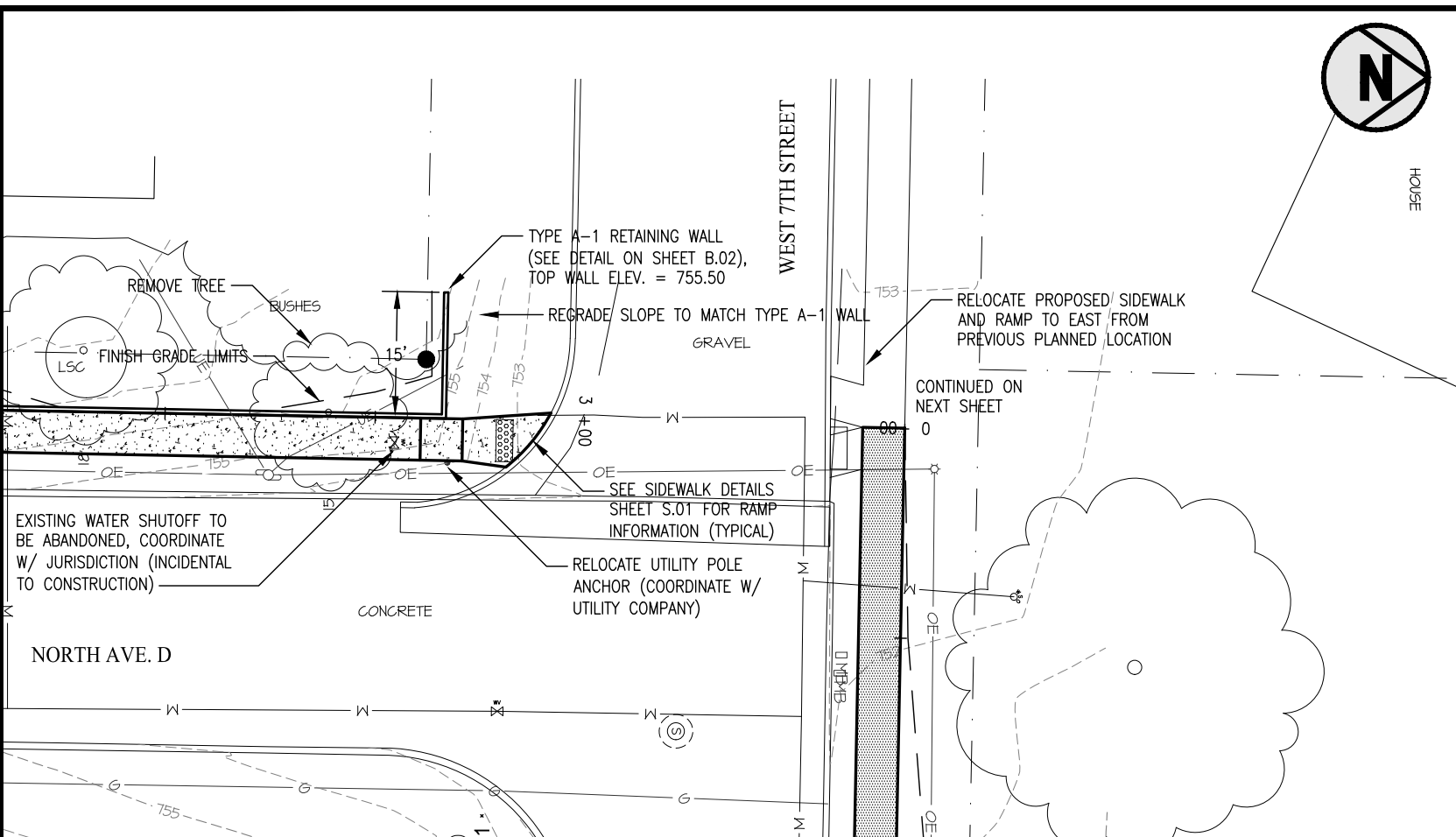
SHEET TITLE
PLAN AND PROFILE
NORTH AVE. D

DATE:
SEP. 15, 2020

PROJECT NO.:
9020141

SHEET NO.:
D.01

C:\Projects\9020141 - Washington - North D Ave - Sidewalk Investigation\Drafting\Civil 3D Plan Drawings\Cons Plan 9020141.dwg

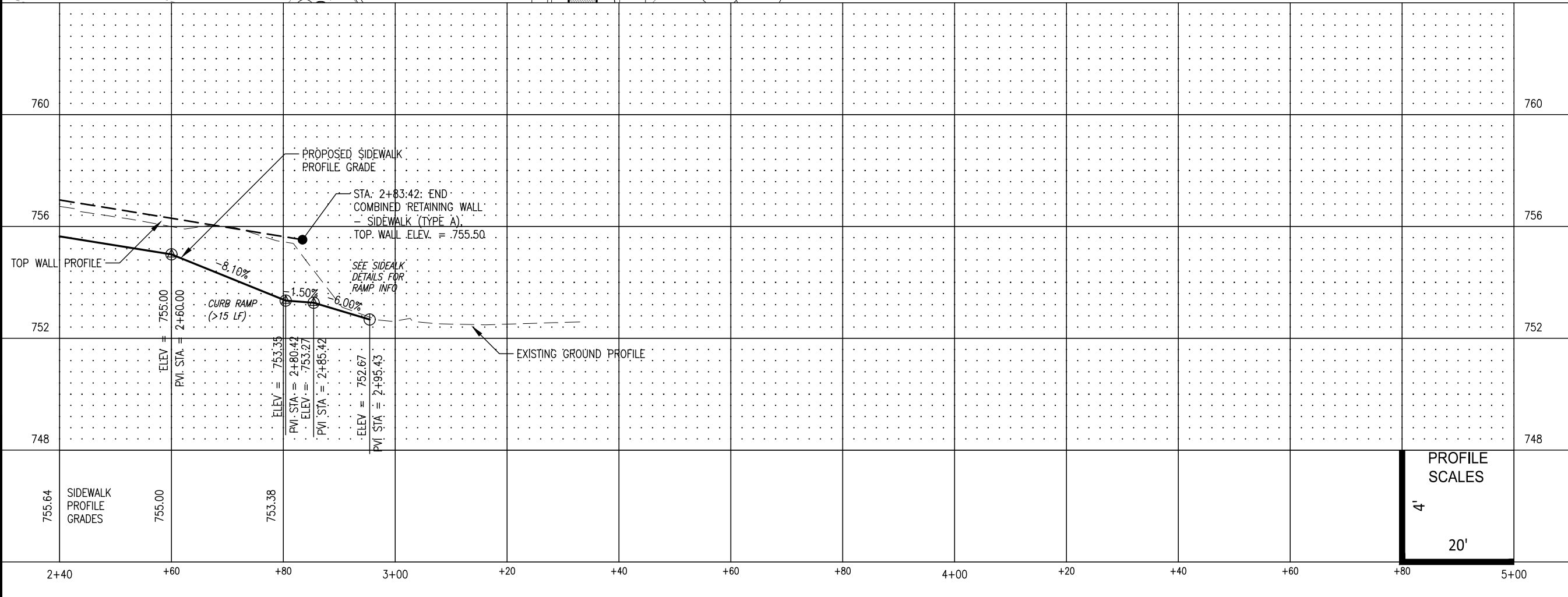


REVISIONS: _____

SCALE: 0 10 20

APPROVED: JP

DRAWN BY: KJR



GARDEN & ASSOCIATES, LTD.
ENGINEERS & SURVEYORS

500 E. Taylor, Suite C
 Creston, Iowa 50801
 641.782.4005 Phone
 641.782.4118 Fax

1701 3rd Avenue East, Suite 1
 P.O. Box 451
 Oskaola, Iowa 52577
 641.672.2526 Phone
 641.672.2091 Fax

800.491.2524 Iowa Toll Free
 email@gardenassociates.net

WELLNESS PARK ADDITION
 NORTH AVE. D & WEST 7TH ST.
 SIDEWALK IMPROVEMENTS
 WASHINGTON, IOWA

© COPYRIGHT 2020 GARDEN & ASSOCIATES, LTD.

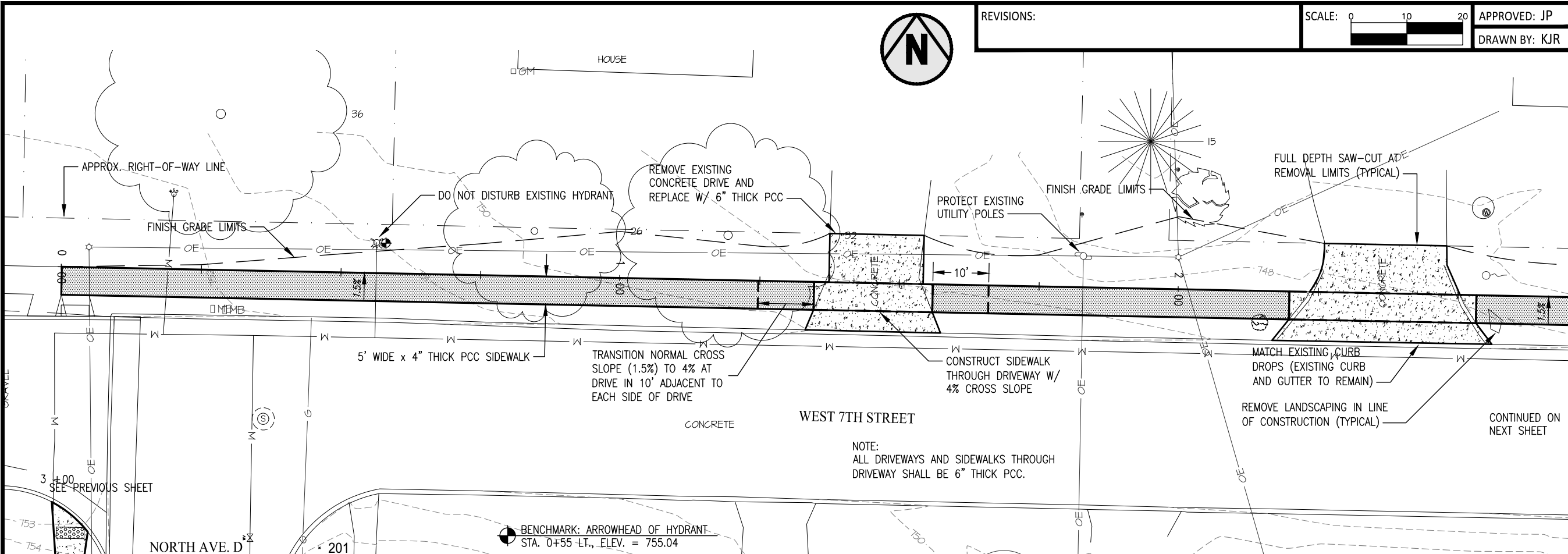
SHEET TITLE
 PLAN AND PROFILE
 NORTH AVE. D

DATE:
 SEP. 15, 2020

PROJECT NO.:
 9020141

SHEET NO.:
D.02

C:\Projects\9020141 - Washington - North D Ave - Sidewalk Investigation\Drafting\Civil_3D Plan Drawings\Cons Plan_9020141.dwg

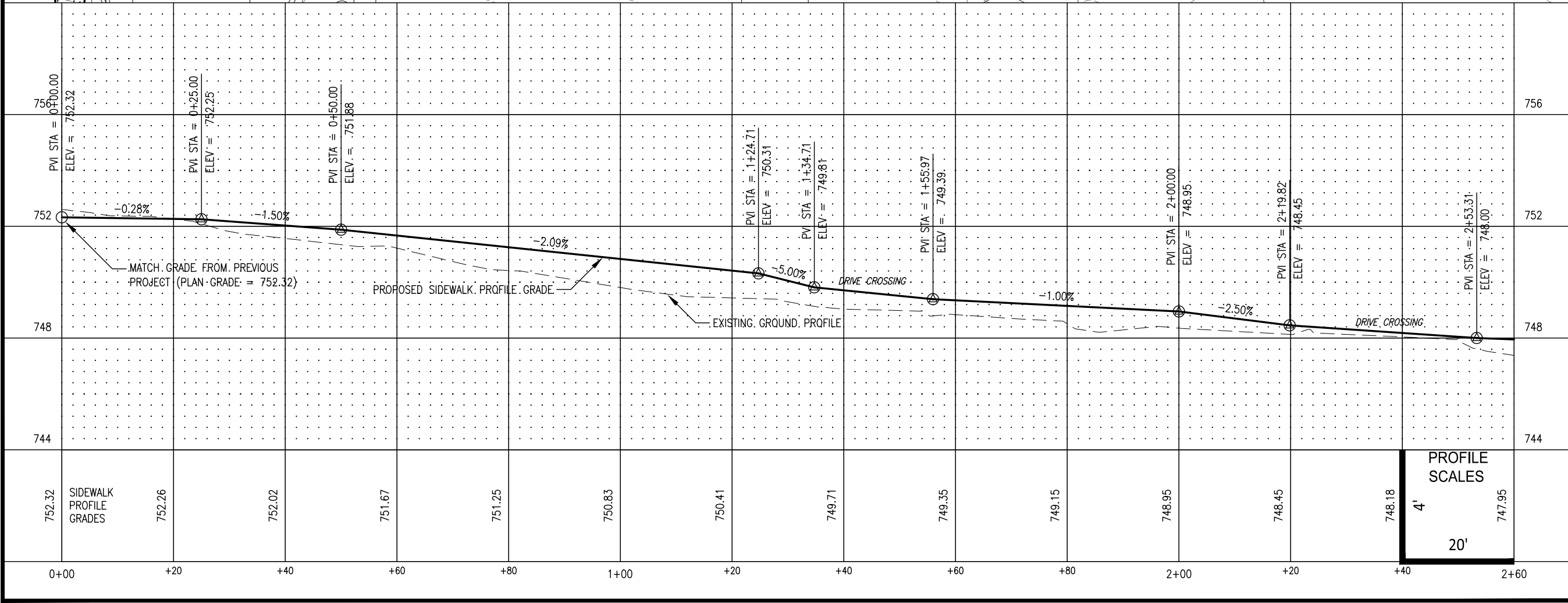


REVISIONS:

SCALE: 0 10 20

APPROVED: JP

DRAWN BY: KJR



GARDEN & ASSOCIATES, LTD.
ENGINEERS & SURVEYORS

1701 3rd Avenue East, Suite 1
 P.O. Box 451
 Oskaloosa, Iowa 52577
 641.782.4005 Phone
 641.782.4118 Fax
 email@gardenassociates.net

800.491.2524 Iowa Toll Free

**WELLNESS PARK ADDITION
 NORTH AVE. D & WEST 7TH ST.
 SIDEWALK IMPROVEMENTS
 WASHINGTON, IOWA**

© COPYRIGHT 2020 GARDEN & ASSOCIATES, LTD.

SHEET TITLE
**PLAN AND PROFILE
 WEST 7TH STREET**

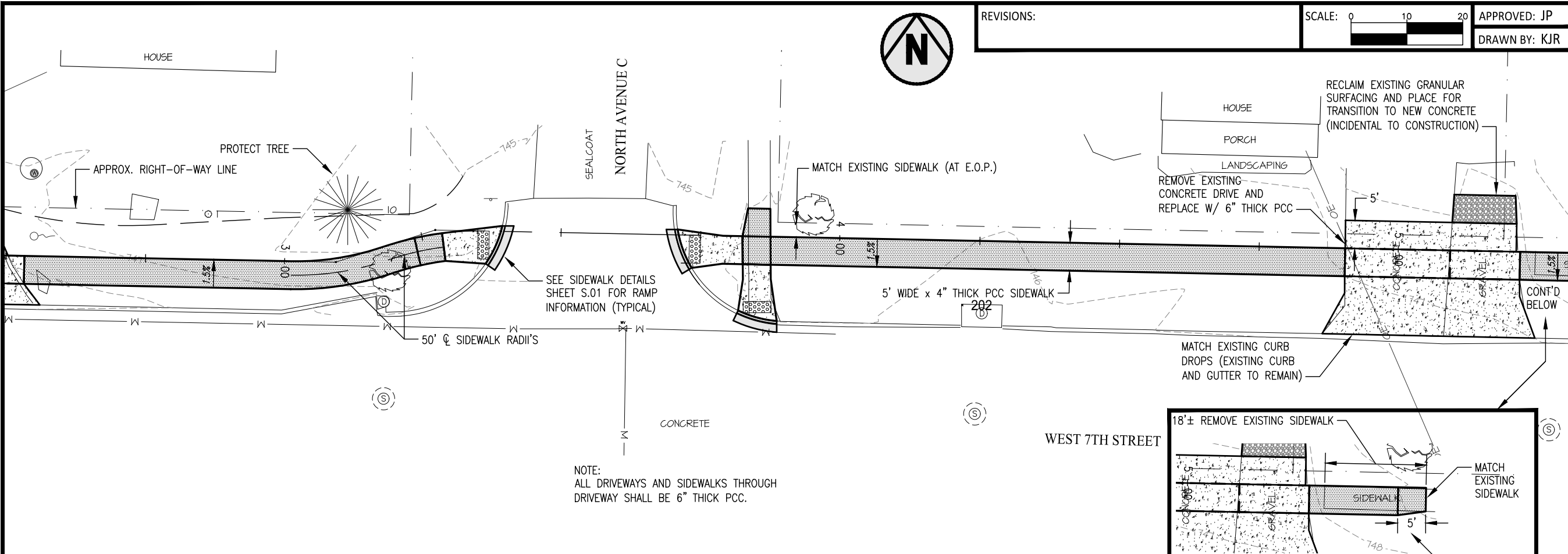
DATE:
 SEP. 15, 2020

PROJECT NO.:
 9020141

SHEET NO.:
D.03

PROFILE
 SCALES
 4'
 20'

C:\Projects\9020141 - Washington - North D Ave - Sidewalk Investigation\Drafting\Civil 3D Plan Drawings\Cons Plan 9020141.dwg

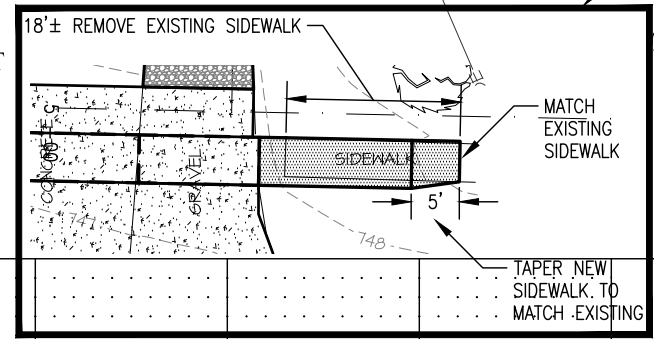
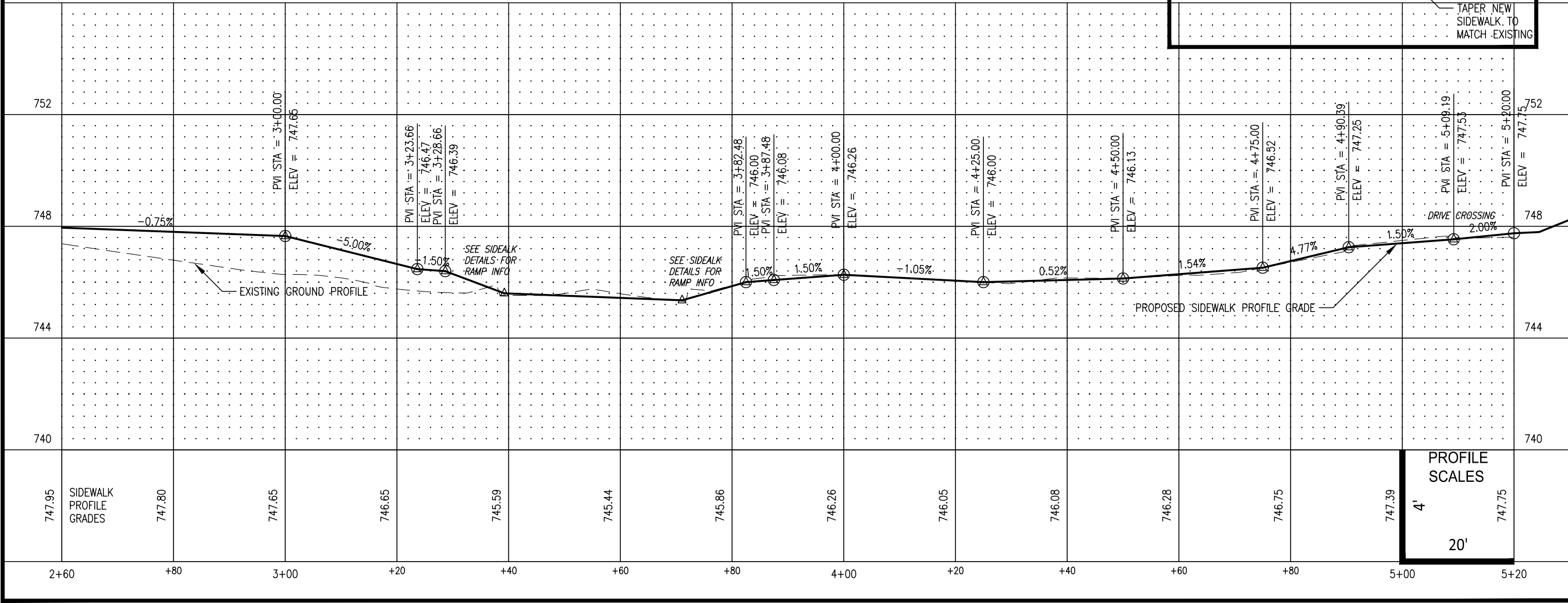


REVISIONS:

SCALE: 0 10 20
APPROVED: JP
DRAWN BY: KJR



NOTE:
ALL DRIVEWAYS AND SIDEWALKS THROUGH DRIVEWAY SHALL BE 6" THICK PCC.



GARDEN & ASSOCIATES, LTD.
ENGINEERS & SURVEYORS

1701 3rd Avenue East, Suite 1
P.O. Box 451
Oskaloosa, Iowa 52577
641.672.2526 Phone
641.672.2091 Fax

500 E. Taylor, Suite C
Creston, Iowa 50801
641.782.4005 Phone
641.782.4118 Fax

800.491.2524 Iowa Toll Free
email@gardenassociates.net

WELLNESS PARK ADDITION
NORTH AVE. D & WEST 7TH ST.
SIDEWALK IMPROVEMENTS
WASHINGTON, IOWA

© COPYRIGHT 2020 GARDEN & ASSOCIATES, LTD.

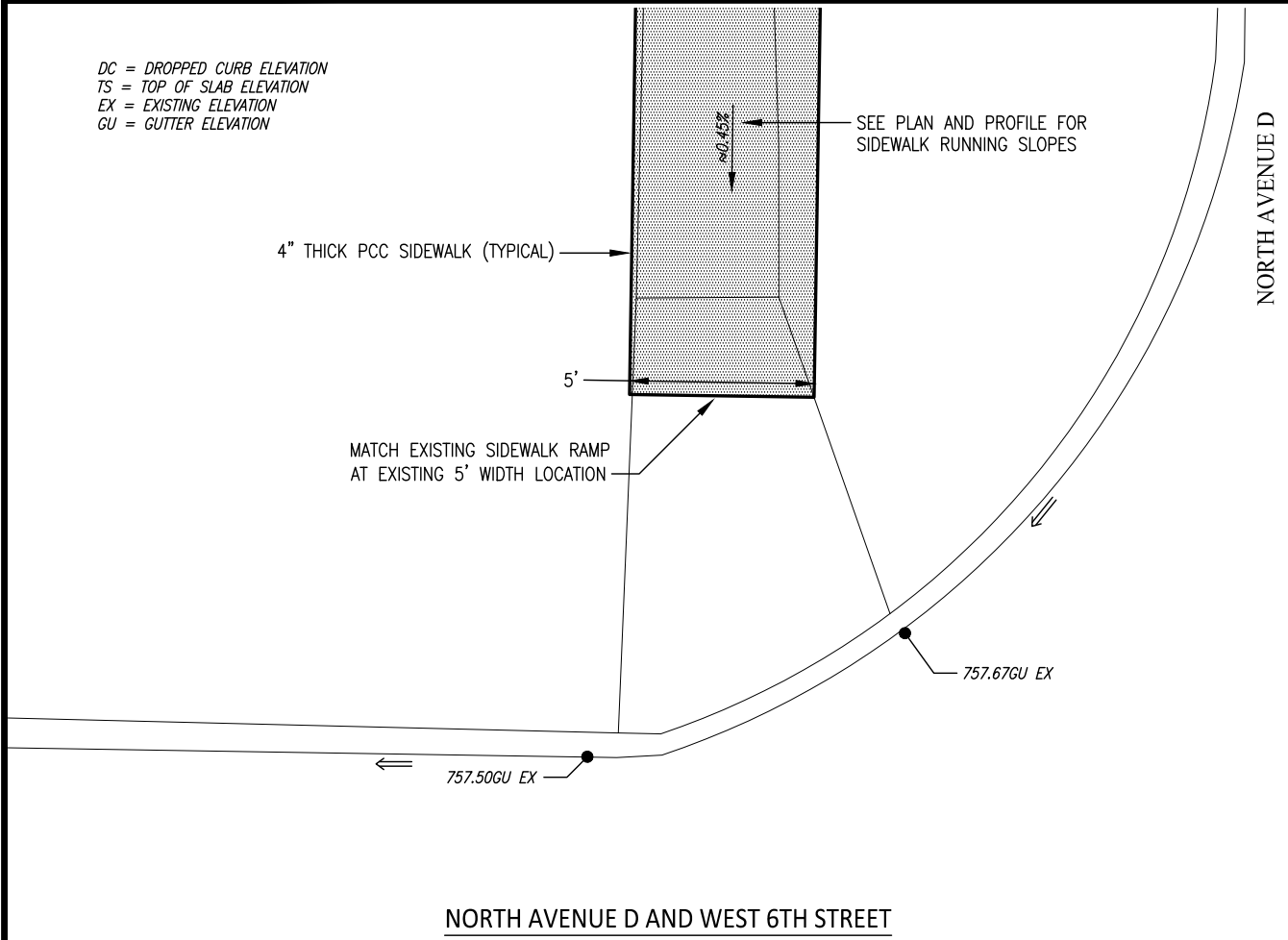
SHEET TITLE
PLAN AND PROFILE
WEST 7TH STREET

DATE:
SEP. 15, 2020

PROJECT NO.:
9020141

SHEET NO.:
D.04

DC = DROPPED CURB ELEVATION
 TS = TOP OF SLAB ELEVATION
 EX = EXISTING ELEVATION
 GU = GUTTER ELEVATION



NORTH AVENUE D AND WEST 6TH STREET

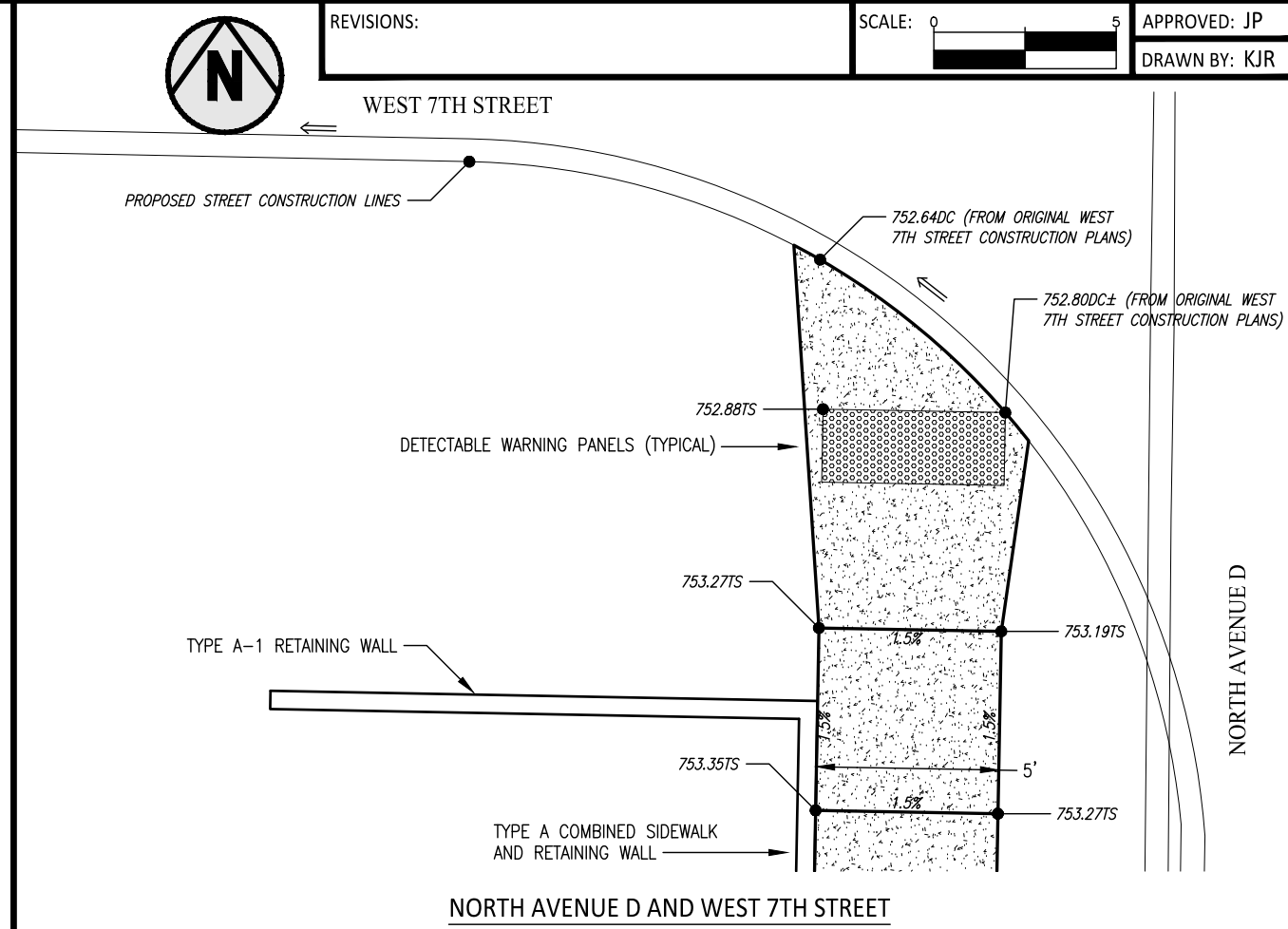


REVISIONS:

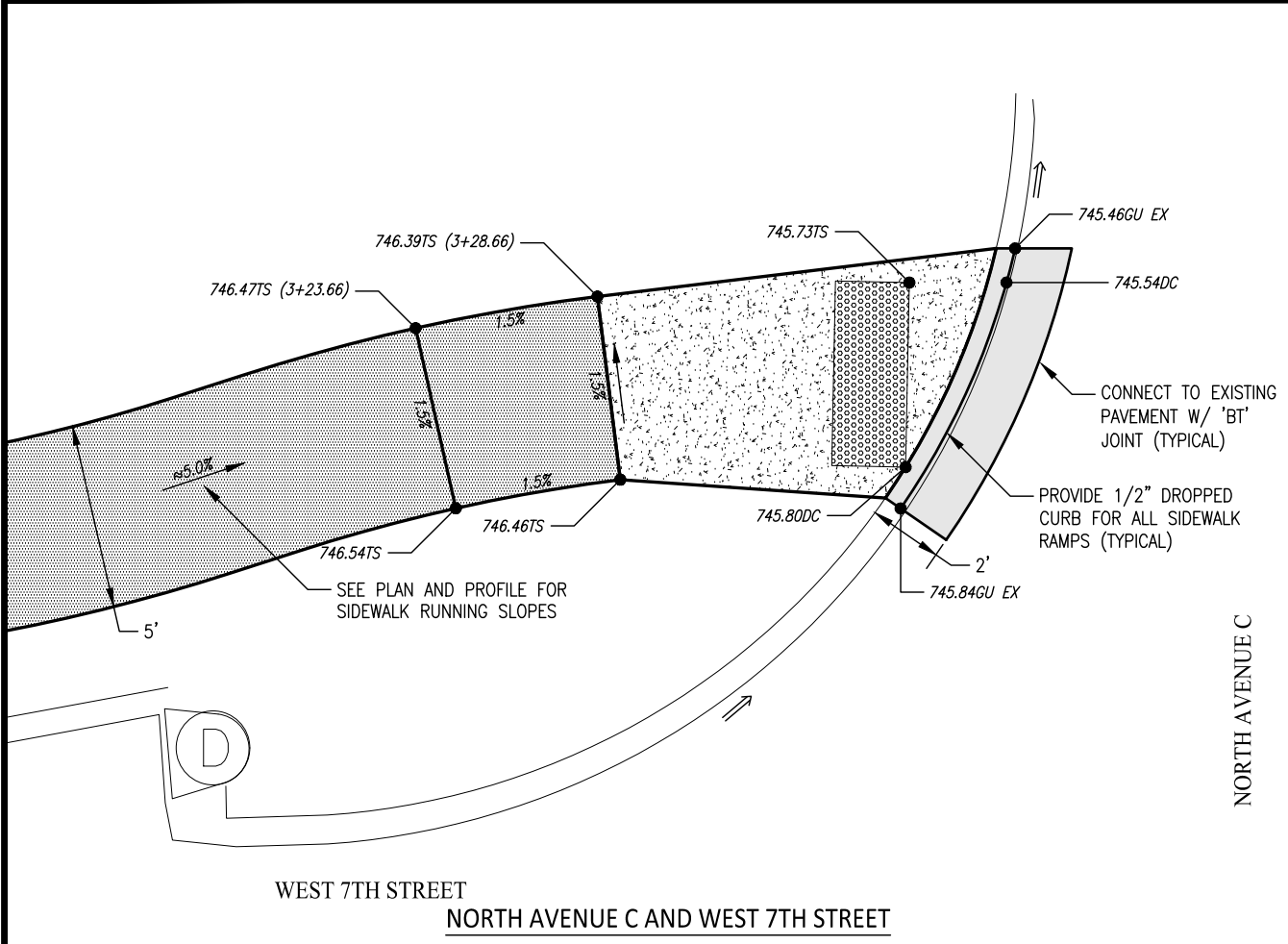


APPROVED: JP

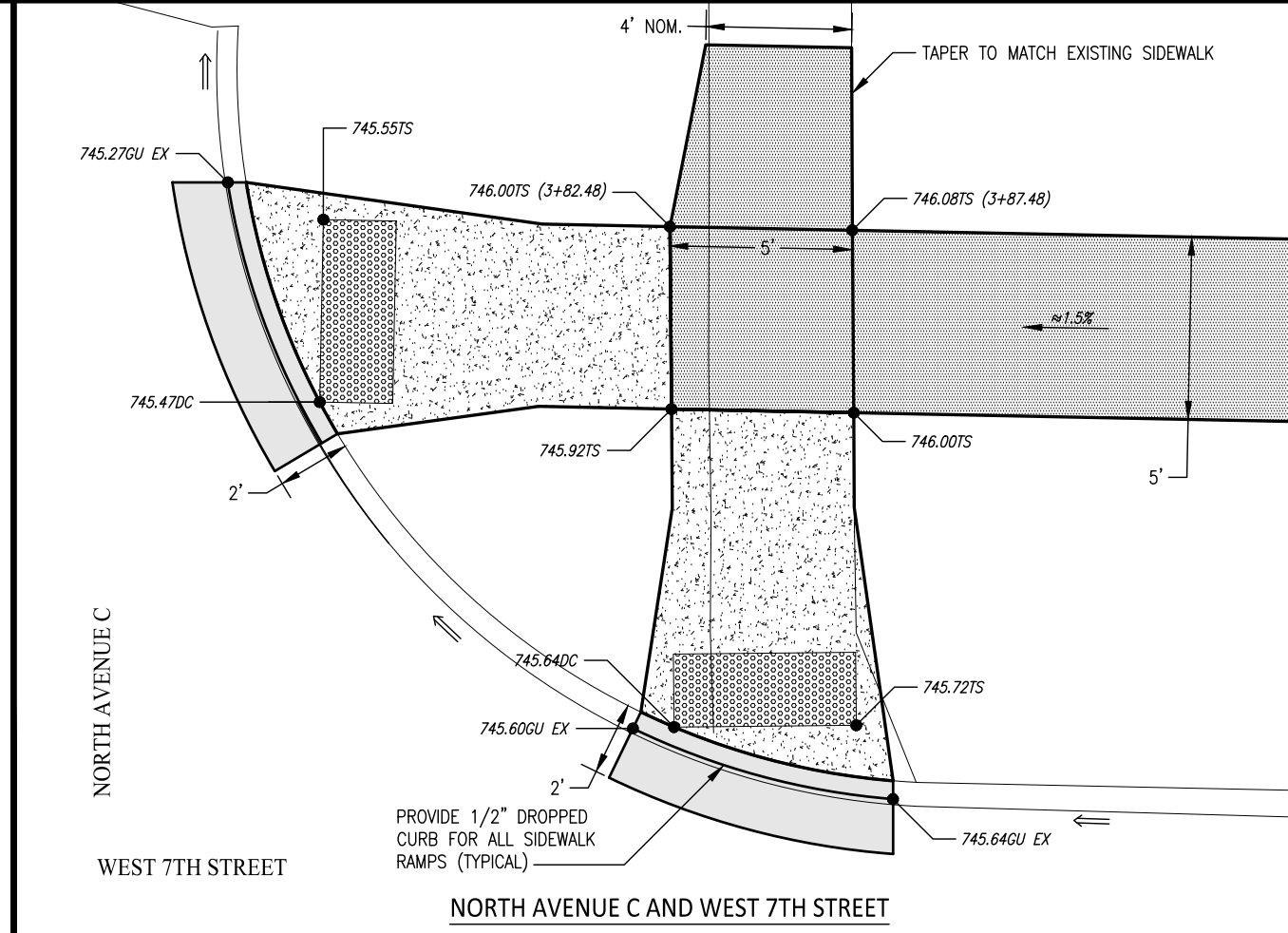
DRAWN BY: KJR



NORTH AVENUE D AND WEST 7TH STREET



NORTH AVENUE C AND WEST 7TH STREET



NORTH AVENUE C AND WEST 7TH STREET

GARDEN & ASSOCIATES, LTD.
ENGINEERS & SURVEYORS
 1701 3rd Avenue East, Suite 1
 P.O. Box 451
 Oskaloosa, Iowa 52577
 641.782.4005 Phone
 641.782.4118 Fax
 email@gardenassociates.net
 800.491.2524 Iowa Toll Free

WELLNESS PARK ADDITION
 NORTH AVE. D & WEST 7TH ST.
 SIDEWALK IMPROVEMENTS
 WASHINGTON, IOWA
 © COPYRIGHT 2020 GARDEN & ASSOCIATES, LTD.

SHEET TITLE
 SIDEWALK DETAILS

DATE:
 SEP. 15, 2020

PROJECT NO.:
 9020141

SHEET NO.:
S.01

C:\Projects\9020141 - Washington - North D Ave - Sidewalk Investigation\Drafting\Civil 3D Plan Drawings\Cons Plan 9020141.dwg

C:\Projects\9020141 - Washington - North D Ave - Sidewalk Investigation\Drafting\Civil 3D Plan Drawings\Cons Plan 9020141.dwg

REVISIONS:

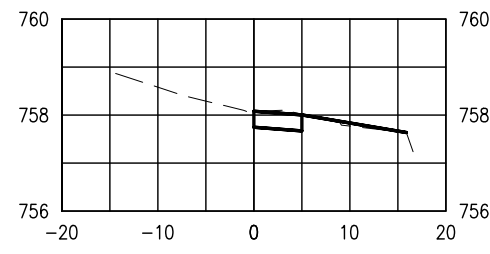
SCALE:

AS NOTED

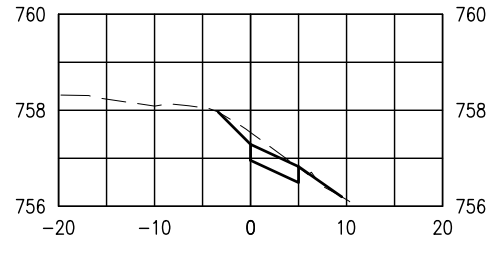
APPROVED: JP

DRAWN BY: KJR

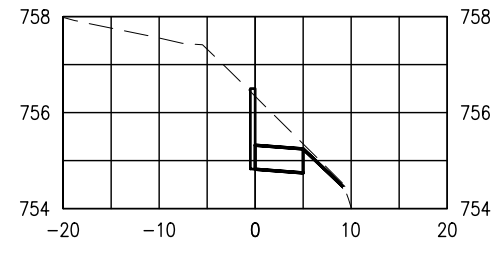
1+00.00



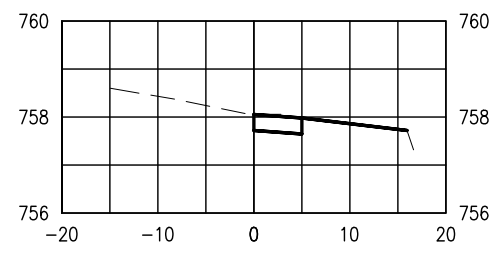
1+75.00



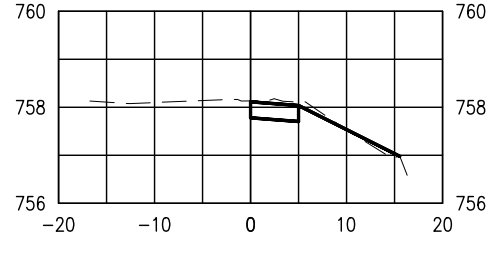
2+50.00



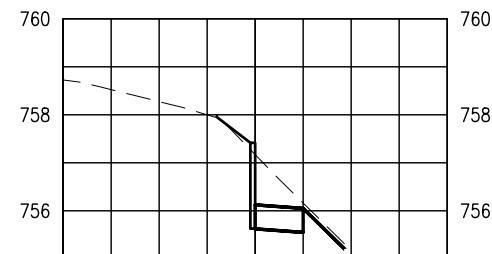
0+89 - Res. Sidewalk Left



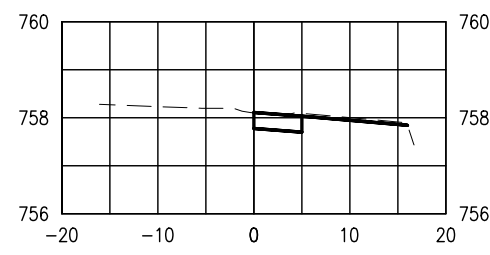
1+50.00



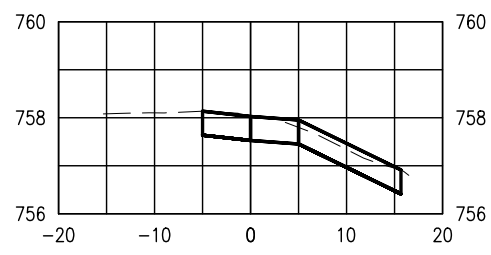
2+25.00



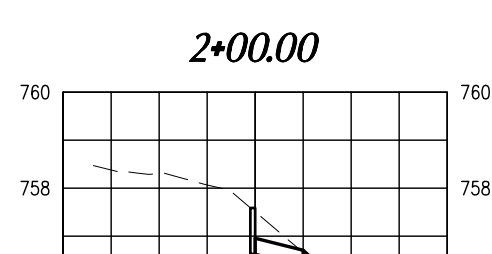
0+75.00



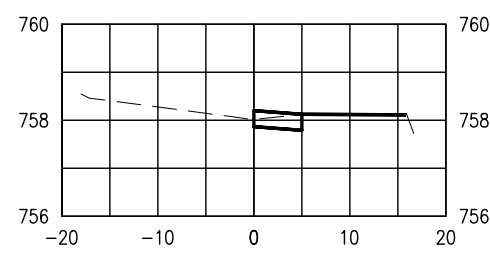
1+35 Driveway



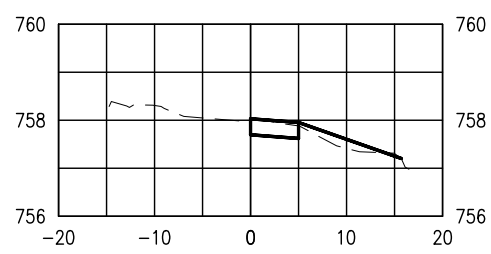
2+00.00



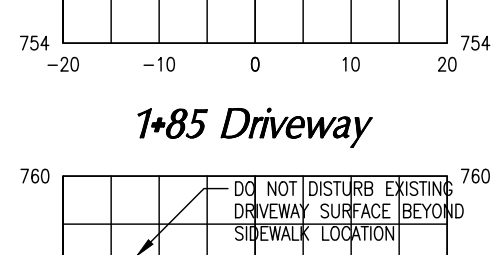
0+50.00



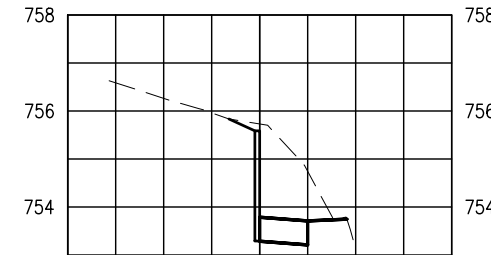
1+25.00



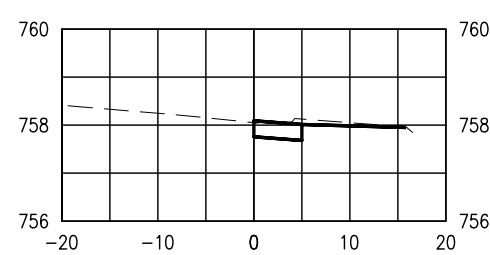
1+85 Driveway



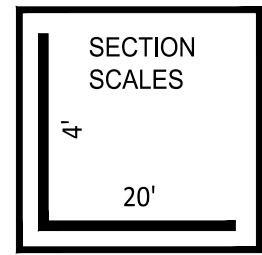
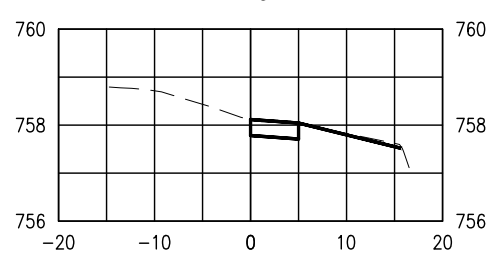
2+75.00



0+25.00



1+14 - Res. Sidewalk Left



GARDEN & ASSOCIATES, LTD.
ENGINEERS & SURVEYORS
 500 E. Taylor, Suite C
 Creston, Iowa 50801
 641.782.4005 Phone
 641.782.4118 Fax
 email@gardenassociates.net

1701 3rd Avenue East, Suite 1
 P.O. Box 451
 Oskaloosa, Iowa 52577
 641.672.2526 Phone
 641.672.2091 Fax
 800.491.2524 Iowa Toll Free

WELLNESS PARK ADDITION
 NORTH AVE. D & WEST 7TH ST.
 SIDEWALK IMPROVEMENTS
 WASHINGTON, IOWA

© COPYRIGHT 2020 GARDEN & ASSOCIATES, LTD.

SHEET TITLE
 CROSS SECTIONS
 NORTH AVE. D

DATE:
 SEP. 15, 2020

PROJECT NO.:
 9020141

SHEET NO.:
 W.01

REVISIONS:

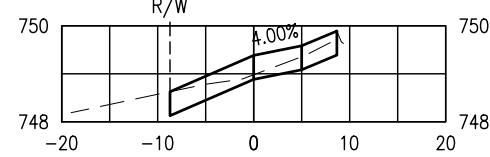
SCALE:

AS NOTED

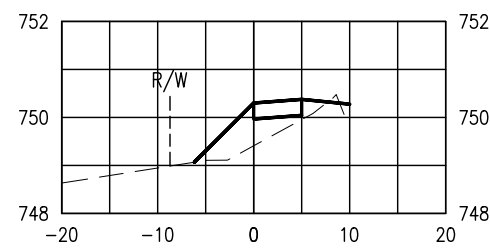
APPROVED: JP

DRAWN BY: KJR

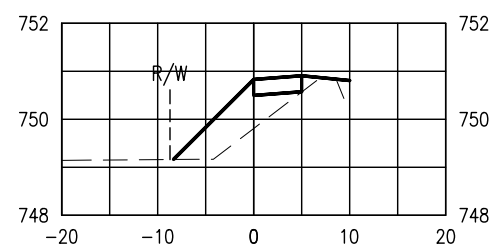
1+50 Driveway



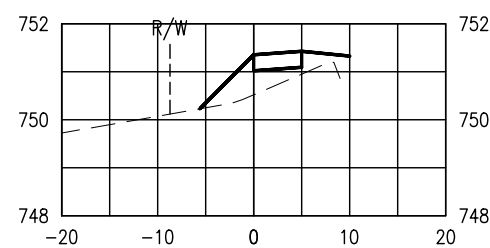
1+25.00



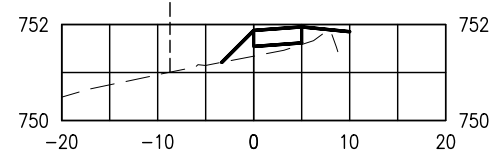
1+00.00



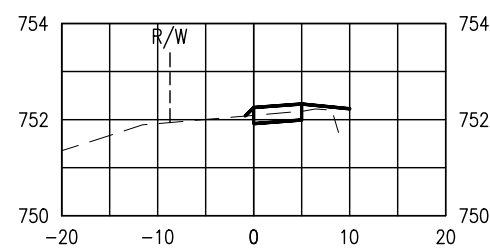
0+75.00



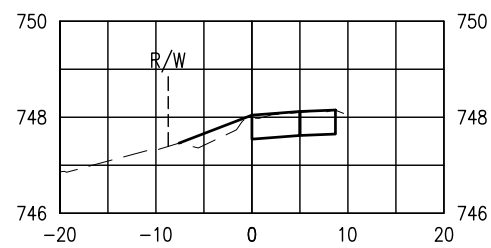
0+50.00



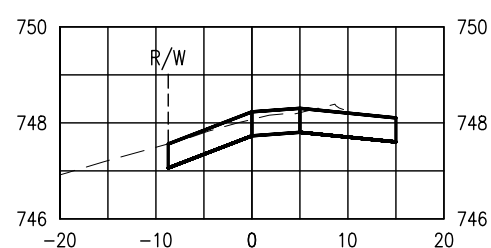
0+25.00



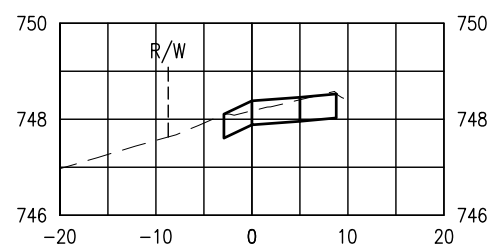
2+50.00



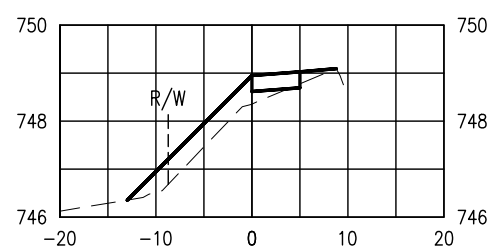
2+36 Driveway



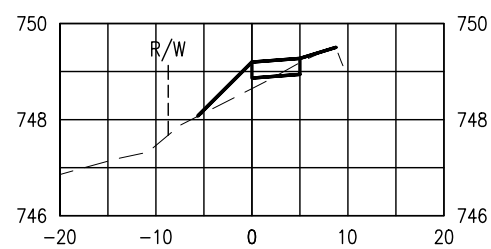
2+25.00



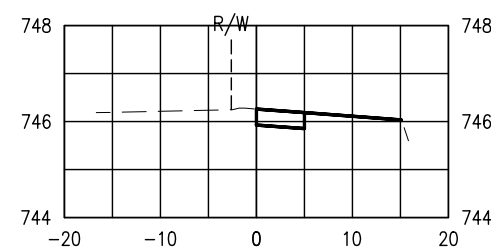
2+00.00



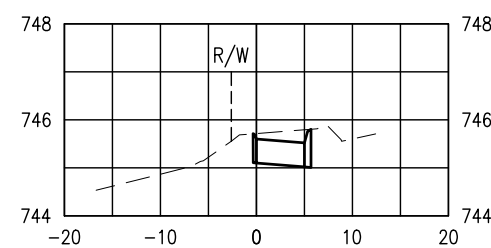
1+75.00



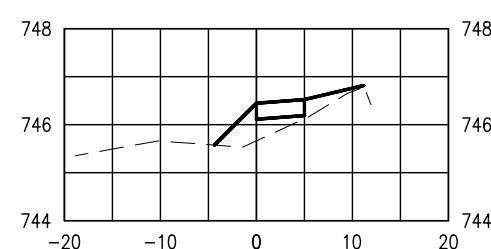
4+00.00



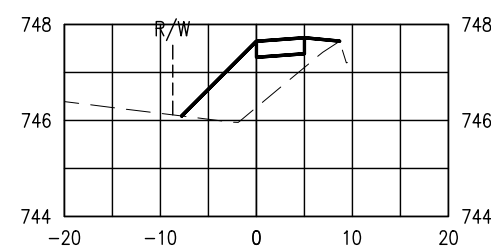
3+75.00



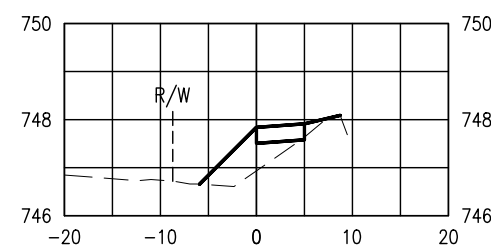
3+25.00



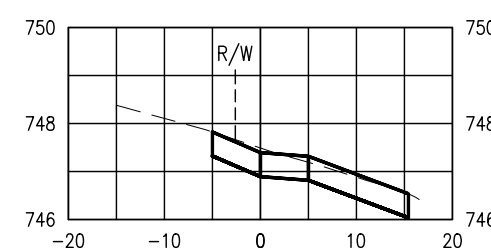
3+00.00



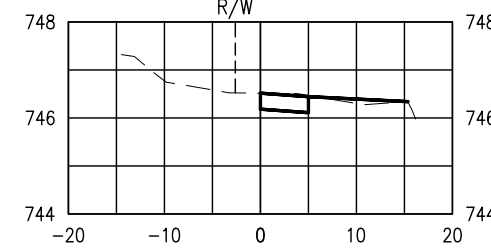
2+75.00



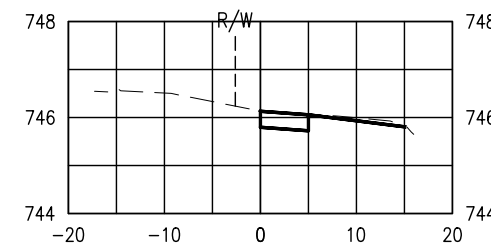
5+00 Driveway



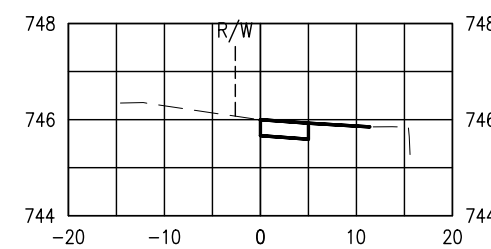
4+75.00



4+50.00



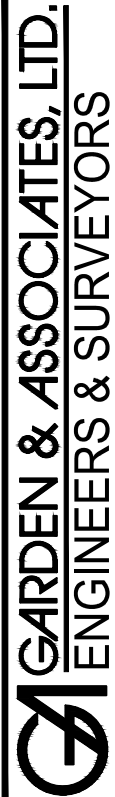
4+25.00



SECTION SCALES

4'

20'



500 E. Taylor, Suite C
Creston, Iowa 50801
641.782.4005 Phone
641.782.4118 Fax

1701 3rd Avenue East, Suite 1
P.O. Box 451
Oskaola, Iowa 52577
641.672.2526 Phone
641.672.2091 Fax

email@gardenassociates.net

800.491.2524 Iowa Toll Free

WELLNESS PARK ADDITION
NORTH AVE. D & WEST 7TH ST.
SIDEWALK IMPROVEMENTS
WASHINGTON, IOWA

© COPYRIGHT 2020 GARDEN & ASSOCIATES, LTD.

SHEET TITLE
CROSS SECTIONS
WEST 7TH STREET

DATE:
SEP. 15, 2020

PROJECT NO.:
9020141

SHEET NO.:
W.02