



AGENDA OF THE REGULAR SESSION OF THE  
COUNCIL OF THE CITY OF WASHINGTON, IOWA  
TO BE HELD IN THE COUNCIL CHAMBERS  
AT 120 E. MAIN STREET  
AT 6:00 P.M., TUESDAY, OCTOBER 6, 2015

**Call to Order**

**Pledge of Allegiance**

**Roll call**

Agenda for the Regular Session to be held at 6:00 P.M., Tuesday, October 6, 2015 to be approved as proposed or amended.

**Consent:**

1. Council Minutes 09-15-2015
2. Council Minutes 09-22-2015
3. V & K, Engineering Services - La Canada Retaining Wall Evaluation, \$920.00
4. V & K, Engineering Services – Sheetz Farm Drainage Calculations, \$460.00
5. V & K, Engineering Services – Country Club Road Widening (Design Services), \$2,700.00
6. V & K, Engineering Services – N. 6<sup>th</sup> Ave. Reconstruction (General Services), \$281.75
7. V & K, Engineering Services – Industrial Park Rise Improvements (Design Services), \$21,127.23
8. V & K, Engineering Services – Sitler Drive Widening (General Services), \$971.75
9. V & K, Engineering Services – Flow Metering (Phase I), \$1,324.35
10. V & K, Engineering Services – W. 3<sup>rd</sup> Street Storm Drainage Study, \$4,106.15
11. V & K, Engineering Services – Court House Sewer Separation (Easements), \$2,500.00
12. IMWCA, Workers Compensation Premium #4, \$9,316.00
13. Snyder & Assoc., Rehabilitate Runway Construction Services, \$3,020.14
14. Public Financial Management, Inc., Professional Services \$2,335,000 GO Capital Loan Notes, Series 2015, \$15,500.61
15. Paws & More Animal Shelter, Animal Services - July-Sept. 2015, \$4,000.00
16. Kevin Olson, Professional Services, \$1,362.84
17. Department Reports

**Consent - Other:**

1. DeLong Construction, S. 12<sup>th</sup>/E. Tyler Street Construction, \$30,460.17
2. Hy-Vee Octoberfest Event (Parking Lot/Garden Center), 528 S. Hwy 1, Special Beer Class B Beer (BB) (Include Wine Coolers), outdoor service area (**new**)
3. G & R Miller Construction, N. 6<sup>th</sup> Avenue Storm Sewer Project, Pay App. #2, \$10,108.00

### **Claims and Financial Reports:**

Claims as Presented.

### **SPECIAL PRESENTATION**

Washington Music Boosters - Haunted Trail Request.

Nuisance Abatement Update.

La Canada Wall Evaluation.

W. 3<sup>rd</sup> Street Storm Sewer Study.

**PRESENTATION FROM THE PUBLIC** - Please limit comments to 3 Minutes.

### **NEW BUSINESS**

### **CONSIDERATION OF HEARINGS, ORDINANCES & RESOLUTIONS**

**Public Hearing** – W. 5<sup>th</sup> Street Parallel Water Main Project.

Discussion and Consideration of a Resolution Adopting Plans, Specifications, Form of Contract and Estimate of Cost for the W. 5<sup>th</sup> Street Parallel Water Main Project.

Discussion and Consideration of a Resolution Awarding Contract for the W. 5<sup>th</sup> Street Parallel Water Main Project.

Discussion and Consideration of a Resolution Approving Urban Renewal Joint Agreement with Washington County Related to the Establishment of the Washington County Hospital Urban Renewal Area.

Discussion and Consideration of a Resolution for Street Lighting – McCreedy Drive.

Discussion and Consideration of a Resolution Authorizing Levy, Assessment, and Collection of Costs to the Washington County Treasurer.

Discussion and Consideration of Second Reading of an Ordinance Allowing Partial Residential Use of the Ground Floors of Buildings in a B-1 Central Business District.

Discussion and Consideration of Third Reading of an Ordinance Establishing Smoke Free Places.

Discussion and Consideration of Third Reading of an Ordinance Creating a New “A-2” Agricultural Zoning Classification.

### **DEPARTMENTAL REPORT**

Police Department

City Administrator

City Attorney

### **MAYOR & COUNCILPERSONS**

Sandra Johnson, Mayor

Mark Kendall

Jaron Rosien

Kathryn Salazar

Bob Shellmyer  
Bob Shepherd  
Russ Zieglowsky

**ADJOURNMENT**

Illa Earnest, City Clerk

Council Minutes 09-15-2015

The Council of the City of Washington, Iowa, met in the council chambers, 120 E. Main Street, at 6:00 P.M., Tuesday, September 15, 2015. Mayor Johnson in the chair. On roll call present: Kendall, Rosien, Salazar, Shellmyer, Shepherd, Zieglowsky. Absent: none.

Motion by Rosien, seconded by Salazar, that the agenda for the Regular Session to be held at 6:00 P.M., Tuesday, September 15, 2015 be approved as proposed. "No" vote by Shellmyer and Shepherd. Motion carried.

**Consent:**

1. Council Minutes 09-01-2015
2. Ahlers & Cooney P.C., Series 2015 General Obligation Loan Notes, Professional Services, \$7,522.61
3. Spark Consulting, West Side Neighborhood Survey, \$3,607.83
4. Fox Engineering, W. 5<sup>th</sup> Street Parallel Water Main, \$11,149.45
5. Fox Engineering, Lexington Blvd. Wastewater Pump Station Improvements, \$1,785.00
6. Fox Engineering, Elevated Water Storage Tank, \$24,601.14
7. Fox Engineering, Ground Storage Reservoir, \$1,072.00
8. Fox Engineering, Reverse Osmosis Pilot Study, \$643.32
9. Terracon, Elevated Water Storage Tank, \$4,536.00
10. Caldwell Tanks, Inc., Elevated Water Storage Tank, \$178,134.50
11. Preservation Resources, Inc., Two Part Windows Workshop, \$10,348.00
12. Smokin Joe's Tobacco & Liquor Outlet #9, 304 W. Madison St., Class B Wine, Class C Beer Permit (carryout beer), Class E Liquor License (LE), Sunday Sales, **(renew)**
13. Pizza Hut of Washington, 1018 W. Madison St., Special Class C Liquor (BW) (Beer/Wine)
14. Department Reports

Motion by Kendall, seconded by Rosien, to approve consent agenda items 1-14. Motion carried.

**Other:**

DeLong Construction, Sitler Widening Project, \$268,860.27

Greiner Building, Inc., Airport Hangar Door Delivered and Installed – ½ down payment due, \$12,790.00

Motion by Rosien, seconded by Salazar, to approve the payments to DeLong Construction and Greiner Buildings. Kendall abstained with conflict. Motion carried.

Motion by Kendall, seconded by Shepherd, to approve payment of claims except those for Hy-Vee. Motion carried.

Motion by Kendall, seconded by Salazar, to approve payment of claims for Hy-Vee. Zieglowsky abstained with conflict. Motion carried.

Financial Director Kelsey Brown gave the financial reports for August. Motion by Rosien, seconded by Kendall, to accept the financial reports. Motion carried.



Paul Towner representing the Washington Municipal Band gave the annual report of the band's activities this year and plans for the coming year.

Motion by Rosien, seconded by Shepherd, to approve the requests from Relay for Life for the Halloween Walk on October 24, 2015 and use of the Square and Central Park for Relay for Life June 18, 2016. Motion carried.

Motion by Kendall, seconded by Rosien, to approve the request for use of the Square and Central Park for the Paws and More Central Park Car Show on August 21, 2016. Motion carried.

Motion by Rosien, seconded by Kendall, to approve the rain date for the Lincoln School Bike-a-thon for September 25. Motion carried.

Building and Zoning Official Steve Donnolly gave council an update on rental inspections.

Danielle Pettit Majewski, Public Health Administrator, came before council to give a brief update on the proposed new public health building project.

Bids for the New Brush Truck:

<u>Chassis</u>	<u>Vendor</u>	<u>Price</u>
2016 Ford F-550	Charles Capper Auto Center	\$43,014.00
2016 Ford F-550	Heiman Fire Equipment	\$46,029.00
2016 Ford F-550	Midwest Fire	\$46,793.00

Brush Truck Fire Body

Brush Truck Body	Heiman Fire Equipment	\$99,751.00
Brush Truck Body	Midwest Fire	\$94,264.00

Motion by Kendall, seconded by Rosien, to approve purchase of the chassis from Charles Capper Auto Center for \$43,014.00. Motion carried. "No" vote by Shellmyer and Zieglowsky.

Motion by Rosien, seconded by Salazar, to approve the purchase as recommended by Fire Chief Tom Wide of the brush truck body from Heiman Fire Equipment for \$99,751.00. Motion carried. "No" vote by Shellmyer and Zieglowsky.

Motion by Rosien, seconded by Kendall, to move consideration of the Engineering Task Order with Fox Engineering for the Southeast Sanitary Sewer Examination before discussion of Manhole Inspection Software. Motion carried.

After discussion, motion by Rosien, seconded by Shepherd, to approve the Task Order for the basic services less the manhole observation. Motion carried.

Motion by Rosien, seconded by Salazar, to approve purchase of the Manhole Inspection Software (PipeTech Mobile) from Peninsular Technologies for \$5,094.99. Motion carried.

Bid Received for Southeast Sanitary Sewer Cleaning:

Hydro Klean	\$48,500.00
-------------	-------------

Motion by Kendall, seconded by Shepherd, to approve the proposal from Hydro Klean for the Southeast Sanitary Sewer Cleaning of 50,000 feet in the amount of \$48,500.00. Motion carried.

Motion by Kendall, seconded by Shepherd, to approve the Resolution Endorsing Park Board Application to the Riverboat Foundation for Grant Funds for the Central Park Fountain Project. Roll call on motion: Ayes: Kendall, Rosien, Salazar, Shellmyer, Shepherd, Ziegłowsky. Nays: none. Motion carried. **(Resolution No. 2015-083)**

Motion by Shellmyer, seconded by Salazar, to approve the Resolution Endorsing Washington Municipal Band Application to the Riverboat Foundation for Grant Funds for Chimes. Roll call on motion: Ayes: Kendall, Rosien, Salazar, Shellmyer, Shepherd, Ziegłowsky. Nays: none. Motion carried. **(Resolution No. 2015-084)**

Motion by Rosien, seconded by Kendall, to approve the Resolution Approving a Revised Memorandum of Understanding for the Income Offset Program. Roll call on motion: Ayes: Kendall, Rosien, Salazar, Shellmyer, Shepherd, Ziegłowsky. Nays: none. Motion carried. **(Resolution No. 2015-085)**

Motion by Rosien, seconded by Kendall, to approve the Resolution Establishing a Stop Sign and Speed Zone Request Policy as amended to add "council members may bring such matters forward". Roll call on motion: Ayes: Kendall, Rosien, Salazar, Shellmyer, Shepherd, Ziegłowsky. Nays: none. Motion carried. **(Resolution No. 2015-086)**

Motion by Kendall, seconded by Shepherd, to approve the first reading of an Ordinance Allowing Partial Residential Use of the Ground Floors of Buildings in a B-1 Central Business District. Roll call on motion: Ayes: Kendall, Rosien, Salazar, Shepherd, Ziegłowsky. Nays: Shellmyer. Motion carried.

Motion by Kendall, seconded by Shepherd, to approve the second reading of an Ordinance Establishing Smoke-Free Places. Roll call on motion: Ayes: Kendall, Rosien, Salazar, Shellmyer, Shepherd, Ziegłowsky. Nays: none. Motion carried.

Motion by Rosien, seconded by Kendall, to approve the second reading of an Ordinance Creating a New A-2 Agricultural Zoning Classification. Roll call on motion: Ayes: Kendall, Rosien, Salazar, Shellmyer, Shepherd, Ziegłowsky. Nays: none. Motion carried.

Motion by Rosien, seconded by Kendall, to remove from the table Discussion and Consideration of a Resolution Approving Permanent Easement Agreements with Property Owners for the Court House Sewer Separation Project tabled 09-01-2015. Roll call on motion: Ayes: Kendall, Rosien, Salazar, Shellmyer, Shepherd, Ziegłowsky. Nays: none. Motion carried.

Motion by Kendall, seconded by Rosien, to approve the Resolution Approving Permanent Easement Agreements with Property Owners for the Court House Sewer Separation Project. Roll call on motion: Ayes: Kendall, Rosien, Salazar, Shellmyer, Shepherd, Ziegłowsky. Nays: none. Motion carried. **(Resolution No. 2015-087)**

Motion by Shepherd, seconded by Ziegłowsky, that the Regular Session held at 6:00 P.M., Tuesday, September 15, 2015 be adjourned. Motion carried.

Illa Earnest, City Clerk

Sandra Johnson, Mayor

Council Minutes 09-22-2015

The Council of the City of Washington, Iowa, met in Special/Work Session in the Nicola-Stoufer Room, Washington Public Library, 115 W. Washington Street, at 6:00 P.M., Tuesday, September 22, 2015. Mayor Johnson in the chair. On roll call present: Kendall, Salazar, Shellmyer (by Skype), Shepherd, Ziegłowsky. Absent: Rosien.

Motion by Kendall, seconded by Shepherd, that the agenda for the Special/Work Session to be held at 6:00 P.M., Tuesday, September 22, 2015 be approved as proposed. Motion carried.

Presentations from the Public:

Richard Gilmore, owner of a business on the Square with residences on the upper floors, came before council to ask where his renters should park their cars during snow events.

Eric Turner representing the Movement Mayhem Event (a fund raiser for the future Wellness Park) which will be held at Marr Park at 8:00 A.M. on October 3 came to invite council to the event.

Motion by Kendall, seconded by Shepherd, to approve the Resolution Endorsing the Operations and Advisory Committee – Washington Performing Arts and Event Center. Roll call on motion: Ayes: Kendall, Salazar, Shellmyer, Shepherd, Ziegłowsky. Nays: none. Motion carried. **(Resolution No. 2015-088)**

After discussion, motion by Salazar, seconded by Kendall, to direct the City Administrator and the City Attorney to put together a proposed ordinance that formulates snow policy which includes as first priority streets – no parking; second and third priority streets – odd/even side parking based on every other day; look into use of private parking lots around downtown; and consider raising the price of parking tickets. Motion carried.

Motion by Kendall, seconded by Shepherd, to approve the Right-of-Way Services Agreement for the Highway 1 S. Water Main Project. Motion carried.

Motion by Kendall, seconded by Ziegłowsky, that the Special/Work Session held at 6:00 P.M., Tuesday, September 22, 2015 be adjourned. Motion carried.

Illa Earnest, City Clerk

Sandra Johnson, Mayor



# VEENSTRA & KIMM, INC.

3000 Westown Parkway • West Des Moines, Iowa 50266-1320

515-225-8000 • 515-225-7848 (FAX) • 800-241-8000 (WATS)

## STATEMENT OF PROFESSIONAL SERVICES

City of Washington  
215 East Washington  
P.O. Box 516  
Washington, IA 52353

September 25, 2015

Project No: 24616-026

Invoice No: 1

Project Manager Leland Belding III

Engineering services for La Canada Retaining Wall Evaluation:

### Professional Services from August 16, 2015 to September 19, 2015

#### Professional Personnel

	Hours	Rate	Amount	
Engineer III-A	8.00	115.00	920.00	
Totals	8.00		920.00	
Total Labor				920.00
		Total this Invoice		\$920.00



# VEENSTRA & KIMM, INC.

3000 Westown Parkway • West Des Moines, Iowa 50266-1320

515-225-8000 • 515-225-7848 (FAX) • 800-241-8000 (WATS)

## STATEMENT OF PROFESSIONAL SERVICES

City of Washington  
215 East Washington  
P.O. Box 516  
Washington, IA 52353

September 25, 2015  
Project No: 24616-027  
Invoice No: 1

Project Manager Leland Belding III

Engineering services for Sheetz Farm Drainage Calculations:

### Professional Services from August 16, 2015 to September 19, 2015

#### **Professional Personnel**

	<b>Hours</b>	<b>Rate</b>	<b>Amount</b>	
Engineer III-A	4.00	115.00	460.00	
Totals	4.00		460.00	
<b>Total Labor</b>				<b>460.00</b>
		<b>Total this Invoice</b>		<b>\$460.00</b>



# VEENSTRA & KIMM, INC.

3000 Westown Parkway • West Des Moines, Iowa 50266-1320

515-225-8000 • 515-225-7848 (FAX) • 800-241-8000 (WATS)

## STATEMENT OF PROFESSIONAL SERVICES

City of Washington  
215 East Washington  
P.O. Box 516  
Washington, IA 52353

September 25, 2015  
Project No: 24635  
Invoice No: 7

Project Manager Leland Belding III

Engineering services for Country Club Road Widening - Design Services:

### Professional Services from August 16, 2015 to September 19, 2015

#### Fee

Total Fee	11,000.00		
Percent Complete	70.00	Total Earned	7,700.00
		Previous Fee Billing	5,000.00
		Current Fee Billing	2,700.00
		<b>Total Fee</b>	<b>2,700.00</b>
		<b>Total this Invoice</b>	<b>\$2,700.00</b>

#### Billings to Date

	Current	Prior	Total
Fee	2,700.00	5,000.00	7,700.00
<b>Totals</b>	<b>2,700.00</b>	<b>5,000.00</b>	<b>7,700.00</b>



# VEENSTRA & KIMM, INC.

3000 Westown Parkway • West Des Moines, Iowa 50266-1320

515-225-8000 • 515-225-7848 (FAX) • 800-241-8000 (WATS)

## STATEMENT OF PROFESSIONAL SERVICES

City of Washington  
215 East Washington  
P.O. Box 516  
Washington, IA 52353

September 25, 2015  
Project No: 24643  
Invoice No: 2

Project Manager Leland Belding III

Engineering services for North 6th Avenue Reconstruction - General Services:

### Professional Services from August 16, 2015 to September 19, 2015

#### Professional Personnel

	Hours	Rate	Amount
Engineer III-A	2.00	115.00	230.00
Totals	2.00		230.00
<b>Total Labor</b>			<b>230.00</b>

#### Reimbursable Expenses

Travel			51.75
<b>Total Reimbursables</b>			<b>51.75</b>

#### Billing Limits

	Current	Prior	To-Date
Total Billings	281.75	1,015.30	1,297.05
Limit			1,800.00
Remaining			502.95

**Total this Invoice \$281.75**

#### Billings to Date

	Current	Prior	Total
Labor	230.00	1,011.00	1,241.00
Expense	51.75	0.00	51.75
Unit	0.00	4.30	4.30
<b>Totals</b>	<b>281.75</b>	<b>1,015.30</b>	<b>1,297.05</b>





# VEENSTRA & KIMM, INC.

3000 Westown Parkway • West Des Moines, Iowa 50266-1320

515-225-8000 • 515-225-7848 (FAX) • 800-241-8000 (WATS)

## STATEMENT OF PROFESSIONAL SERVICES

City of Washington  
215 East Washington  
P.O. Box 516  
Washington, IA 52353

September 25, 2015  
Project No: 24644  
Invoice No: 8

Project Manager Leland Belding III

Engineering services for Industrial Park Rise Improvements - Design Services:

### Professional Services from August 16, 2015 to September 19, 2015

#### Professional Personnel

	Hours	Rate	Amount	
Clerical III	7.00	41.00	287.00	
Engineer I-C	18.00	142.00	2,556.00	
Engineer III-A	65.00	115.00	7,475.00	
Engineer IV	6.00	100.00	600.00	
Engineer XI	69.50	63.00	4,378.50	
Drafter IV	9.00	66.00	594.00	
Technician III	74.00	67.00	4,958.00	
Totals	248.50		20,848.50	
<b>Total Labor</b>				<b>20,848.50</b>

#### Reimbursable Expenses

Travel			129.38	
<b>Total Reimbursables</b>			<b>129.38</b>	<b>129.38</b>

#### Unit Billing

Duplication-8.5 X11 Color			116.45	
Duplication			32.90	
<b>Total Units</b>			<b>149.35</b>	<b>149.35</b>

#### Billing Limits

	Current	Prior	To-Date
Total Billings	21,127.23	107,973.76	129,100.99
Limit			190,000.00
Remaining			60,899.01

**Total this Invoice \$21,127.23**

#### Billings to Date

	Current	Prior	Total
Labor	20,848.50	105,245.50	126,094.00
Expense	129.38	537.56	666.94
Unit	149.35	2,190.70	2,340.05
<b>Totals</b>	<b>21,127.23</b>	<b>107,973.76</b>	<b>129,100.99</b>



# VEENSTRA & KIMM, INC.

3000 Westown Parkway • West Des Moines, Iowa 50266-1320

515-225-8000 • 515-225-7848 (FAX) • 800-241-8000 (WATS)

## STATEMENT OF PROFESSIONAL SERVICES

City of Washington  
215 East Washington  
P.O. Box 516  
Washington, IA 52353

September 25, 2015

Project No: 24647

Invoice No: 4

Project Manager Leland Belding III

Engineering services for Sitler Drive Widening - General Services:

### Professional Services from August 16, 2015 to September 19, 2015

#### Professional Personnel

	Hours	Rate	Amount	
Engineer III-A	8.00	115.00	920.00	
Totals	8.00		920.00	
Total Labor				920.00

#### Reimbursable Expenses

Travel			51.75	
Total Reimbursables			51.75	51.75

#### Billing Limits

	Current	Prior	To-Date	
Total Billings	971.75	3,612.60	4,584.35	
Limit			5,000.00	
Remaining			415.65	
Total this Invoice				\$971.75

#### Billings to Date

	Current	Prior	Total
Labor	920.00	3,115.00	4,035.00
Expense	51.75	207.00	258.75
Unit	0.00	290.60	290.60
Totals	971.75	3,612.60	4,584.35



# VEENSTRA & KIMM, INC.

3000 Westown Parkway • West Des Moines, Iowa 50266-1320

515-225-8000 • 515-225-7848 (FAX) • 800-241-8000 (WATS)

## STATEMENT OF PROFESSIONAL SERVICES

City of Washington  
215 East Washington  
P.O. Box 516  
Washington, IA 52353

September 25, 2015

Project No: 24648

Invoice No: 8

Project Manager Leland Belding III

Engineering services for Flow Metering - Phase 1:

### Professional Services from August 16, 2015 to September 19, 2015

#### **Professional Personnel**

	<b>Hours</b>	<b>Rate</b>	<b>Amount</b>	
Engineer IX	9.50	74.00	703.00	
Engineer XI	5.00	63.00	315.00	
Drafter IV	2.50	66.00	165.00	
Totals	17.00		1,183.00	
<b>Total Labor</b>				<b>1,183.00</b>

#### **Unit Billing**

Duplication		16.40	
Duplication-8.5 X11 Color		124.95	
<b>Total Units</b>		<b>141.35</b>	<b>141.35</b>

**Total this Invoice \$1,324.35**



# VEENSTRA & KIMM, INC.

3000 Westown Parkway • West Des Moines, Iowa 50266-1320

515-225-8000 • 515-225-7848 (FAX) • 800-241-8000 (WATS)

## STATEMENT OF PROFESSIONAL SERVICES

City of Washington  
215 East Washington  
P.O. Box 516  
Washington, IA 52353

September 25, 2015  
Project No: 24651  
Invoice No: 4

Project Manager Leland Belding III

Engineering services for West 3rd Street Storm Drainage Study:

### Professional Services from August 16, 2015 to September 19, 2015

#### Professional Personnel

	Hours	Rate	Amount	
Clerical III	4.00	41.00	164.00	
Engineer III-A	15.00	115.00	1,725.00	
Engineer IV	1.00	100.00	100.00	
Engineer XI	3.50	63.00	220.50	
Drafter IV	9.50	66.00	627.00	
Technician III	17.00	67.00	1,139.00	
Totals	50.00		3,975.50	
Total Labor				3,975.50

#### Unit Billing

Duplication			10.80	
Duplication-8.5 X11 Color			119.85	
Total Units			130.65	130.65

#### Billing Limits

	Current	Prior	To-Date	
Total Billings	4,106.15	3,948.25	8,054.40	
Limit			12,000.00	
Remaining			3,945.60	
Total this Invoice				\$4,106.15

#### Billings to Date

	Current	Prior	Total
Labor	3,975.50	3,879.50	7,855.00
Unit	130.65	68.75	199.40
Totals	4,106.15	3,948.25	8,054.40



# VEENSTRA & KIMM, INC.

3000 Westown Parkway • West Des Moines, Iowa 50266-1320

515-225-8000 • 515-225-7848 (FAX) • 800-241-8000 (WATS)

## STATEMENT OF PROFESSIONAL SERVICES

City of Washington  
215 East Washington  
P.O. Box 516  
Washington, IA 52353

September 25, 2015

Project No: 24652

Invoice No: 1

Project Manager Leland Belding III

Engineering services for Court House Sewer Separation - Easements:

### Professional Services from August 16, 2015 to September 19, 2015

#### Professional Personnel

	Hours	Rate	Amount
Engineer III-A	8.00	115.00	920.00
Engineer IV	4.00	100.00	400.00
Drafter IV	4.00	66.00	264.00
Surveyor II	8.00	81.00	648.00
Technician III	2.00	67.00	134.00
Technician VI	2.00	52.00	104.00
Totals	28.00		2,470.00
Total Labor			2,470.00

#### Reimbursable Expenses

Direct Expense-Reproduction	30.00
Total Reimbursables	30.00 30.00

Total this Invoice \$2,500.00

# INVOICE

INV59258

## IMWCA

IOWA MUNICIPALITIES WORKERS' COMPENSATION ASSOCIATION  
500 SW 7TH STREET, SUITE 101  
DES MOINES, IA 50309-4506  
PHONE: 800-257-2708

DATE

10/1/2015

PAGE:

1

Mbr No: 0706 Member Name:  
Washington, City of

Washington, City of  
215 E Washington

Washington IA 52353

Please remit payment to: IMWCA, P.O. Box 310009, Des Moines, IA 50331-0009

PURCHASE ORDER NO.	CUSTOMER ID	SALES ID	SHIPPING METHOD	PAYMENT TERMS	REQ'D SHIP DATE	MASTER NUMBER
--------------------	-------------	----------	-----------------	---------------	-----------------	---------------

WASHI001 AG0075

QUANTITY	ITEM NUMBER	DESCRIPTION	UOM	DISCOUNT	UNIT PRICE	EXTENDED PRICE
----------	-------------	-------------	-----	----------	------------	----------------

1.00	INSTALL4	Installment 4 - Work Comp Prem 15-16			9,316.00	\$9,316.00
------	----------	--------------------------------------	--	--	----------	------------

This invoice is due by November 1, 2015.

A FINANCE CHARGE of 1.5% (APR 18%) will be added to balances over 30 days past the due date.

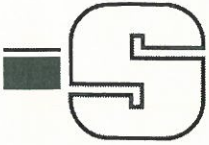
When you provide a check as payment, you authorize IMWCA either to use the information from your check to make a one-time electronic fund transfer from your account or to process the payment as a check transaction. For inquiries please call 515-244-7282.

Subtotal	\$9,316.00
Bond Credit	\$0.00
Misc	\$0.00
Total	\$9,316.00

*Thank You*

080756 07-03





**INVOICE FOR PROFESSIONAL SERVICES  
SUMMARY**

Mike Roe  
Washington Airport Commission  
PO Box 516  
Washington, IA 52353

Invoice Date: 8/27/2015

Invoice No: 19  
Billing Period: 7/1/2015 to 7/31/2015  
S&A Project No: 109.1021.01B

Client Project #:  
County: Washington  
**Rehabilitate Runway Construction Services**

	Contract Estimate	Cumulative to Date	Previous Invoices	Current Period
Labor Dollars	\$65,893.20	\$67,093.02	\$66,214.44	\$878.58
Overhead 152.83%	\$100,704.58	\$102,538.27	\$101,195.54	\$1,342.73
Overhead Adjustments		\$0.00	\$0.00	\$0.00
Direct Expenses	\$9,750.00	\$7,900.39	\$7,749.16	\$151.23
Subconsultants (including authorized contingency)				
Construction Project Management	\$0.00	\$10,000.00	\$10,000.00	\$0.00
Materials Testing	\$22,000.00	\$15,450.34	\$14,969.34	\$481.00
Electrical Review	\$5,000.00	\$0.00	\$0.00	\$0.00
Subtotal	\$203,347.78	\$202,982.02	\$200,128.48	\$2,853.54
Fixed Fee	\$16,659.78	\$16,659.78	\$16,493.18	\$166.60
Authorized Contingency	\$0.00			
Total Authorized Amount	\$220,007.56			
Total Billed to Date	\$219,641.80	\$219,641.80	\$216,621.66	<b>\$3,020.14</b>
Remaining Authorized Balance	\$365.76			
Unauthorized Contingency				
Snyder & Associates	\$0.00			

SNYDER & ASSOCIATES, INC.

Mark Land

002-8-2080 Initials gca

EXP. Runway 13-31

Vender # \_\_\_\_\_ Date Rec. 9-14-15

Due Date \_\_\_\_\_ Inv # \_\_\_\_\_

**REMIT TO:**

**2727 SW Snyder Blvd. - PO Box 1159, Ankeny, IA 50023**

email: ar@snyder-associates.com

Federal E.I.N. 42-1379015





Public Financial Management, Inc 215-567-6100  
Two Logan Square, Suite 1600 215-567-4180  
18th & Arch Streets Fax  
Philadelphia, PA 19103-2770 www.pfm.com

Mr. Brent Hinson  
City of Washington, Iowa  
215 E. Washington  
Washington IA 52353  
USA

September 21, 2015

**INVOICE : 14554**

**RE:** For Financial Advisory Services provided to the City of Washington, Iowa in connection with the \$2,335,000 General Obligation Capital Loan Notes, Series 2015.

---

**INVOICE**

---

Description	Total
Professional Fees	\$15,000.00
AFPI Printing	\$64.24
Posting	\$300.00
Meal	\$5.27
Mileage	\$131.10
<b>Total Amount Due</b>	<b>\$15,500.61</b>

**Remittance Address:**  
Public Financial Management, Inc.  
PO Box 62920  
Baltimore, MD 21264-2920

**EFT Instructions:**  
M&T Bank  
ABA (for Wires) : 022000046  
ABA (for ACH) : 031302955  
Acct#: 9856661229

**INVOICE TERMS: UPON RECEIPT**

04.01541.002

**PAWS & More Animal Shelter**

1004 1/2 West Madison Street  
Washington, IA 52353

**Invoice**

Date

10/1/2015

Invoice #

39

**Bill To**

City of Washington  
PO Box 516  
Washington, IA 52353

Terms

DUE UPON RE...

Description	Quantity	Rate	Amount
Animal Services-1st quarter 2016 (July-Sept. 2015)	0.25	16,000.00	4,000.00
		<b>Total</b>	\$4,000.00

**Kevin D. Olson**  
**Attorney-at-Law**  
**1400 5<sup>th</sup> Street, P.O. Box 5127**  
**Coralville, Iowa 52241**  
**Phone (319) 351-2277 Fax: (319) 351-2279**

---

October 2, 2015

Mr. Brent Hinson, City Administrator  
City of Washington, Iowa  
215 E. Washington Street  
Washington, Iowa 52353

**INVOICE**

For legal services rendered to the City of Washington, Iowa

TOTAL HOURS	13.5 hours (reg)
TOTAL MILEAGE	264 miles
Hourly Rate	\$90/hour- Reg
Mileage Rate	\$0.56 per mile
TOTAL FOR THIS INVOICE	\$1,362.84

**WWTP report  
October 6, 2015  
Council Meeting**

- **After hour alarm and dog call outs –**
  - 13<sup>th</sup> dog call, Safety Center reported a dog to be picked up 1600 N 6<sup>th</sup>, 10:20 p.m. Jason
  - 14<sup>th</sup> dog call, Safety Center reported a dog bite & a dog to be picked up at 725E 15<sup>th</sup>, Jason
  - 18<sup>th</sup> WWTP, high water alarms, 8:00 p.m. Jason
  - 20<sup>th</sup> dog call, Safety Center reported a dog to be picked up at 1025 N 2<sup>nd</sup>, Jason
  - 26<sup>th</sup> WWTP, generator running, 9:30 a.m. Jason & Delen
  - 26<sup>th</sup> WWTP, high priority alarm, 3:20 p.m. Delen
  - 28<sup>th</sup> dog call, Safety Center reported a dog to be picked up on East Polk, 8:30 p.m. Delen
  - 28<sup>th</sup> dog call, Safety Center reported a dog to be picked up at 427 E Jefferson, 10:00 p.m. Delen
- **Dept Head meetings –** I attended the meetings on the 15<sup>th</sup>, 22<sup>nd</sup>, and the 29<sup>th</sup>.
- **Iowa Grow, Inc (IGI) –** Gilbert and crew finished pumping out the old sludge storage tank at the old WWTP. They will start removing the solids from the old sludge storage tank on September 14, 2015. The bio-solids from this tank were pumped into the East EQ. This work is part of bio-solids removal project. IGI will remove and land apply the solids from the bottom of the East EQ basin later this fall after the crops have been harvested.
- **SBR blower #2 VFD –** Nick of JETCO was at the WWTP to install the new transformer in the VFD. Blower #2 was back in service by 10:30 a.m. on the 22<sup>nd</sup>. The stand-by SBR blower was taken out of service at that time, too.
- **SBR's 3 & 4–** SBR 3 was put back in service on September 15, 2015. SBR 4 was taken out of service on September 23, 2015. We started draining the basin shortly after that from the normal low water level of twelve and one half (12.5') feet. We needed the basin to be around one and a half (1.5') feet before we can start cleaning the nine hundred (900) diffuser membranes and inspect the air pipes as part of the annual SBR basin maintenance. SBR 4 was put back in service on September 29, 2015. This completes the annual SBR maintenance for 2015.
- **Saturday mornings –** We will be open on Saturday mornings from 7:00 a.m. to 10:00 a.m. on the following dates: October 24<sup>th</sup> & 31<sup>st</sup> November 7<sup>th</sup>, 14<sup>th</sup>, & 21<sup>st</sup> so Washington residents can bring out their yard waste and tree trimmings.
- **Cost estimate letters to area manure contractors –** I sent out letters to four (4) area manure contractors. This project is for the new bio-solids storage basin. The project consists of pumping the basin down and land applying the bio-solids to the farm fields around the WWTP. I requested the cost estimate letters be returned to me by 4:00 p.m. on October 9, 2015.
- **Parkside Estates lift station –** Jason replaced the vacuum pump (primes big pump) for pump #1 at this lift station on September 15<sup>th</sup>.
- **Recent heavy rains –** No by-passes occurred at the WWTP or lift stations during the recent heavy rains. The Underpass on North 2<sup>nd</sup> Avenue was flooded a couple of times though.
- **Treated bio-solids –** We collected treated bio-solid samples on September 29<sup>th</sup> from the East EQ and also from the new bio-solids storage basin. These samples will be analyzed by Test America to make sure the bio-solids are under the IDNR 503 regulations for land application.
- **Mowing –** Delen continues to mow with the JD rider. Jason hooked up the bush hog mower to the LS tractor. Jason mowed the West EQ field, East EQ field, ditches along West Buchanan, West

Main, East 11<sup>th</sup>, and West 5<sup>th</sup> Streets. He also mowed around the city farm. This will be last time of the year to mow with the LS tractor and bush hog mower.

- **Ozonia** – We're still having issues with the UV lamps failing prematurely in module #2. Working with Ozonia to get the burnt out lamps replaced under warranty. Their customer service is terrible.
- **Fall cleanup** – We've been working on getting the WWTP ready for fall cleanup.
- **SASSO safety meeting** – Jason and I attended the meeting in Washington on September 14<sup>th</sup>. The topics were Hazardous Communication and Blood Borne Pathogens. Delen was off that day so he didn't attend the meeting.
- **WWTP power outage** – Electrical power was lost at the WWTP around 9:30 a.m. on September 26, 2015. The main breaker was tripped. The generator ran for a half hour until the power was restored.
- **Iowa Renewal Energy (IRE)** – We will be attending a meeting in the near future with IRE, FOX, IDNR, and City staff to talk about everyone's responsibilities when IRE starts discharging to the city collection system. IRE will also give us a tour of their pretreatment equipment that was recently installed.

**Fred E. Doggett**  
**10/1/2015 3:30 PM**

## Maintenance and Construction Report

8/29/15-9/11/15

**STREETS:** M/C Personnel painted parking areas north of square and the pool, with only one block left to be painted early morning next week. The street sweeper ran its course around the city. Personnel used the cemeteries mower and the parks department's to sweep the chips back towards the middle of the street on all the seal coat streets that were overlaid this past summer. Personnel trimmed trees in various locations around the city including Sitler Dr where the new paving will take place. Personnel seeded all areas of previous excavations. Personnel hauled around 400 ton of clay dirt to the shop from the new water tower site that was not going to be used.

**WATER DISTRIBUTION:** M/C Personnel installed a fire hydrant located at North Ave C-West 2<sup>nd</sup> St including a 6 inch gate valve on the hydrant leg. Personnel repaired a few water box rods and broken lids.

**SEWER COLLECTION:** M/C Personnel continued televising (PACP) sanitary sewer lines in the east end of town. Personnel also continued with manhole inspections in the east end working southward, having everything north of East Washington St completed. Personnel jetted a few lines including North Ave C from West 2<sup>nd</sup> to 255 ft north of West 3<sup>rd</sup> St, locating a few damaged lines with our camera that were created from the new fiber line being installed. The contractor is hiring the repair work to be completed in this particular area. Personnel flushed terminal manholes and trouble spots in the east end using 15,000 gallons of water. Personnel also jetted/root sawed 400 ft on South 3<sup>rd</sup> Ave from East Monroe south.

**STORM SEWER COLLECTION:** M/C Personnel N/A

**MECHANIC/SHOP:** M/C Personnel serviced PD 92 (tire rotation, alternator and front end noise), leaf vac, finished #115 repairs, finished K-9 Unit, PD 96 (service and brakes), PD Tahoe Chief (tablet holder and alternator), FD 3 brush truck (repair steering stabilizer and pump start switch).

**OTHER:** M/C Personnel assisted at the WWTP jetting 425 ft for the company cleaning the old clarifier. Personnel also assisted in Central Park digging out in front of the bandstand for new seeding. Personnel responded to 59 One Call Locates.

*Please note that this report does not include every task M/C personnel performed, but shall be a highlight of our work performed as a department.*

## **Maintenance and Construction Report**

**9/12/15-9/25/15**

**STREETS:** M/C Personnel cold mixed a few areas. The street sweeper operated and completed the town. The yard waste/bag pick up continued. Personnel poured 36.5 yards of concrete in areas of previous excavation in the 1200 block of East Main St. Personnel bladed shoulders and a few alleys. Several loads of spoil was hauled away from the shop.

**WATER DISTRIBUTION:** M/C Personnel shut off 22 water services for nonpayment, (as of 9/25/15 3 still off).

**SEWER COLLECTION:** M/C Personnel televised sanitary sewers, completing over 4,000 ft. Personnel have been continuing manhole inspections in the southeast area and dying a few sewer services as well. Personnel assisted with sewer repair in the 200 block of North Ave C where the new fiber line damaged the sewer in five different locations. Personnel jetted numerous areas needed for televising purposes as well as vacking a few of those areas.

**STORM SEWER COLLECTION:** M/C Personnel unplugged storm intakes, during and after the heavy rains we received.

**MECHANIC/SHOP:** M/C Personnel serviced 302 (alternator), 003 (rotate tires, check brakes and wire inverter), 301 (repair hydro pump clutch), FD 3 (serviced pump motor), PD 79 (brake pads and rotors), 102, PD 97 (rotate tires and check brakes), PD 38 (install VSB hub), PD 96 (rotate tires), 004 (removed bed insert from old truck and installed in new Dodge 004) and greased both end loaders and both back hoes.

**OTHER:** M/C Personnel attended a SASSO meeting on Blood borne Pathogens and Hazardous Communications. Personnel responded to 75 One Call Locates.

*Please note that this report does not include every task M/C personnel performed, but shall be a highlight of our work performed as a department.*



Washington Volunteer Fire Department  
September 9, 2015

July Fires

14 City fires	1810.00
3 rural fires	420.00
Drill	
17 fires and 1 drill	2230.00

Meeting opened Chief Wide in charge

Minutes of the previous meeting were read and approved.

Treasure report was read.

New member Zach Zickfoose was introduced

Zach Thomas made a motion to pay all bills against the department. Seconded by Phil Morris.

Motion passed

Bill Duesbery's Birthday

Committees; Social ; Had pizza before the meeting provide by Modine.

Golf; Aug 23 was the tournament. Had 15 teams. made \$1396. Next years will be Aug.28 2016.

Fire Prevention: October 6 will go to Stewart and St. James. October 7 Lincoln.

Rescue meeting

Communication; Thank you from Extension office for Joey Wallace and Phil Morris.

Thank you from Farm Bureau for cooking at the Fair and a \$100.00 donation.

Old Business; County meeting in Ainsworth Sept. 22.

House burn Went well.

Drill Sept. 16th at 6:30

Kirkwood Fire School in September 26 and 27

New; Hose testing September 30 at 5pm

New Grass truck is going to be from Hieman with chassis coming from Capper.

Truck 3 is getting repaired.

Randy Tisor talked about the importance of rehab at and after fires.

We need help putting up the flag on 9-11 at 7am.

This Friday is hero night at the football game. Parade at 4:00, line up on 5 yard line at 7:30.

September 10 breakfast at U.P. home 7am to 9:30am

discussion of calls:

No other business, roll call taken meeting adjourned.

Secretary

Tom Beauchamp

**SOUTH 12TH STREET / EAST TYLER STREET**

QUANTITIES COMPLETE AS OF 9/14/15

										JTD Qty	
										complete	JTD Extension
1	EXCAVATION, CL 10, RDWY + BORROW	2,415	CY	\$	10.60	3986	\$	42,251.60			
2	EXCAVATION, CL 13, WASTE	1,330	CY	\$	7.10	1330	\$	9,443.00			
3	TOPSOIL, FURN + SPREAD	605	CY	\$	10.00	1054	\$	10,540.00			
4	MODIFIED SUBBASE	950	CY	\$	38.30	950	\$	36,385.00			
5	SHLD FINISH, EARTH	32	STA	\$	200.00	32	\$	6,400.00			
6	RELOCATION OF MAIL BOX	13	EA	\$	350.00	13	\$	4,550.00			
7	STD/S-F PCC PAV'T, CL C CL 3, 7"	6,008	SY	\$	33.50	6008	\$	201,268.00			
8	HMA COMMERCIAL MIX(INCL ASPH BINDER)	15	TON	\$	215.00	18.05	\$	3,880.75			
9	MANHOLE, STORM SWR, SW-401, 48"	4	EA	\$	3,130.00	5	\$	15,650.00			
10	INTAKE, SW-507	2	EA	\$	3,125.00	2	\$	6,250.00			
11	INTAKE, SW-507, TOP ONLY	4	EA	\$	1,545.00	4	\$	6,180.00			
12	INTAKE, SW-508	7	EA	\$	3,645.00	9	\$	32,805.00			
13	INTAKE, SW-509	2	EA	\$	4,760.00	2	\$	9,520.00			
14	INTAKE, SW-541	1	EA	\$	4,480.00	1	\$	4,480.00			
15	MANHOLE ADJUSTMENT, MINOR	10	EA	\$	1,405.00	10	\$	14,050.00			
16	SUBDRAIN, LONGITUDINAL (BACKSLOPE) 4"	2,700	LF	\$	8.80	2700	\$	23,760.00			
17	SUBDRAIN, STD, PERFORATED, 8"	900	LF	\$	12.55	900	\$	11,295.00			
18	SUBDRAIN OUTLET (RF-19C)	30	EA	\$	300.00	30	\$	9,000.00			
19	SUBDRAIN, STD, NON-PERFORATED, 4"	360	LF	\$	8.05	756	\$	6,085.80			
20	STORM SWR G-MAIN, TRENCHED, RCP 2000D, 12"	166	LF	\$	42.00	187	\$	7,854.00			
21	STORM SWR G-MAIN, TRENCHED, RCP 2000D, 15"	57	LF	\$	46.00	57	\$	2,622.00			
22	STORM SWR G-MAIN, TRENCHED, RCP 2000D, 30"	41	LF	\$	56.50	41	\$	2,316.50			
23	REMOVAL OF PAVEMENT	420	SY	\$	9.25	524.3	\$	4,849.78			
24	RMVL OF INTAKE + UTILITY ACCESS	6	EA	\$	585.00	6	\$	3,510.00			
25	SIDEWALK, PCC, 4"	633	SY	\$	29.50	668.9	\$	19,732.55			
26	SIDEWALK, PCC, 6"	183	SY	\$	36.00	186.7	\$	6,721.20			
27	DETECTABLE WARNING	50	SF	\$	28.00	61.02	\$	1,708.56			
28	DRIVEWAY, PCC, 6"	447	SY	\$	36.00	559.13	\$	20,128.68			
29	RMV + REINSTALL SIGN	12	EA	\$	120.00	12	\$	1,440.00			
30	CONSTRUCTION SURVEY	1	LS	\$	8,600.00	1	\$	8,600.00			
31	TRAFFIC CONTROL	1	LS	\$	9,430.00	1	\$	9,430.00			
32	MOBILIZATION	1	LS	\$	12,500.00	1	\$	12,500.00			
33	SEED + FERTILIZE (URBAN)	2	ACRE	\$	2,500.00	2	\$	5,000.00			
34	PERIMETER+SLOPE SEDIMENT CNTL DEVICE, 9"	500	LF	\$	3.65	0	\$	-			
35	RMVL OF PERIMETER+SLOPE SEDIMNT CNTL DEV	500	LF	\$	2.25	0	\$	-			
X1	YARD INTAKE ALONG 12TH		EA	\$	2,000.00	1	\$	2,000.00			
X2	COLD PATCH ASPHALT		TON	\$	178.00	12.1	\$	2,153.80			
X3	WORK AT STA 28+00		LS	\$	691.00	1	\$	691.00			
X4	2" HMA AND MILLING		SY	\$	26.40	160	\$	4,224.00			

VALUE OF COMPLETED WORK:	\$	569,276.22
LESS 0% RETAINAGE:	\$	-
LESS PREVIOUS PAYMENTS:	\$	538,816.05
DUE:	\$	30,460.17

**Applicant License Application ( )**

<b>Name of Applicant:</b> <u>Hy-Vee, Inc.</u>		
<b>Name of Business (DBA):</b> <u>Hy-Vee Parking Lot/Lawn</u>		
<b>Address of Premises:</b> <u>528 HWY 1 South</u>		
<b>City</b> <u>Washington</u>	<b>County:</b> <u>Iowa</u>	<b>Zip:</b> <u>52353</u>
<b>Business</b>	<u>(319) 653-5406</u>	
<b>Mailing</b>	<u>5820 Westown Parkway</u>	
<b>City</b> <u>West Des Moines</u>	<b>State</b> <u>IA</u>	<b>Zip:</b> <u>50266</u>

**Contact Person**

<b>Name</b> <u>Jenna Willert</u>	
<b>Phone:</b> <u>(515) 267-2874</u>	<b>Email</b> <u>jwillert@hy-vee.com</u>

**Classification** Class B Beer (BB) (Includes Wine Coolers)

**Term:** 5 days

**Effective Date:** 10/17/2015

**Expiration Date:** 01/01/1900

**Privileges:**

Class B Beer (BB) (Includes Wine Coolers)

Outdoor Service

**Status of Business**

<b>BusinessType:</b> <u>Privately Held Corporation</u>	
<b>Corporate ID Number:</b> <u>19862</u>	<b>Federal Employer ID</b> <u>42-0325638</u>

**Ownership**

**Randy Edeker**

<b>First Name:</b> <u>Randy</u>	<b>Last Name:</b> <u>Edeker</u>	
<b>City:</b> <u>Urbandale</u>	<b>State:</b> <u>Iowa</u>	<b>Zip:</b> <u>50322</u>
<b>Position:</b> <u>CEO, President</u>		
<b>% of Ownership:</b> <u>0.00%</u>	<b>U.S. Citizen:</b> <u>Yes</u>	

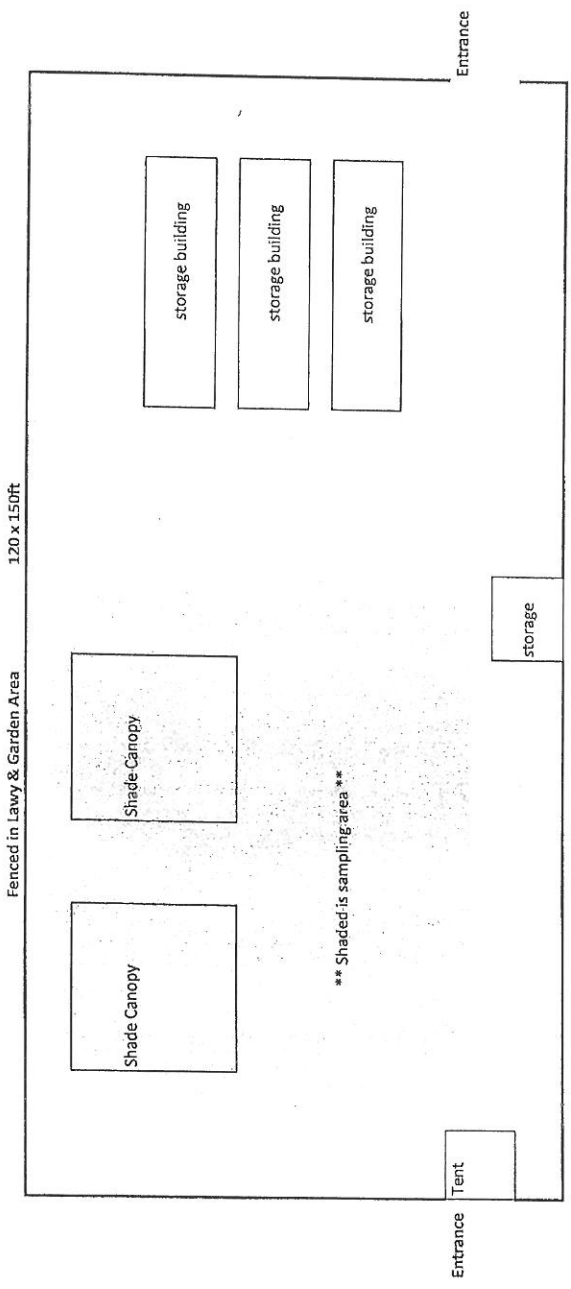
**Jeffrey Pierce**

<b>First Name:</b> <u>Jeffrey</u>	<b>Last Name:</b> <u>Pierce</u>	
<b>City:</b> <u>Waukee</u>	<b>State:</b> <u>Iowa</u>	<b>Zip:</b> <u>50263</u>
<b>Position:</b> <u>Asst Treasurer Financial Reporting</u>		
<b>% of Ownership:</b> <u>0.00%</u>	<b>U.S. Citizen:</b> <u>Yes</u>	

**Insurance Company Information**

<b>Insurance Company:</b> <u>DAKOTA FIRE INSURANCE COMPANY</u>
--

Washington Hy-vee event



# HY-VEE MAIN STORE

# G&R Miller Construction

**1002 W. Monroe, Washington, IA 52353** [www.grmillerconstruction.com](http://www.grmillerconstruction.com)

Office: (319) 653-2553 | Fax: (319) 653-3205 | Toll Free: 800-362-1859

Final App 2 – 10/2/15

NEW 6TH AVENUE STORM SEWER PROJECT

Item	Description	Unit	Est. Quantity	Unit Price	Billed Quantity	Extended Price
1	Clear & Grubb	Unit	20	\$50.00	20	\$1,000.00
2	Excavation, CL10, Roadway & borrow	CY	350	\$3.20	350	\$1,120.00
3	Topsoil, Strip, Salvage & Spread	CY	350	\$3.00	350	\$1,050.00
4	Relocation of Mail Box	EA	5	\$100.00	6	\$600.00
5	Agg, Rodwy Cover, 3/8	Ton	6	\$170.00	6	\$1,020.00
6	Binder Bitument, MC-3000	Gal	50	\$6.00	50	\$300.00
7	Surf, Driveway, CL A CR Stone	Ton	127	\$18.80	127	\$2,387.60
8	Granular Backfill	Ton	85	\$23.50	85	\$1,997.50
9	Apron, Conc, 18"	EA	1	\$1,980.00	1	\$1,980.00
10	Intake, SW-513	Ea	9	\$2,660.00	9	\$23,940.00
11	Subdrain, Longitudianl, (shld) 6"	LF	511	\$20.25	511	\$10,347.75
12	Subdrain Outlet (RF-19C) Storm SWR G-M/Cas/Trnched, RCP 200d, 15"	EA	7	\$105.00	7	\$735.00
13	Storm SWR G-M/Cas/Trnched, RCP 200d, 18"	LF	140	\$41.90	140	\$5,866.00
14	Erosion Stone	Ton	604	\$43.20	604	\$26,092.80
15	Rmv & Reinstall Sign	ea	10	\$73.00	10.55	\$770.15
16	Construction Survey	LS	4	\$100.00	4	\$400.00
17	Traffic Control	LS	1	\$2,500.00	1	\$2,500.00
18	Mobilization	LS	1	\$2,200.00	1	\$2,200.00
19	Seeding & Fertilize (urban)	LS	1	\$6,000.00	1	\$6,000.00
20	Slope Protection, Wood Excelsior	Acre	1	\$3,500.00	1	\$3,500.00
21	Perimeter, slope Sediment Cntl Device, 6"	SQ	90	\$4.00	0	\$0.00
22	Rmvl of Perimter, slope Sediment Cntl Device	LF	500	\$4.00	500	\$2,000.00
23		LF	500	\$1.00	500	\$500.00
subtotal						\$96,306.80
retainage						\$4,815.34
Paymnet						\$81,383.46
Bal Due						\$10,108.00

## POLICE

ALLIANT ENERGY	ALLIANT ENERGY	252.85
ARAMARK UNIFORM SERV INC.	SERVICE	211.01
ARNOLD MOTOR SUPPLY	SUPPLIES <i>alternators, Batteries,</i>	1104.63
BARRON MOTOR SUPPLY	SUPPLIES	180.51
COBB PETROLEUM	FUEL	1590.44
ELLINGSON, SHAWN	REIMB FOR LODGING	394.74
EMBROIDERY BARN	PATCHES & ALTERATIONS	58.00
HIWAY SERVICE CENTER	SUPPLIES	24.76
IMPRESSIONS COMPUTERS, INC	SERVICE	307.25
JOHN DEERE FINANCIAL	SUPPLIES	46.96
KELTEK	SUPPLIES	91.38
LA POLICE GEAR	POLICE GEAR	223.68
MARCO, INC.	COPIER SERVICE/REPAIR/PMT	431.50
MOCIC	ELLINGSON- CONFERENCE	210.00
QUILL	SUPPLIES	236.10
RAY O'HERRON CO.,INC.	CHEVRON'S	14.47
SCOTT MERRIMAN INC.	FORMS PRINTING - PARKING TICKETS	808.05
SEE, RON	REIMB FOR CONFERENCE	175.00
SHOTTENKIRK, INC.	REPAIRS	262.39
SITLER'S SUPPLIES INC.	BATTERIES	15.00
SUNSET LAW ENFORCEMENT	AMMUNITION	994.81
ULTRAMAX	SUPPLIES	798.00
VERIZON WIRELESS	CELLULAR PHONE/SERVICE	1191.11
VISA	SUPPLIES AND EQUIPMENT	5057.38
WAL-MART	SUPPLIES	373.88
	<b>TOTAL</b>	<b>15053.90</b>

## FIRE

ALLIANT ENERGY	SERVICE	529.31
ARNOLD MOTOR SUPPLY	SUPPLIES	22.30
COBB PETROLEUM	FUEL	101.99
MINCER FORD	ENGINE OIL LEAK #3 ( <i>Brush Truck</i> )	2853.89
SANDRY FIRE SUPPLY	BATTERY PACK	421.00
VERIZON WIRELESS	CELLULAR PHONE SERVICE	102.01
WASH CO HOSPITAL	SCREENING	308.00
WINDSTREAM IOWA COMMUNICATIONS	SERVICE	172.12
	<b>TOTAL</b>	<b>4510.62</b>

## DEVELOP SERV

ACE-N-MORE	SUPPLIES	51.98
ARNOLD MOTOR SUPPLY	SUPPLIES	116.72
BRUNS, DAVID	EQUIP/MILEAGE REIMB	54.24
CALIFORNIA CONTRACTORS SUPPLIES INC	GLOVES <i>safety gloves</i>	928.80
COBB PETROLEUM	FUEL	61.43
IOWA CHAPTER IAEI	CONFERENCE- STEVE DONNELLY	130.00
SITLER'S SUPPLIES INC.	SURFACE PEN BATTERIES	27.00
VERIZON WIRELESS	CELLULAR PHONE	292.17
VISA	SURFACE COMP, CASE, MEMBER	1058.89
	<b>TOTAL</b>	<b>2721.23</b>



LIBRARY	ALLIANT ENERGY	ALLIANT ENERGY	2409.27
	AMAZON	MATERIALS & SUPPLIES	585.52
	CINTAS CORP LOC. 342	SERVICE	38.71
	DEMCO	BOOK SUPPLIES	67.44
	EBERT SUPPLY CO.	SUPPLIES	149.45
	FAREWAY STORES	SUPPLIES	19.60
	GALE/CENGAGE LEARNING	WESTERNS	36.34
	ORIENTAL TRADING COMPANY INC	SUPPLIES	31.98
	SCHAEFER CLEANING	CLEANING- OCTOBER 2015	1125.00
	STAPLES ADVANTAGE	SUPPLIES	78.64
	WASH CHAMBER OF COMMERCE	LEADERSHIP WASHINGTON	225.00
	WCDC INC	WINDOW WASHING	30.00
	WINDSTREAM IOWA COMMUNICATIONS	ELEVATOR LINE FOR LIBRARY	53.78
		<b>TOTAL</b>	<b>4850.73</b>
PARKS	ACE-N-MORE	SUPPLIES	273.38
	ALLIANT ENERGY	ALLIANT ENERGY	1522.57
	COBB PETROLEUM	FUEL	592.27
	FAREWAY STORES	SUPPLIES	44.13
	G & R MILLER CONSTRUCTION	SUPPLIES	2.45
	GREINER DISCOUNT TIRES	TIRES & REPAIR	97.95
	HY-VEE	SUPPLIES	223.45
	IDEAL READY MIX	SERVICE	684.38
	JOHN DEERE FINANCIAL	SUPPLIES	231.17
	KALONA BLACKSMITH & WELDING	SERVICE	162.05
	KRABILL SEAMLESS GUTTERS	GUTTERS-PARK MAINT BLDG	331.00
	MARIE ELECTRIC INC.	REPAIRS	305.71
	MARTIN'S FLAG CO.	FLAG	96.58
	REDLINE CONSTRUCTION INC.	SEED, <i>peat</i>	1987.50
	SCHROCK, DEVON	STRAW BALES	72.00
	SITLER'S SUPPLIES INC.	LED FLOODS <i>skate park</i>	1400.00
	STOUT SEED SALES	GRASS SEED	115.00
	VERIZON WIRELESS	CELLULAR PHONE	27.99
	WASHINGTON AG SUPPLY	CROP OIL	26.58
	WASHINGTON LUMBER	SUPPLIES	9.98
		<b>TOTAL</b>	<b>8206.14</b>
POOL	JOHN DEERE FINANCIAL	SUPPLIES	2.67
	PIERCE AUTO BODY	SANDING AND PAINTING	793.00
	POOL TECH INC.	CHEMICALS	256.82
		<b>TOTAL</b>	<b>1052.49</b>
CEMETERY	ACE-N-MORE	SUPPLIES	76.88
	ALLIANT ENERGY	ALLIANT ENERGY	119.01
	ATCO INTERNATIONAL	SUPPLIES	322.95
	JOHN DEERE FINANCIAL	SUPPLIES	3.32
	LOWRY EQUIPMENT	PARTS	110.24
	TWIN STATE & CHEMICAL CO	CHEMICALS	125.00
		<b>TOTAL</b>	<b>757.40</b>
FINAN ADMIN	ALL AMERICAN PEST CONTROL	PEST CONTROL	44.00



ALLIANT ENERGY	ALLIANT ENERGY	640.57
BAKER PAPER CO.	COPY PAPER	113.40
BATTERSON PHOTOGRAPHY	TOP WORKPLACE AWARD	114.96
CINTAS CORP LOC. 342	SERVICE	177.31
EBERT SUPPLY CO.	SUPPLIES	93.50
FAREWAY STORES	SUPPLIES	54.74
GOOGLE INC	SERVICE	212.50
JOHNSON, SANDRA	MILEAGE REIMBURSEMENT	376.00
KCII	RADIO ADVERT. FALL CLEANUP	297.00
PIP PRINTING	FORMS	236.34
PITNEY BOWES GLOBAL FINANCIAL SERVICES	POSTAGE METER RENTAL	335.16
PURCHASE POWER	POSTAGE METER	84.51
QUILL	STORAGE BOXES	159.98
SORRELL GLASS	SUPPLIES	39.00
VERIZON WIRELESS	CELLULAR PHONE SERVICE	133.99
VISA	SURFACE COMP, CASE, MEMBER	44.27
WINDSTREAM IOWA COMMUNICATIONS	SERVICE	142.14
	<b>TOTAL</b>	<b>3299.37</b>

#### AIRPORT

ACE-N-MORE	SUPPLIES	4.99
ALLIANT ENERGY	SERVICE	771.65
ALMELIEN, JAMES	SUPPLIES	37.87
BOLTON & MENK, INC.	RAMP-PARKING APRON	800.00
EASTERN AVIATION FUELS INC	FUEL	22460.56
HORAK INSURANCE CO	INSURANCE RENEWAL	2881.00
MIDWEST LIQUID SYSTEMS	FUEL FARM <i>change fitters ~ repair hand pumps</i>	2401.05
ROE, MIKE	REIMB <i>Airport Conference in Kansas City</i>	856.85
TINDAL LAW OFFICE	LEGAL WORK	150.00
VERIZON WIRELESS	CELLULAR PHONE SERVICE	27.99
WAL-MART	SUPPLIES	67.38
WASH CO RECYCLING CTR	REFUSE	80.00
	<b>TOTAL</b>	<b>30539.34</b>

#### ROAD USE

ACE-N-MORE	SUPPLIES	43.98
ALLIANT ENERGY	ALLIANT ENERGY	55.88
ARNOLD MOTOR SUPPLY	SUPPLIES	172.69
CENTRAL IOWA DISTRIBUTING	SUPPLIES	287.00
COBB PETROLEUM	FUEL	593.30
DELONG, BRENDON	SIDEWALK REPAIR PROGRAM	945.60
DOUDS STONE LLC	ROADSTONE	218.44
GREINER DISCOUNT TIRES	TIRES & REPAIR	56.50
IA DEPT OF TRANSPORTATION	ICE MELT FOR SIDEWALKS	258.30
IOWA PRISON INDUSTRIES	SIGNS	198.00
JOHN DEERE FINANCIAL	SUPPLIES	72.97
KIMBALL MIDWEST	SUPPLIES	220.13
RIVER PRODUCTS	ROAD STONE	240.96
SMALL TIME INVESTORS	SIDEWALK REPLACEMENT	591.00
STEPHENS, JAMES AND MARGARET	SIDEWALK REPLACEMENT	197.00
TRANS IOWA EQUIPMENT	REPAIR <i>parts, equipment</i>	2218.29
WASH CO TREASURER	SIDEWALK REPLACEMENT PROG	2324.60
WELLINGTON, EARL	CIRCUIT TESTER	107.99

		<b>TOTAL</b>	<b>8802.63</b>
<b>STREET LIGHTING</b>	ALLIANT ENERGY	ALLIANT ENERGY	9767.34
	BROWN TRAFFIC PRODUCTS	TRAFFIC BULBS	4278.00
	MARIE ELECTRIC INC.	REPAIRS	313.63
	WASHINGTON ELECTRIC INC.	REPAIR	186.50
		<b>TOTAL</b>	<b>14545.47</b>
<b>CAPITAL EQUIPMENT</b>	HIWAY SERVICE CENTER	SUPPLIES FOR LIGHTS FOR TRUCK	12.98
	LINE X OF IOWA CITY	BED LINER ENGINEERS TRUCK	1991.00
	STEW HANSEN DODGE CITY JEEP	2015 DODGE RAM- ENG DEPT	25051.00
		<b>TOTAL</b>	<b>27054.98</b>
<b>CAPITAL PROJECTS</b>	WASH TITLE & GUARANTY CO	ABSTRACT FOR 220 E JEFFERS	215.00
		<b>TOTAL</b>	<b>215.00</b>
<b>LIBRARY GIFT</b>	AMAZON	MATERIALS & SUPPLIES	7.30
	CUSTOM IMPRESSIONS INC	SUPPLIES	18.00
	HY-VEE	SUPPLIES	55.69
		<b>TOTAL</b>	<b>80.99</b>
<b>WATER PLANT</b>	ACE-N-MORE	SUPPLIES	168.36
	ALLIANT ENERGY	ALLIANT ENERGY	23675.91
	CARROLL, SUSAN	MILEAGE REIMB	14.95
	CLARK, CHERI	DEPOSIT REFUND	58.49
	CLIFTON, JODIE	DEPOSIT REFUND	78.09
	COBB PETROLEUM	FUEL	38.93
	COOK, COURTNEY	DEPOSIT REFUND	41.45
	FERGUSON WATERWORKS# 2516	METERS	3667.10
	GOINGS, CHAD	DEPOSIT REFUND	53.46
	HANSON, GEORGE	DEPOSIT REFUND	129.79
	JIMENEZ, RAUL	DEPOSIT REFUND	54.16
	MARTIN, DANNY	DEPOSIT REFUND	32.06
	HAMPSHER, MARSHA	DEPOSIT REFUND	31.68
	MONTOYA, JESSICA	DEPOSIT REFUND	103.74
	POSTMASTER	BULK MAILING WATER BILLS	831.90
	SANCHEZ, CLAUDIA I	DEPOSIT REFUND	74.59
	SEABA, STANLEY	DEPOSIT REFUND	46.26
	STATE HYGIENIC LAB	PILOT STUDY <i>R/O</i>	3278.00
	STOUT, ADAM	DEPOSIT REFUND	22.09
	STREFF, ROSE	MILEAGE REIMB	8.05
	VERIZON WIRELESS	CELLULAR PHONE	52.00
	VISA	HP DESKTOP	379.99
	WAL-MART	SUPPLIES	20.17
	WASHINGTON ELECTRIC INC.	HOOK UP RO SKID/REPAIR	2182.62
	WATER SOLUTIONS UNLIMITED	CHEMICALS	1396.25
	WEATHERMAN, MARYLIN	DEPOSIT REFUND	4.84
	WINDSTREAM IOWA COMMUNICATIONS	SERVICE	41.24
		<b>TOTAL</b>	<b>36486.17</b>
<b>WATER DIST</b>	ACE-N-MORE	SUPPLIES	481.72

ALLIANT ENERGY	ALLIANT ENERGY	78.25
ARNOLD MOTOR SUPPLY	SUPPLIES	295.60
BARRON MOTOR SUPPLY	SUPPLIES	101.72
CHEMSEARCH	SUPPLIES	229.01
COBB PETROLEUM	FUEL	1028.07
IOWA ONE CALL	SERVICE	96.70
MOORE'S BP AMOCO INC	FUEL	23.98
TIFCO INDUSTRIES	HEARING PROTECTION	234.70
UTILITY EQUIPMENT CO	SUPPLIES AND EQUIPMENT	591.56
VERIZON WIRELESS	CELLULAR PHONE	92.89
VISA	CHARGES	1927.43
WAL-MART	SUPPLIES	312.08
	<b>TOTAL</b>	<b>5493.71</b>

<b>WATER CAP PROJ</b>	IA DEPT OF NATURAL RESOURCES	W 5TH ST WATER MAIN PERMIT	486.90
		<b>TOTAL</b>	<b>486.90</b>

<b>SEWER PLANT</b>	ACE-N-MORE	SUPPLIES	174.97
	ALLIANT ENERGY	SERVICE	12721.54
	CENTRAL IOWA DISTRIBUTING	SUPPLIES	357.30
	COBB PETROLEUM	FUEL	37.16
	JOHN DEERE FINANCIAL	SUPPLIES	79.95
	STATE HYGIENIC LAB	NPDES PERMIT- TESTING FEES	914.00
	TESTAMERICA LABORATORIES INC	TESTING CHARGE	1298.25
	USA BLUEBOOK	USA BLUEBOOK	146.32
	VERIZON WIRELESS	CELLULAR PHONE	104.00
	WASHINGTON LUMBER	SUPPLIES	21.69
		<b>TOTAL</b>	<b>15855.18</b>

<b>SEWER COLLECT</b>	ACE-N-MORE	SUPPLIES	185.48
	ALLIANT ENERGY	ALLIANT ENERGY	887.87
	ALTORFER	EQUIPMENT RENTAL	309.00
	CHEMSEARCH	SUPPLIES	712.67
	COBB PETROLEUM	FUEL	421.74
	GILLUND ENTERPRISES	SUPPLIES	173.82
	GREINER DISCOUNT TIRES	TIRES & REPAIR	24.45
	IDEAL READY MIX	SERVICE	2215.00
	INDUSTRIAL TECHNOLOGY GROUP	SOFTWARE & TABLET	4995.00
	PIONEER RESEARCH CORP	CHEMICALS	1204.15
	SCHIMBERG CO.	CLAY PIPE	422.50
	TRANS IOWA EQUIPMENT	4-WAY WIRELESS REMOTE	1704.00
	UTILITY EQUIPMENT CO	SUPPLIES AND EQUIPMENT	807.25
	VERIZON WIRELESS	CELLULAR PHONE	124.00
	WAL-MART	SUPPLIES	69.88
	WASHINGTON RENTAL	STARTER ROPE	30.40
		<b>TOTAL</b>	<b>14287.21</b>

<b>SANITATION</b>	CITY OF WASH - PETTY CASH	CITY OF WASH - PETTY CASH	250.00
	CUSTOM IMPRESSIONS INC	FALL CLEAN-UP SIGNS	323.80
	LUKE WASTE MANAGEMENT	REFUSE AND RECYCLING	24869.50
	LUKE WASTE MANAGEMENT	BULKY STICKERS	112.00

PIP PRINTING  
WASH CO HUMANE SOCIETY

LABELS	296.26
SEPTEMBER COLLECTIONS	442.00
<b>TOTAL</b>	<b>26293.56</b>

<b>TOTAL</b>	<b>220593.02</b>
--------------	------------------

CITY OF WASHINGTON, IA  
VISA Card Charges - 2015

CLAIMS REPORT 10/6/2015

<b>POLICE</b>	AMAZON - URBAN ARMOR GEAR CASE FOR MICROSOFT SURFACE	69.95			
	AR 500 ARMOR - RIFLE PLATES - BODY ARMOR - ALL OFFICERS	1,527.00			
	ITUNES - MICROSOFT OFFICE WORD EDITION PACK FOR IPAD	2.96			
	EMP - NITRILE GLOVES	112.80			
	DIRECTED ELECTRONIC INC - CELLULAR ACTIVATION 3 YEAR FEE FOR EXPLORER	149.79			
	DIRECTED ELECTRONIC INC - CELLULAR ACTIVATION 3 YEAR FEE FOR TAHOE	149.79			
	OFFICE MAX - PENS	27.79			
	OFFICE MAX - PENS	21.38			
	DIRECTED ELECTRONIC INC - CELLULAR ACTIVATION 3 YEAR FEE FOR DURANGO	149.79			
	DIRECTED ELECTRONIC INC - CELLULAR ACTIVATION 3 YEAR FEE FOR CROWN VIC	149.79			
	OPTICS PLANET - PRINTER CAR ADAPTER	73.87			
	MICROSOFTSTORE - OFFICE 365	79.99			
	MP3CAR INC - DURANGO COMPUTER HUB	88.15			
	AMAZON - FIREWALL	449.98			
	AMAZON - FIREWALL	501.12			
	AMAZON - EBOOK - CONFIGURING SONICWALL FIREWALLS	21.34			
	AMAZON - 12V CAR ADAPTER	12.98			
	AMAZON - STOP AND TAIL LIGHT	9.99			
	ASKNET-CYBERLINK SHOP - VIDEO/AUDIO EDIT SOFTWARE	98.49			
	JD)*MYBACKUP.COM -ONE YEAR BACKUP FOR OFFSITE	952.20			
	AMAZON - 4 PORT USB HUB	230.34			
	AMAZON - 2" AKRON HEAVY DUTY TABLET	177.89			
	<b>Total</b>	<b>5,057.38</b>			
<b>WATER PLANT</b>	TECHNOLOGY SERVICES - HP DESKTOP COMPUTER	379.99			
	<b>Total</b>	<b>379.99</b>			
<b>FINAN ADMIN</b>	AMAZON - PENS	44.27			
	<b>Total</b>	<b>44.27</b>			
	<b>Total</b>	<b>-</b>			
	<b>Total</b>	<b>-</b>			
	<b>Total</b>	<b>-</b>			
	<b>Total</b>	<b>-</b>			
<b>WATER DIST</b>	KIRKWOOD CON EDU - BASIC WATER DIST TRAINING FOR PARKER TURNER	450.00			
	KIRKWOOD CON EDU - BASIC WATER DIST TRAINING FOR JACOB BRINNING	450.00			
	LENOVO GROUP - LAPTOP	793.94			
	STAPLES DIRECT - TIME CARDS	36.54			
	MISTCOOLINGINC - HYDROSTATIC TESTING PUMP	196.95			
	<b>Total</b>	<b>1,927.43</b>			
<b>ENGINEERING</b>	BEST BUY- MICROSOFT SURFACE	773.89			
	IAPMO - MEMBERSHIP	150.00			
	INTL CODE COUNCIL - MEMBERSHIP	135.00			
	<b>Total</b>	<b>1,058.89</b>			
	<b>Total</b>	<b>-</b>			
	<b>Total</b>	<b>-</b>			
	<b>Total</b>	<b>-</b>			

**Illa Earnest**

---

**From:** Chris Hanson [chrishanson1968@gmail.com]  
**Sent:** Friday, October 02, 2015 8:49 AM  
**To:** iearnest@washingtونيowa.net  
**Subject:** Haunted Walk for Washington Music Boosters  
**Attachments:** Haunted Walk route map.pdf

Good morning Illa,

I am writing to request being added to the City Council meeting agenda for next Tuesday, October 6th on behalf of the Washington Music Boosters. We will be requesting permission to hold a Haunted Walk on a portion of the Keewash Trail, the Sesquicentennial Park and Hayes Timber on the nights of October 22nd, 23rd, 24th, 30th & 31st. I have presented our plan to the Washington Parks Board and Steve Anderson from the county and they have agreed to allow the event to occur.

I will be requesting that West 3rd be closed on those evenings from the railroad bridge to West 5th to ensure participants safety.

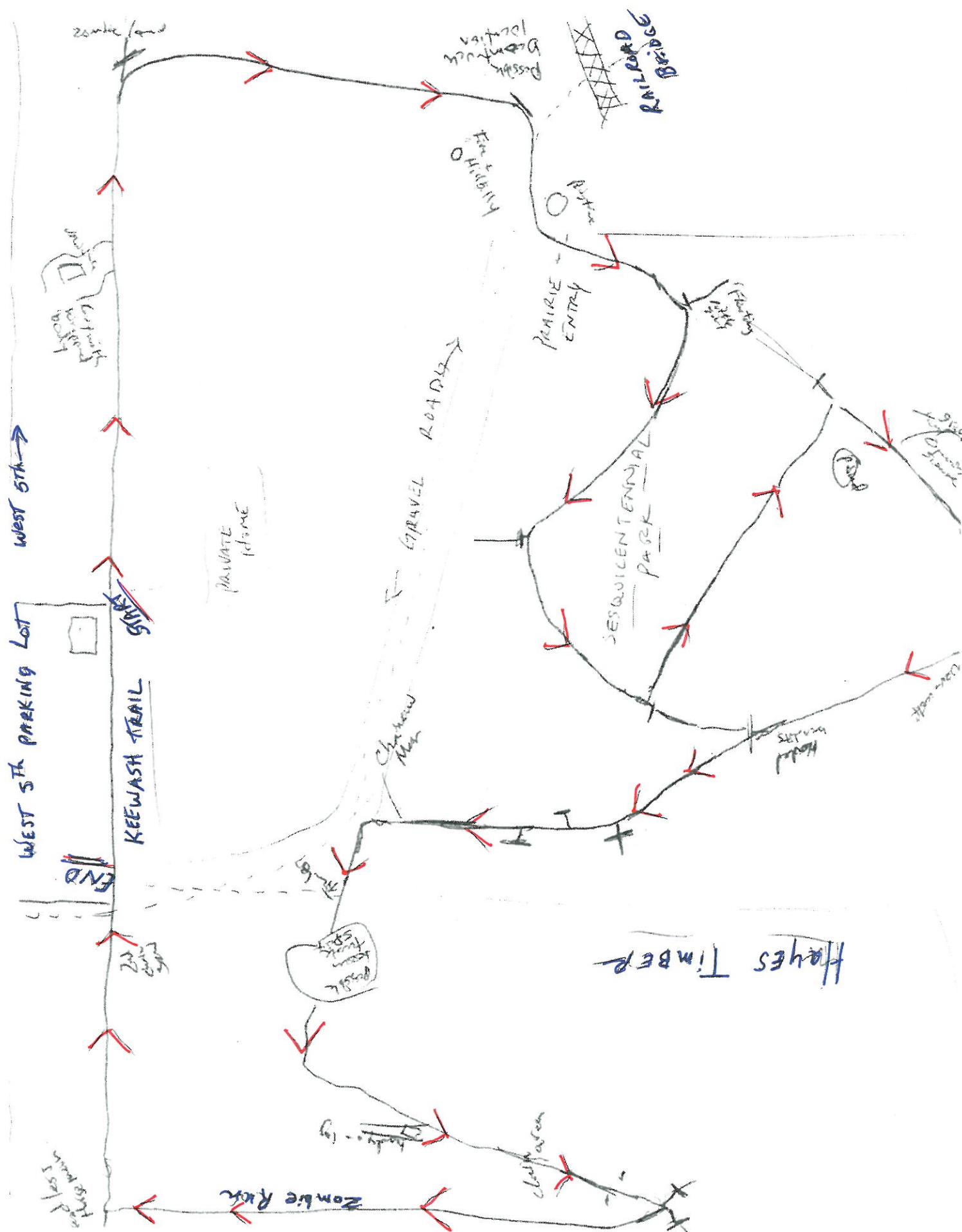
Attached you will find a hand drawn map that depicts the route of the walk.

Please let me know if you need more information and that you received this message.

Thank you!

Chris





SEPTEMBER 2015

JOB #	ADDRESS	Complainant	Nuisance/Complaint/Concern	Complaint Date	Warning Date	Method of Warning	Clean up deadline	Pics	Action/Results	City Official	Status
1	702 S. 9th St. Ave.	city	car parked on grass	1-Sep	1-Sep	hanger			call from owner not happy with hanger	MH	CLOSED
2	1206 E. 2nd St.	city	tail grass	1-Sep	1-Sep	hanger				MH	CLOSED
3	733 E. Washington St.	city	couch in yard	1-Sep	1-Sep	hanger				MH	CLOSED
4	514 W. Madison St.	citizen	pallet under tarp rear yard trash around rear bldg	2-Sep	2-Sep	hanger	9-Sep	*	9-21 talked to renter stuff gone by 9-25 9-29 sent letter 7 days to remove	MH	open
5	921 E. 2nd St.	city	boat/trailer parked on terrace	2-Sep	2-Sep	hanger				MH	CLOSED
6	739 S. 8TH Ave.	city	trash at garage and in yard between house & garage	3-Sep	3-Sep	hanger	14-Sep		closed for a few days now parking on grass again step 2 letter 9-15	MH	CLOSED
7	1202 N. Iowa Ave.	city	car on grass	3-Sep	3-Sep	hanger	24-Sep		car owner is handicapped will contact owner for permission to gravel	MH	CLOSED
8	811 E. Tyler St.	citizen	Car on drive w/expired plates	3-Sep	3-Sep	hanger				MH	CLOSED
9	703 S. 3rd Ave.	citizen	trash in and around carport	3-Sep	3-Sep	hanger	10-Sep	*	step 2 letter 9-14 D line 9-21 9-28 abated	MH	ABATED
10	202 E. Main St.	citizen	hedge growing over sidewalk	3-Sep	3-Sep	hanger	10-Sep		9-22 reminder hanger Dline 9-28 Rental property letter to owner 10-1-15	MH	open
11	1027 N. 6th Ave	city	junk camper& weeds in yard	8-Sep	8-Sep	letter	17-Sep	*	owner called extended to Oct 1	MH	CLOSED
12	410 E. 2nd St.	city	trash at curb	8-Sep	8-Sep	phone call			will pick up 9-9	MH	CLOSED
13	602 E. 2nd St.	city	2 mattresses behind house	8-Sep	8-Sep	hanger				MH	CLOSED
14	730-732 E. Jefferson St.	city	weeds/brush around house	8-Sep	8-Sep	letter	21-Sep	*	Daughter called 9-22 is working on clean up and disposal of property	MH	open
15	1101 E. Taylor St.	city	car, truck, travel trailer on grass	10-Sep	10-Sep	letter	24-Sep	*		MH	CLOSED
16	321 W. Van Buren St.	city	truck on grass	10-Sep	10-Sep	letter	17-Sep	*	9/16-owner called will be gone before 1st of week	MH	CLOSED
17	1001 N. 6th Ave	citizen	burnt car S. side of street	14-Sep	14-Sep	letter	24-Sep	*	did not find burnt car	MH	CLOSED
18	806 N. 5th St.	city	weeds/brush around house and garage	14-Sep	14-Sep	letter				MH	CLOSED
19	303 E. Jackson St.	city	tree branches growing over sidewalk	14-Sep	14-Sep	letter				MH	CLOSED
20	710 E. Van Buren	city	tv at curb	14-Sep	14-Sep	hanger				MH	CLOSED
21	914 E. 3rd St.	city	weeds rear yard	15-Sep	15-Sep	letter	29-Sep	*		MH	open
22	918 E. 3rd St.	city	weeds rear yard	15-Sep	15-Sep	letter	29-Sep			MH	CLOSED
23	701 S. Ave. B	city	box springs & mattress at curb no tag	15-Sep	15-Sep	hanger			9-28 abated	MH	ABATED
24	701 S. Ave. B	city	trash loose at curb not in bag	15-Sep	15-Sep	hanger	17-Sep			MH	CLOSED
25	1011 N. Iowa Ave.	city	chest of drawers at curb	15-Sep	15-Sep	hanger				MH	CLOSED
26	1037 N. 2nd Ave.	city	weeds W side of house	15-Sep	15-Sep	letter	24-Sep	*		MH	CLOSED
27	314 E. 6th St.	city	Vol trees and weeds E. side of house	16-Sep	16-Sep	letter	24-Sep	*		MH	CLOSED
28	718 E. Main St.	city	trash at rear of house and garage	15-Sep	17-Sep	letter	24-Sep	*	owner called extended to Oct 1 Don't trust verify	MH	CLOSED
29	748 E. Main St.	city	Vol trees and weeds by house and hedge by alley	15-Sep	17-Sep	letter	30-Sep	*		MH	open
30	747 E. 2nd St.	city	weeds vol trees by alley	15-Sep	17-Sep	letter	30-Sep	*		MH	open
31	509 W. Jefferson	city	inop car on grass	16-Sep	16-Sep	hanger				MH	CLOSED
32	211 E. 15th St.	city	box springs & mattress at curb no tag	16-Sep	9-116	hanger				MH	CLOSED
33	105 W. 15th St.	citizen	weeds, tall grass, junk	16-Sep	22-Sep	phone call	28-Sep			MH	CLOSED
34	627 E. 2nd St	citizen	black truck parked on grass all summer	17-Sep	17-Sep	hanger			talked to owner needs 30 days renter trashed property	MH	CLOSED
35	702 Highland Ct.	city	trash at curb & garage tail weeds at rear of lot	17-Sep	17-Sep	phone call				MH	CLOSED
36	1645 Highland Ave.	city	weeds around shed in rear yard	17-Sep	17-Sep	hanger				MH	open
37	620 S. Iowa Ave.	city	Weeds trees brush	21-Sep	21-Sep	letter	30-Sep	*		MH	CLOSED
38	1027 E. 2nd St.	city	vol trees at curb	21-Sep	21-Sep	letter	28-Sep	*		MH	CLOSED
39	733 E. Washington St.	citizen	tail grass	21-Sep	21-Sep	hanger	30-Jul	*		MH	open
40	615 N. 4th Ave	city	weeds vol tres around house-property	21-Sep	21-Sep	letter				MH	open
41	501 S. Ave D	citizen	tall grass	22-Sep	23-Sep	hanger			461-4825 extended to 10-9-15	MH	open
42	703 E. 2nd St.	city	truck on grass	23-Sep	23-Sep	hanger				MH	open
43	1212 E. 2nd St.	citizen	grass clippings on street weeds, vol trees @ house, garage	23-Sep	23-Sep	letter	5-Oct	*		MH	open
44	921 E. 2nd St.	city	boat on grass in front yard again	23-Sep	24-Sep	cert letter	1-Oct	*		MH	CLOSED
45	726 S Iowa Ave	city	couch, love seat, recliner at curb	28-Sep	28-Sep	hanger				MH	CLOSED
46	1303 N. 3rd ave	city	tail grass	24-Sep	24-Sep	hanger	28-Sep			MH	CLOSED
47	710 E Van Buren St	city	old end tables at curb	28-Sep	28-Sep	hanger				MH	CLOSED
48	1001 N 5th Ave.	city	weeds around light pole and street sign	28-Sep	28-Sep	48hr hanger				MH	CLOSED
49	721 N. Ave. B	city	trash at curb	28-Sep	28-Sep	hanger	30-Sep			MH	open
50	428 S. 6th Ave. (vacant lot)	citizen	carpet, junk, weeds,trailer in lot	29-Sep	29-Sep					MH	open
51	428 S. 6th Ave.	City	Junk and trash all over driveway	29-Sep	30-Sep	hanger				MH	open
52	503 S. 3rd Ave	city	truck on grass by garage	30-Sep	30-Sep	hanger				MH	open
53	1614 N. 3rd Ave.	city	inop car on grass	30-Sep	30-Sep	hanger				MH	open
54	1206 E. 2nd St.	city	trash behind garage and on front porch	30-Sep	30-Sep	hanger				MH	open



[illegible]



## VEENSTRA & KIMM, INC.

860 22nd Avenue - Suite 4 • Coralville, Iowa 52241-1565  
319-466-1000 • 319-466-1008(FAX) • 888-241-8001(WATS)

### MEMORANDUM

To: Brent Hinson, City of Washington

Date: October 2, 2015

From: Leland Belding, P.E.

File: 24616-026

Re: La Canada wall evaluation

On Thursday, September 10, 2015 I reviewed the brick wall along the La Canada property adjacent to Madison Street. This memo documents the results of our evaluation and provides a recommendation.

#### Location



Aerial View





Front View

### Wall Description

The wall is a brick freestanding masonry wall on a concrete footing. There are two layers of brick with a hollow center and no indication of steel reinforcement. The top cap consists of concrete blocks sitting on top of the bricks and do not appear to be attached and stay in place through their weight.



Wall



Wall Front



Wall Top

### **Evaluation**

The wall appears to be designed to be a free standing brick fence and not a retaining wall. This was originally designed to be a decorative fence around the property. When the owner filled behind the wall and parked cars on the ground it created soil pressures that the wall was never designed to withstand. The soil and vehicle pressures pushed the wall out and over, breaking the mortar bond between the bricks. There does not appear to be any steel reinforcement in the wall to increase the strength and the wall is remaining in place through its own weight and surface friction with the adjacent wall sections that are intact.

The wall does not appear to be unstable but the concrete caps can be lifted off. The area behind the wall should not be used for parking or storage or any use that will create more soil pressures. As the wall continues to lean over the center of gravity will reach a point that the wall section will fall over.





Wall – 7 Inches of Lean

The wall is leaning 7 inches at its worst location. Both faces of the wall appear to be leaning out at the same angle which leads me to believe there are internal connections securing the front to the back that I was not able to see. This explains why the front face has not fallen even with the 7 inches of lean. Assuming the wall functions as a single unit, the wall can lean approximately one inch more before it can fall over.

### **Recommendation**

The wall is not an immediate hazard but in the near future it should either be removed, replaced with an engineered retaining wall that can support the soil pressures or grade the yard away from the wall and construct a new freestanding wall. The loose top caps are heavy enough they are not going to fall off but if there is a vehicle behind the wall that bumps it there is some concern of it falling off.

# **Drainage Study**

**WASHINGTON – 3<sup>RD</sup> & 5<sup>TH</sup> STREET**

**CITY OF WASHINGTON, IOWA**

**SEPTEMBER 2015**



---

**VEENSTRA & KIMM, INC.**

## Introduction

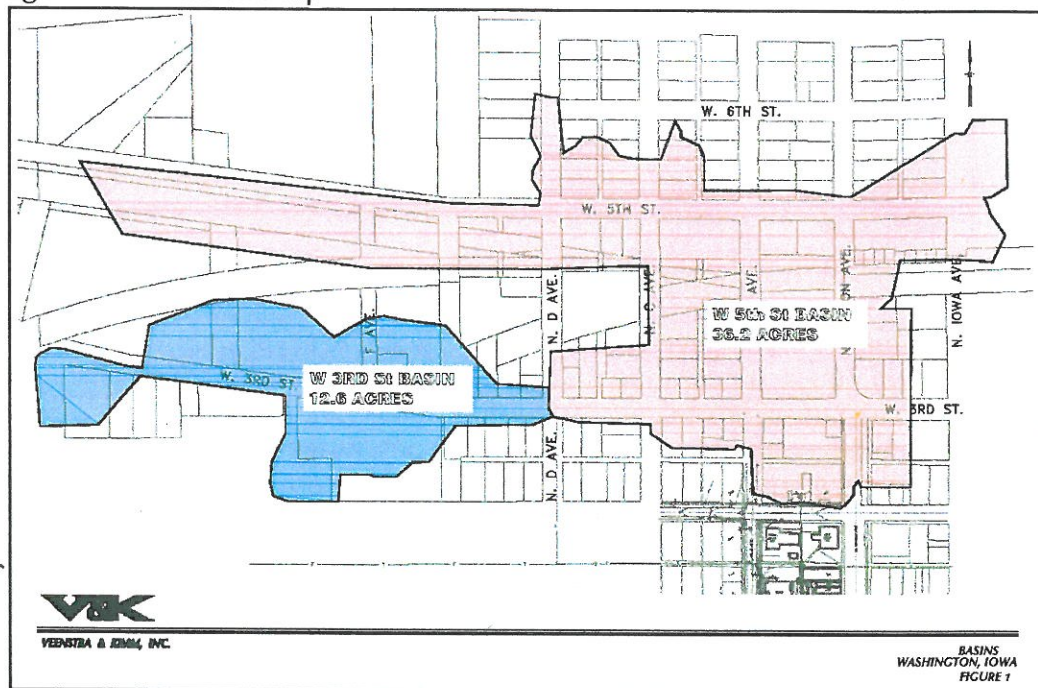
### Purpose of Report

Veenstra & Kimm, Inc., on behalf of the City of Washington, prepared this storm drainage study to evaluate peak runoff and to evaluate the storm sewer system on a tract of land in Washington, Iowa.

### Study Objectives

Evaluate the drainage conditions of the 3<sup>rd</sup> and 5<sup>th</sup> Street drainage basins that feed into the nearby storm structures.

Figure 1 – Location Map



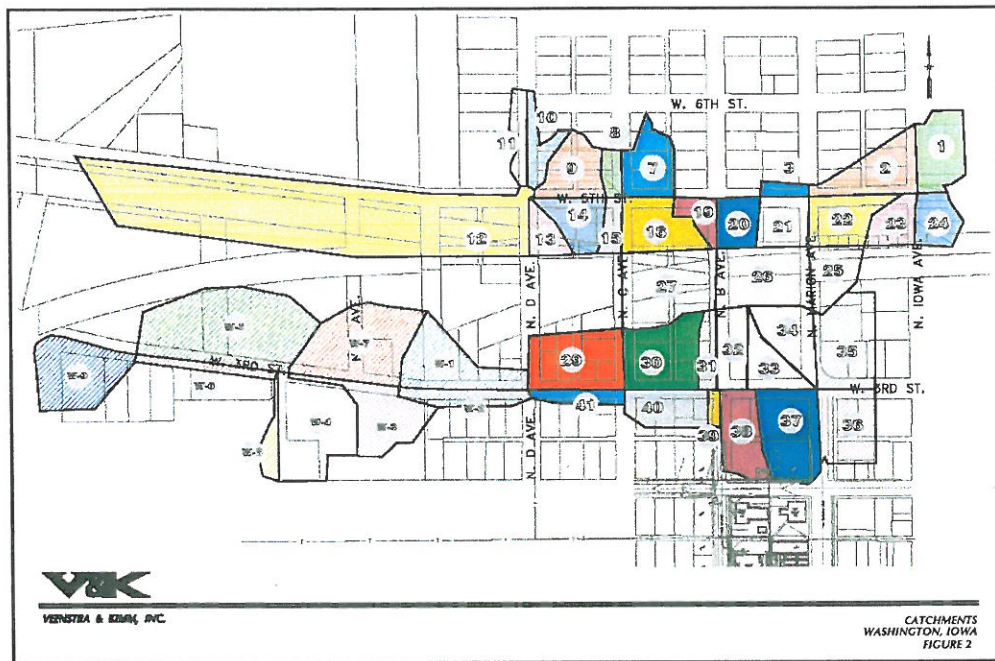
### Project Description

The total size of the 3<sup>rd</sup> and 5<sup>th</sup> Street Basins is approximately 48.8 acres. The topography along 3<sup>rd</sup> Street and D Avenue divides the 48.8-acre basin area into two separate basins, shown in Figure 1.



## Site Characteristics

Figure 2 – Catchments



The first basin, hereinafter referred to as 5<sup>th</sup> Street Basin and shown in Figure 2, consists of 36 catchments and 36.2 acres of residential and industrial area. The basin consists of approximately 40 storm structures, ranging mostly of area, curb, and modified manhole intakes, and storm pipes, ranging in size from 24-inch to 6-inch. The northern limit of the 5<sup>th</sup> Street Basin is a storm pipe that runs along 5<sup>th</sup> Street west of N. Iowa Avenue to the outflow ditch located west of F Avenue. The southern limit is a storm pipe that runs along 3<sup>rd</sup> Street, bounded to the east by N. Marion Avenue and west by N. D Avenue, except for two intakes located a half a block south of the intersection of W. 3<sup>rd</sup> Street and N. Marion Avenue.

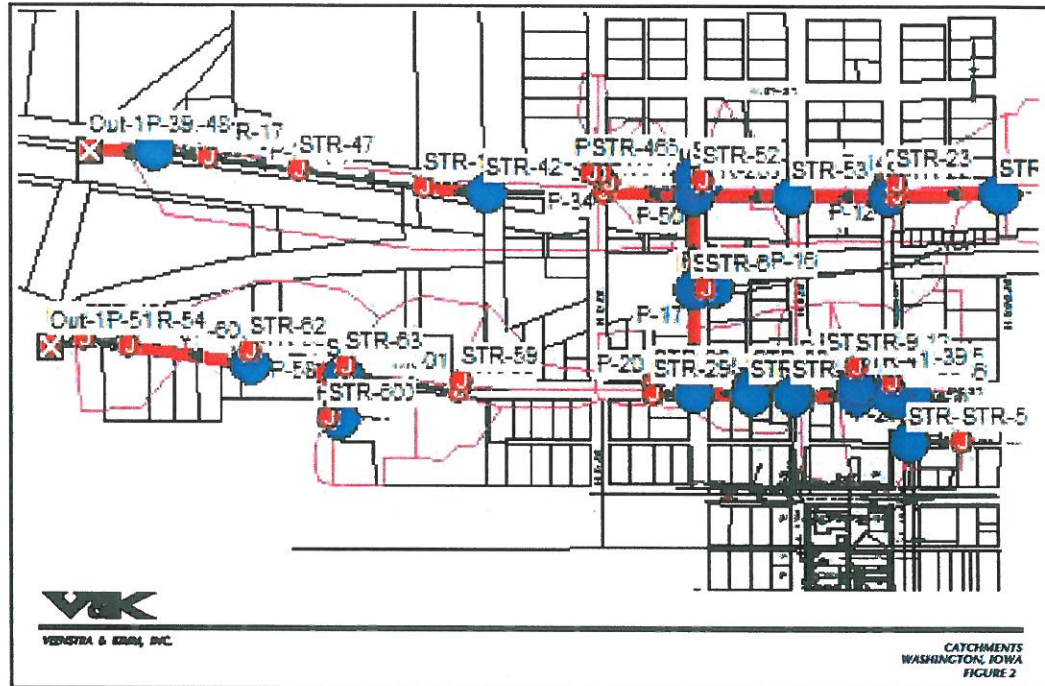
The storm pipe located along N. C Avenue carries the flow from West 3<sup>rd</sup> Street to 5<sup>th</sup> Street through 15-inch storm pipe.

The longest storm pipe flow path for the 5<sup>th</sup> Street Basin is approximately seven (7) tenths of a mile and runs from STR. 5 to the outfall structure on 5<sup>th</sup> street, shown in Figure 3.

The second basin, hereinafter referred to as 3<sup>rd</sup> Street Basin, consists of 9 catchments and 12.6 acres of residential and industrial area. The basin consists of approximately 12 storm structures, including area, curb, and modified manhole intakes, and storm pipes, ranging in size from 24-inch to 15-inch. The storm pipe limit of the 3<sup>rd</sup> Street Basin is along 3<sup>rd</sup> Street west of N. D Avenue to the outflow ditch located west of N. H Avenue.

The longest storm pipe flow path for the 3<sup>rd</sup> Street Basin runs approximately three (3) tenths of a mile and flows from STR. 59 to the outfall structure on 3<sup>rd</sup> Street, shown in Figure 3.

Figure 3 - System Map



## Soil Conditions

Veenstra & Kimm, Inc. identified the soil on the project site, according to Soil Survey of Washington County, Iowa on the United States Department of Natural Resources Soil Website. (See Appendix A)

The soil is defined as:

280-Mahaska Silty Clay Loam, 05 to 2 percent slope, Moderately Eroded Class C/D

## Contributing Off-Site Drainage

This study does not include any additional drainage basins.

## Areas within Floodway or Floodplain Boundaries

The site is located within a 100-year floodplain at 3<sup>rd</sup> Street and N. H Avenue. (See Appendix B)



## Run off Analysis

### Watershed Area

Appendix C contains a map illustrating the Washington 3<sup>rd</sup> and the 5<sup>th</sup> Street Catchments. Table 1.1 details the drainage catchments of both basins.

**Table 1.1: Hydrology Summary 3<sup>rd</sup> and 5<sup>th</sup> Street Basin**

Washington 3rd and 5th Street Drainage Catchment									
Catchment #	Size (ac)	Land Use (sf)	Impervious	Watershed		Runoff Coefficient	Composite	5yr	5yr
			Area	Length	TOC		Runoff	Volume	Runoff
			(sf)	(ft)	(min)		Coefficient	(cu. ft)	(cfs)
5th Street Basin									
1	1	R	0.1	376	96	0.55	0.59	0.91	5,247
2	1.15	R	0.26	221	94	0.55	0.64	1.154	6,508
3	0.18	R	0.18	80	57	0.55	0.66	0.264	903
7	0.9	R	0.1	371	120	0.55	0.59	0.696	5,008
8	0.26	R	0.05	177	11	0.55	0.62	0.847	559
9	0.91	R	0.1	362	98	0.55	0.59	0.817	4,802
10	0.48	R	0.02	275	29	0.55	0.57	0.921	1,602
11	0.4	R	0.02	354	42	0.55	0.57	0.617	1,554
12	3.42	R/I	1.2	551	21	0.55	0.69	27.23	34,316
13	0.43	R/I	0.3	289	27	0.55	0.83	2.566	462
14	0.73	R/I	0.17	368	182	0.55	0.64	0.452	4,934
15	0.29	R/I	0.12	202	21	0.55	0.72	0.832	1,049
16	1.05	R/I	0.76	369	37	0.55	0.83	2.547	5,654
19	0.37	R/I	0.25	164	3.3	0.55	0.82	2.181	393
20	0.56	R/I	0.48	198	7.6	0.55	0.9	2.939	1,411
21	0.7	R/I	0.55	284	53	0.55	0.86	1.403	4,463
22	0.96	R/I	0.85	354	42	0.55	0.9	2.337	5,889
23	0.58	R/I	0.44	305	38	0.55	0.85	1.418	3,232
24	0.61	R/I	0.49	199	34	0.55	0.9	1.687	3,441
25	0.75	R/I	0.39	203	16	0.55	0.76	2.579	2,476
26	1.54	R/I	1.06	368	60	0.55	0.83	2.744	9,878
27	1.84	R/I	0	287	21	0.55	0.55	4.035	5,054
29	1.54	R	0	318	36	0.55	0.55	2.516	5,435
30	1.4	R	0	433	37	0.55	0.55	2.25	4,995
31	0.38	R	0	282	21	0.55	0.55	0.853	1,024
32	0.7	R	0	290	3	0.55	0.55	4.781	861
33	0.5	R/I	0	205	2	0.55	0.55	3.586	430
34	1.04	R/I	0	378	5	0.55	0.55	6.491	1,947
35	1.52	R/I	0	434	6	0.55	0.55	9.1	3,276
36	1.17	R/I	0.87	422	6	0.55	0.85	6.267	2,256
37	1.43	R/I	0.7	382	4	0.55	0.74	7.264	1,743
38	0.96	R/I	0.38	362	37	0.55	0.72	2.02	4,484
39	0.13	R/I	0.5	126	2	0.55	0.67	0.658	79
40	0.83	R	0	375	32	0.55	0.55	1.453	2,789
41	0.35	R	0	192	9	0.55	0.55	1.123	539
3rd Street Basin									
W-1	1.33	R	0.19	346	49	0.55	0.67	2.186	6,427
W-2	0.52	R	0.14	410	43	0.55	0.66	0.915	2,360
W-3	1.26	R	0.4	550	4	0.55	0.69	5.968	1,432
W-4	1.92	R	0.55	322	41	0.55	0.66	3.637	8,947
W-5	3.2	R	0.64	405	37	0.55	0.63	5.891	13,079
W-6	0.33	R	0.14	282	1.5	0.55	0.72	1.794	215
W-7	2.09	R/I	0.4	635	61	0.55	0.62	2.782	10,014
W-8	0.3	R	0.1	201	24	0.55	0.68	0.76	1,095

## Time of Concentration

The time of concentration calculations were determined utilizing the TR-55 method as part of AutoCAD's Storm Analysis program. This method assumes there is 100 foot maximum of sheet flow followed by a 1,000 foot maximum of shallow concentrated flow. The remainder flows through channel flow.

## Precipitation Model

A rainfall intensity-duration-frequency (IDF) curve was used for the precipitation model to calculate the peak discharge. The IDF curve was calculated using the rainfall amounts for Iowa given in the ISMM 2B-2 for Region # 9. (See Appendix D)

## Summary of Analysis

The Iowa Stormwater Management Manual recommends the storm sewer design to be able to capture and carry the 5-year storm frequency event. Storm events larger than the 5-year event use the street to carry excess flow.

Evaluation of inlet structure capacity is necessary to determine if the opening restricts the amount of flow that can enter the storm sewer. Three types of structure inlets, curb at low point (SW-507), single grate inlet (SW-501), and special manhole inlet (Neehah R-2504), were identified to be in the 3<sup>rd</sup> and 5<sup>th</sup> Street Basins.

The Iowa Stormwater Management Manual methods established the inlet capacities. (See Appendix G)

Low Point Intakes are single open-throat intakes, small box, referred to as SW-507 by SUDAS in Section 6010, Part 2 of the Standard Specifications. Low point intake capacity is calculated using Equation 1. A reduction factor of 0.7, due to partial clogging with debris, is applied when calculating the maximum amount of flow, as shown in Equation 2.

Equation 1 – Capacity for Standard Single Type Intake at Low Point

$$Q = 12H^{(\frac{3}{2})}$$

$H$  = Total head in feet ( $D+A$ )

$A$  = intake depression (3-inches or 0.25 feet)

$D$  = Depth of flow in gutter at face of curb

$Q$  = Gutter flow (cfs)

Equation 2 – Reduction Factor

$$Q_R = Q * R_f$$

The maximum amount of flow a single 48-inch intake opening can allow 5.46 cubic feet per second. (See Appendix G)

Single Grate Intakes are single open-throat intakes along with a single grate inlet on grade, referred to as SW-501 by SUDAS in Section 6010 of the Standard Specifications. Equation 3 calculates its capacity. A reduction factor of 0.9 is applied, when calculating the maximum amount of flow. The maximum amount of flow a single grate inlet on continuous grade can allow is 7.0 cubic feet per second. (See Appendix G)

Equation 3 – Capacity for Grate Type Inlet on a Continuous Grade

$$Q = K \left( d^{\frac{5}{3}} \right) (R_f)$$

$d$  = Depth of flow in gutter at face of curb

$R_f$  = Reduction factor

$Q$  = Gutter flow (cfs)

Special Manhole Inlets are single 24-inch grate openings on grade, referred to as R-2504 G by Neenah. Equation 4 calculates their capacity. The maximum amount of flow a special manhole inlet can allow is 4.5 cubic feet per second. (See Appendix G)

Equation 4 – Capacity for Special Manhole Neenah R-2504 G

$$Q = 0.6A\sqrt{2gh}$$

$A$  = Free open area of grate in sq.ft.

$g$  = 32.2 (feet per sec/sec)

$h$  = head in feet

The inlet openings were evaluated with Auto Cad Civil 3D 2014 Storm and Sanitary Analysis. This analysis determined that for any flow above the pre-calculated capacity flow per inlet would cause the system to flood and force stormwater to pond and potentially overtop the curb.

The inlets in the study are adequate to handle the catchments flows for the 5-year storm frequency event of the 3<sup>rd</sup> and 5<sup>th</sup> Street Basins.

Once the capacity of the inlets with respect to flows for the 3<sup>rd</sup> and 5<sup>th</sup> Street Basins was identified, Veenstra & Kimm, Inc. evaluated the capacity of the remaining storm system with Auto Cad Civil 3D 2014 Storm and Sanitary Analysis. Table 2.1 for the 5<sup>th</sup> Street Basin and Table 2.2 for the 3<sup>rd</sup> Street Basin show the results.

Table 2.1 Pipe Segment Analysis-5<sup>th</sup> Street Basin

5 <sup>th</sup> Street Basin						
	Inflow from Inlet	Inflow from upstream pipe	5yr Design Capacity (cfs)	5yr Peak Flow Analysis (cfs)	5 yr Additional Capacity (cfs)	5 yr Max/design flow ratio
Segment						
P-3	3.11	0	0.62	0.62	Surcharged	1
P-14	2.07	0	3.94	2.065	1.87	0.53
P-13	2.34	2.685	11.95	6	5.95	0.5
P-12	0.27	0.26	3.6	0.26	3.33	0.07
P-43	1.40	6	4.15	4.15	Surcharged	1
P-42	5.12	4.15	7.28	7.28	Surcharged	1
P-40	0.85	0	0.68	0.67	Surcharged	1
P-41	0.35	0	0.9	0.35	0.52	0.4
P-41 (1)	0	1.02	0.85	0.85	Surcharged	1
P-11	0.35	0.85	8.76	1.2	7.56	0.14
P-10	2.55	8.48	31.58	11.03	20.56	0.35
P-36	0.69	15.95	9.28	9.28	Surcharged	1
P-35	0.62	0	7.42	0.62	6.82	0.08
P-34	0.92	0.62	15.04	1.54	13.5	0.1
P-33	0.82	1.54	10.98	2.36	8.63	0.21
P-32	3.02	11.64	15.04	14.65	0.39	0.97
P-37	4.5	14.65	13.78	13.78	Surcharged	1
P-37 (1)	4.5	13.78	37.8	18.26	9.53	0.66
P-38	4.5	18.26	22.76	22.76	7.71	0.75
P-38 (1)	4.5	22.78	43.69	27.26	16.41	0.62
P-39	4.5	27.26	23.56	23.56	Surcharged	1
P-44	2.42	0	2.59	2.42	0.16	0.94
P-31	2.35	2.42	1.89	1.89	Surcharged	1
P-27	4.5	0	7.78	4.5	3.28	0.58
P-28	6.65	9.67	0.91	0.91	Surcharged	1
P-29	2.42	0.91	1.29	1.29	Surcharged	1
P-30	3.25	0	3.77	3.25	0.53	0.86
P-25	2.42	4.54	4.33	4.33	Surcharged	1
P-47	3.25	0	0.22	0.22	Surcharged	1
P-48	2.39	0	0.2	0.2	Surcharged	1
P-46	0	0.42	2.41	0.42	1.99	0.21
P-9	3.59	4.75	2.49	2.49	Surcharged	1
P-26	2.42	2.49	1.59	1.59	Surcharged	1
P-24	2.02	1.59	6.14	3.61	2.53	0.59
P-22	0.66	3.61	2.66	2.66	Surcharged	1
P-21	5.49	0	3.98	3.98	Surcharged	1
P-23	0.73	6.64	4.7	4.7	Surcharged	1
P-20	2.69	0	7.81	2.69	5.1	0.35
P-18	0.96	2.69	3.88	3.66	0.21	0.95
P-17	0.73	8.36	4.92	4.92	Surcharged	1
P-16	1.37	0	0.52	0.52	Surcharged	1
P-15	5.41	0	10.15	5.41	4.74	0.53
P-50	0	5.93	4.92	4.92	Surcharged	1

Table 2.2 Pipe Segment Analysis-3<sup>rd</sup> Street Basin

3 <sup>rd</sup> Street Basin						
	Inflow from Inlet	Inflow from upstream pipe	5yr Design Capacity (cfs)	5yr Peak Flow Analysis (cfs)	5 yr Additional Capacity (cfs)	5 yr Max/design flow ratio
Segment						
P-57	2.19	0	3.67	2.19	1.49	0.59
P-56	0.92	2.19	6.59	3.48	3.48	0.47
P-61	2.78	0	9.16	2.78	6.39	0.30
P-55	5.97	6.26	5.89	5.89	Surcharged	1
P-5	3.64	0	7.34	3.64	2.76	0.57
P-58	0.76	3.64	2.04	2.04	Surcharged	1
P-54	0	7.93	12.03	7.93	4.1	0.66
P-60	5.89	0	19.73	5.89	13.84	0.3
P-53	1.79	13.82	8.76	8.76	Surcharged	1
P-52	0	8.76	55	8.76	46.24	0.15
P-51	3.56	8.76	23.5	8.76	14.75	0.37

The existing system has some trouble areas around 3<sup>rd</sup> Street. Multiple pipe segments are running at below minimum slopes and even slopes in the opposite direction of intended flow. Veenstra and Kimm, Inc. modified these pipe segments, with the minimum slopes per the Iowa Stormwater Management Manual along with correcting the proper direction of flow for modeling purposes. Table 2.3 illustrates the results.

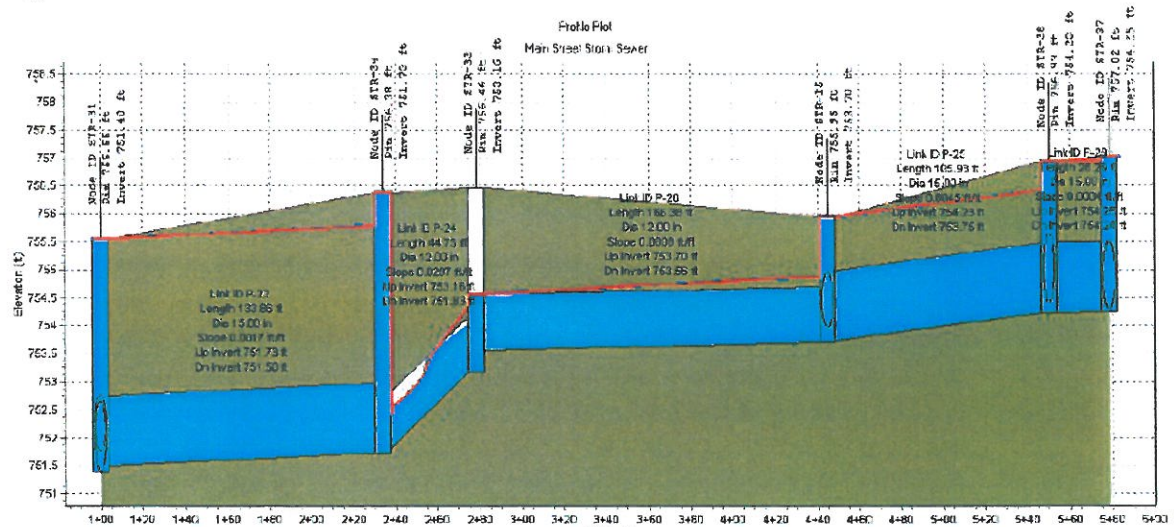
Table 2.3 Pipe Segment Analysis-Problem Segments

	Problem Identified	Corrective Action
Segment		
P-47	Reverse Flow	Lowered Outlet
P-48	Reverse Flow	Lowered Outlet
P-29	Reverse Flow	Lowered Outlet
P-14	Reverse Flow	Lowered Outlet
P-53	Below Minimum Grade	Lowered Outlet



Due to the periodic reduction in pipe size and limited capacity of certain pipes, the system tends to cause stormwater to bottleneck resulting in surcharge. This causes stormwater to backup and results in the surcharge of the inlets for the 5-year storm frequency. An example of this for the 3<sup>rd</sup> and 5<sup>th</sup> Street Basin is between structure STR-37 and STR-31, where a 15-inch storm pipe is reduced to a 12-inch storm pipe then up sized back to a 15-inch storm pipe, shown in Figure 4.

Figure 4 – Profile Plot



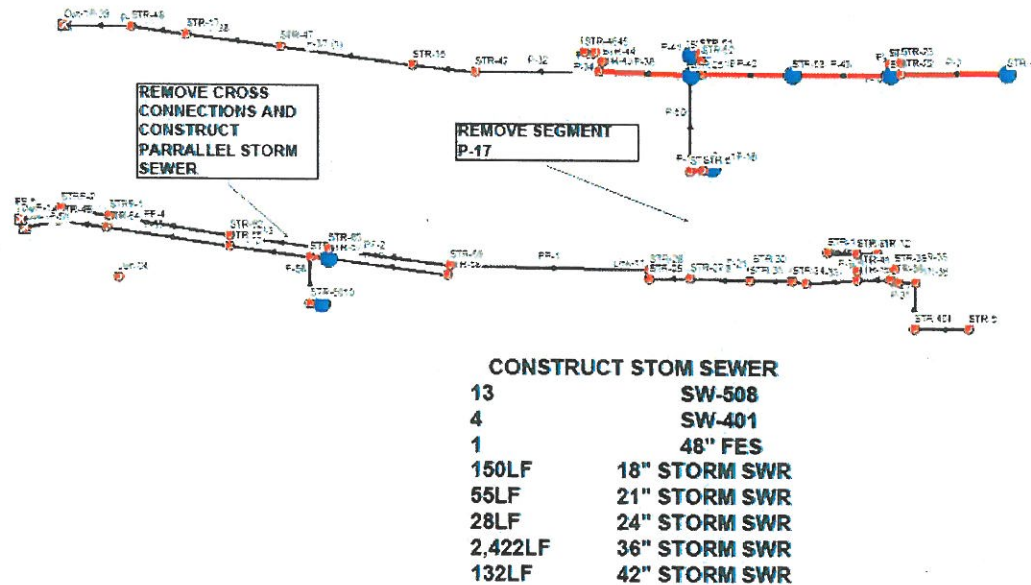
## Recommendations

### 5-Year Storm Frequency Event – Option 1 - 3<sup>rd</sup> Street Routing

Due to the large amounts of storm water entering the current system around 3<sup>rd</sup> Street for the 5<sup>th</sup> Street Basin, Veenstra & Kimm, Inc. proposes to separate 3<sup>rd</sup> Street Storm from 5<sup>th</sup> Street Storm by removing Pipe Segment P-17. This will reduce the amount of stormwater entering 5<sup>th</sup> Street storm sewer along with removing the extremely long run time it takes the stormwater to travel through the system to the exit. All the structures located in the eastern section along 3<sup>rd</sup> Street will need to be reconstructed to proper sizes, slopes, and direction of flow. Additionally, new inlets and a parallel storm pipe along the north side of 3<sup>rd</sup> Street will be required to allow the stormwater to flow and daylight into the existing ditch west of N. H Avenue as shown in Figure 5.

By constructing this proposed storm sewer, the problems along East 3<sup>rd</sup> Street will be resolved. The modeling shows capacity issues at the west end of East 3<sup>rd</sup> Street but there are no known complaints from residents. This situation will be improved with the new storm line but not eliminated. The modeling also shows capacity issues at the east end of 5<sup>th</sup> Street. This will be improved with the removal of 3<sup>rd</sup> Street from the 5<sup>th</sup> Street storm sewer but will still be over capacity. According to communications with City of Washington personnel, residential complaints regarding storm flooding in these areas are minimal so no improvements are recommended at the east end of E. 5<sup>th</sup> Street.

Figure 5 – Option 1 - 3<sup>rd</sup> Street Routing

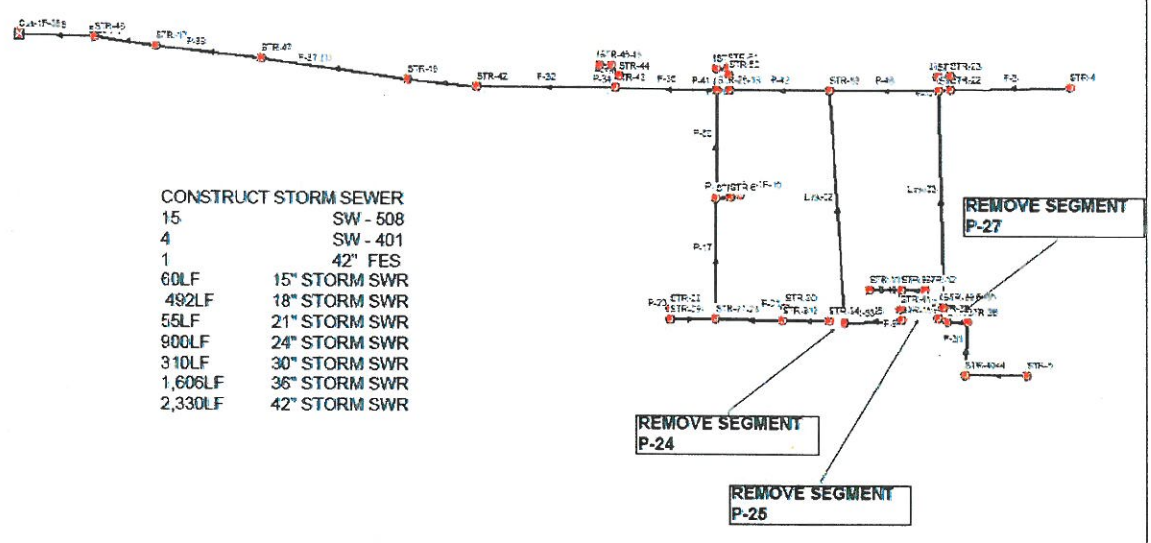


## 5-Year Storm Frequency Event - Option 2 - 5<sup>th</sup> Street Routing

To properly carry storm water along 5<sup>th</sup> Street, improvements are needed. Veenstra & Kimm, Inc. proposes to construct new storm sewer runs along N. Marion Ave and N. B Avenue by removing pipe segments and reconstructing the storm sewer along N. D Avenue and 5<sup>th</sup> Street. This will create the capacity needed to carry the storm water away from the 5<sup>th</sup> Street Basin to the outfall located west of N. F Avenue along 5<sup>th</sup> Street, shown in Figure 6.

By reconstructing this storm sewer, all the identified problems listed above for the 5<sup>th</sup> Street Basin will be corrected.

Figure 6 – Option 2 - 5<sup>th</sup> Street Routing



After modeling both options and evaluating cost benefits, Veenstra & Kimm, Inc.'s recommendation is to construct the 3<sup>rd</sup> Street routing option. The issues indentified in this report along 5<sup>th</sup> Street are not currently causing problems or complaints from Washington residents. The cost of the 3<sup>rd</sup> Street routing option is shown in Table 3.1

Table 3.1 Option 1 - 3<sup>rd</sup> Street Routing Cost Opinion.

No.	Description	Unit	Unit Price	Quantity	Extended Price
1	EXCAVATION, CL 13, RDWY+BORROW	CY	\$25.00	670	\$16,750.00
2	EXCAVATION, CL 10, CHANNEL	CY	\$25.00	3,175	\$79,375.00
3	TOPSOIL, STRIP, SALVAGE+SPREAD	CY	\$15.00	317	\$4,755.00
4	MODIFIED SUBBASE	CY	\$25.00	685	\$17,125.00
5	STD/S-F PCC PAV'T, CL C CL 3, 7"	SY	\$60.00	3444	\$206,640.00
6	SUBDRAIN, STD, NON-PERFORATED, 6"	LF	\$1,000.00	15	\$15,000.00
7	SUBDRAIN OUTLET (RF-19C)	EACH	\$26.00	26	\$676.00
8	HMA (100K ESAL) B-I-S, 1/2", NO FRIC	Tons	\$180.00	40	\$7,200.00
9	MANHOLE, STORM SWR, SW-401, 48"	EACH	\$4,000.00	4	\$16,000.00
10	INTAKE, SW-508	EACH	\$4,000.00	13	\$52,000.00
11	APRON, CONC, 48"	EACH	\$1,750.00	1	\$1,750.00
12	STORM SWR G-MAIN,TRENCHED, RCP 2000D,18"	LF	\$50.00	150	\$7,500.00
13	STORM SWR GRAVITY MAIN, TRENCHED,PVC,21"	LF	\$75.00	55	\$4,125.00
14	STORM SWR GRAVITY MAIN, TRENCHED,PVC,24"	LF	\$70.00	28	\$1,960.00
15	STORM SWR G-MAIN,TRNCHLESS,RCP 2000D,30"	LF	\$80.00	272	\$21,760.00
16	STORM SWR G-MAIN,TRENCHED, RCP 2000D,36"	LF	\$90.00	2,422	\$217,980.00
17	STORM SWR G-MAIN,TRENCHED, RCP 2000D,42"	LF	\$110.00	132	\$14,520.00
18	SILT FENCE	LF	\$3.00	1000	\$3,000.00
19	RMVL OF SILT FENCE	LF	\$3.00	1000	\$3,000.00
20	MULCH, BONDED FIBER MATRIX	LS	\$5,000.00	1	\$5,000.00
21	MOBILIZATION	LS	\$60,000.00	1	\$60,000.00
22	TRAFFIC CONTROL	LS	\$15,000.00	1	\$15,000.00
23	CONSTRUCTION SURVEY	LS	\$15,000.00	1	\$15,000.00

Subtotal		\$786,116.00
Contingency	15%	<u>\$117,900.00</u>

<b>Construction Total</b>		<b>\$904,100.00</b>
---------------------------	--	---------------------



**CITY OF WASHINGTON, IOWA  
WASHINGTON, IOWA  
WEST 5<sup>TH</sup> STREET WATER MAIN**

**NOTICE OF PUBLIC HEARING AND INVITATION TO BID**

Notice is hereby given that the City Council of the City of Washington, Iowa, will meet at the Council Chambers in the old public library at 120 East Main Street, Washington, Iowa, at 6:00 p.m. on October 6, 2015 at which time and place the City Council will hear objections to the proposed plans, specifications, form of contract, and estimated cost for the West 5<sup>th</sup> Street Water Main project.

Sealed Bids for the construction of the West 5<sup>th</sup> Street Water Main will be received, by City of Washington, Iowa, at the office of the City Clerk at City Hall, 215 East Washington Street, Washington, Iowa, until 2 pm local time on September 29, 2015, at which time bids will be publically opened and read aloud at City Hall. All bids received after the deadline for submission of bids as stated herein shall not be considered and shall be return to the late bidder unopened. Contractor assumes all risk associated with delivery of his or her bid to the office of the city clerk prior to the specified time deadline.

The Project consists of constructing a new water main along West 5<sup>th</sup> Street from Highway 1 to West 3<sup>rd</sup> Street, and then through an easement in a row-cropped field to a connection near the new North Water Tower, which is currently under construction. The project includes providing approximately 4,870 lineal feet of new 8-inch diameter, C900 PVC water main for potable water distribution. Also included are valve, hydrants, piping accessories and associated site work along the water main alignment.

All bids shall be submitted to the City Clerk of Washington, Iowa on or before the time set herein for the bid opening. Bids shall be made on the Proposal Form furnished by the City of Washington, in a sealed envelope labeled or marked as required by the Instructions to Bidders.

Bids will be received for a single prime Contract. Bids shall be on a lump sum and unit price basis, with additive alternate bid items as indicated in the Bid Form. Each proposal must be accompanied either by a cashier's check or certified check in the amount of five percent (5%) drawn on an Iowa bank or a bank chartered under the laws of the United States, a Bid Bond or credit union certified share draft in the amount of five percent (5%) of the proposal, drawn on a credit union in Iowa or chartered under the laws of the United States and filed in an envelope separate from the one containing the proposal, made payable to the City of Washington, Iowa, and said check or draft may be cashed or the Bid Bond declared forfeited by the City of Washington, Iowa as liquidated damages in the event the successful bidder fails to enter into a contract within fifteen (15) days of the Notice of Award and post bond satisfactory to the City insuring the faithful fulfillment of the contract and maintenance of said improvements as required by law and the Specifications.

Payment to the Contractor for said construction will be made in cash from the following sources: Cash from any fund of City of Washington, Iowa, which may be legally used for such purposes; proceeds derived from the sale and issuance of Utility Revenue Bonds, or Federal or State grants or loans.

The Contractor will be paid each month Ninety-five Percent (95%) of the Engineer's Estimate of the value of work completed at the end of the preceding month. Final payment will be made no sooner than thirty (30) days after completion of the work and acceptance by the Owner.

The City does hereby reserve the right to reject any or all bids, to waive informalities, and to enter into such contract, or contracts, as it shall deem to be in the best interest of the City.

The City of Washington reserves the right to defer acceptance of any bid for a period not to exceed sixty (60) days after receipt of bids, and no bid may be withdrawn during this period.

The work under the proposed contract shall commence within thirty (30) days of the written "Notice to Proceed." The work shall be substantially completed by September 30, 2016, and completed and ready for final payment by October 31, 2016, subject to any changes granted by the Owner.

Iowa law provides that on public improvements a resident bidder shall be allowed preference as against a nonresident bidder from a state or foreign country which gives or requires a preference to bidders from that state

or foreign country. The preference so allowed shall be equivalent to the preference given or required by the state or foreign country in which the nonresident bidder is a resident.

By virtue of statutory authority, a preference will be given to products and provisions grown and coal produced within the State of Iowa, and to Iowa domestic labor.

Each bidder shall accompany its bid with bid security as defined in Code of Iowa Section 26.8. Each successful bidder shall be required to furnish a corporate surety bond in an amount equal to one hundred percent (100%) of its contract price. Said bond to be issued by a responsible surety approved by the City Council and shall guarantee the faithful performance of the contract and the terms and conditions therein contained and shall guarantee the prompt payment of all material and labor, and protect and save harmless the City from claims and damages of any kind caused by the operations of the contract and shall also guarantee the maintenance of the improvement in good repair for a period of two (2) years from and after the completion and acceptance by the City Council. Out-of-state bidders shall be prepared to submit an Out-of-State Contractor Bond to the Iowa Division of Labor in accordance with Chapter 91C of the Code of Iowa.

The Issuing Office for the Bidding Documents is: FOX Engineering, 414 South 17<sup>th</sup> Street, Ames, Iowa 50010, and the contact person is Mitch Holtz, P.E., [msh@foxeng.com](mailto:msh@foxeng.com), (515) 233-0000. Prospective Bidders may examine the Bidding Documents at the Issuing Office on Mondays through Fridays between the hours of 8 am to 5 pm, local time, and may obtain copies of the Bidding Documents from the Issuing Office as described below. Bidding Documents also may be examined at the office of the City Clerk, City Hall, 215 East Washington Street, Washington, Iowa, on Mondays through Fridays between the hours of 8 am to 5 pm or online using the bid document service by QuestCDN.

Printed copies of the Bidding Documents may be obtained from the Issuing Office, during the hours indicated above, upon payment of a deposit of \$30 for each set. Bidders who return full sets of the Bidding Documents in good condition (suitable for re-use) within 14 days after the Award of Contract will receive a full refund. Checks for Bidding Documents shall be payable to FOX Engineering. Upon receipt of the bidding document deposit indicated, the Issuing Office will transmit the Bidding Documents by hand or via delivery service. The date that the Bidding Documents are transmitted by the Issuing Office will be considered the Bidder's date of receipt of the Bidding Documents. Partial sets of Bidding Documents will not be available from the Issuing Office. Neither Owner nor Engineer will be responsible for full or partial sets of Bidding Documents, including Addenda if any, obtained from sources other than the Issuing Office.

Bidding Documents may be accessed online by registering online with QuestCDN at [www.questcdn.com](http://www.questcdn.com). Following registration, complete sets of Bidding Documents may be downloaded from the website as portable document format (PDF) files. Bidders must input the Quest project cost number 4083127 on the website's search page. Please contact [QuestCDN.com](http://QuestCDN.com) at 952-233-1632 or [info@questcdn.com](mailto:info@questcdn.com) for assistance in free membership registration, downloading, and printing digital project information. Website registration is necessary to ensure that prospective bidders are placed on the plan holders list and remain informed of addendum and other essential communications prior to the bid date. If the prospective bidder has a concern about the validity of the digital information downloaded from [www.questcdn.com](http://www.questcdn.com), then prospective bidder shall access the paper copies on file at the Owner's or the Engineer's office to verify the information in question.

Owner: City of Washington, Iowa  
By: Illa Earnest  
Title: City Clerk  
Date: September 22, 2015

RESOLUTION NO. \_\_\_\_\_

**A RESOLUTION ADOPTING PLANS, SPECIFICATIONS,  
FORM OF CONTRACT, AND ESTIMATE OF COST  
FOR WEST 5<sup>TH</sup> STREET WATER MAIN**

WHEREAS, FOX Engineering Associates, Inc., has prepared plans, specifications, form of contract and estimate of cost for the construction of certain public improvements described in general as "West 5<sup>th</sup> Street Water Main"; and

WHEREAS, notice of hearing on plans, specifications, form of contract, and estimate of cost for said public improvements was published as required by law:

NOW, THEREFORE, BE IT RESOLVED BY THE CITY COUNCIL OF THE CITY OF WASHINGTON, IOWA:

Section 1. That the plans, specifications, form of contract, and estimate of cost are hereby approved as the plans, specifications, form of contract, and estimate of cost for said public improvements, as described in the preamble of this Resolution.

PASSED AND APPROVED, this 6<sup>th</sup> day of October, 2015.

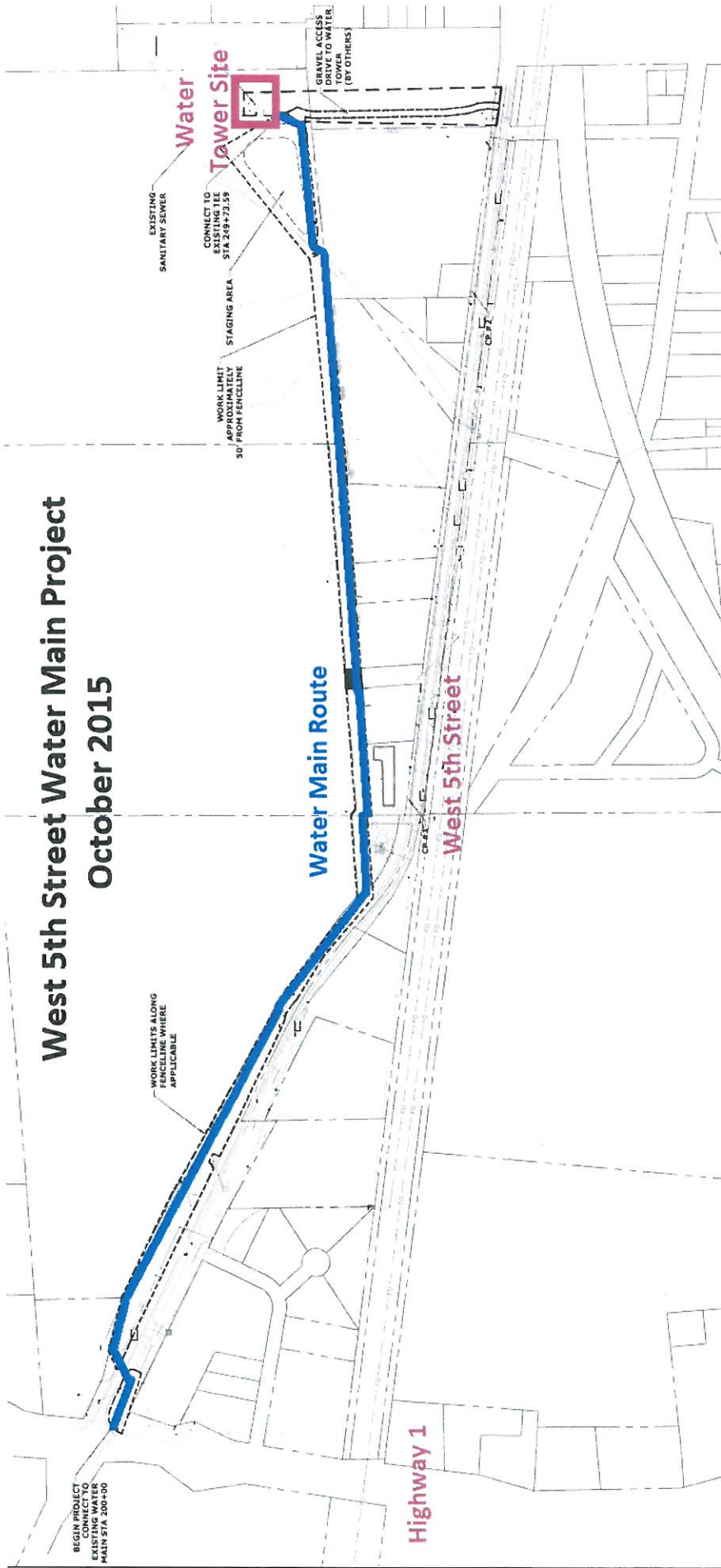
\_\_\_\_\_  
Sandra Johnson, Mayor

ATTEST:

\_\_\_\_\_  
Illa Earnest, City Clerk



# West 5th Street Water Main Project October 2015





September 30, 2015

**Mayor & City Council**

City of Washington  
215 E. Washington Street  
Washington, Iowa 52353

**West 5<sup>th</sup> Street Water Main  
Recommendation of Award**

*FOX Ref No: 3424-15A.440*

Dear Mayor and City Council:

The City of Washington received bids on September 29, 2015 for the **West 5<sup>th</sup> Street Water Main Project**. The Project consists of constructing a new water main along West 5th Street from Highway 1 to West 3rd Street, and then through an easement in a row-cropped field to a connection near the new North Water Tower, which is currently under construction. The project includes providing approximately 4,870 lineal feet of new 8-inch diameter, C900 PVC water main for potable water distribution. Also included are valve, hydrants, piping accessories and associated site work along the water main alignment.

The City received 11 bids on the project. The Engineer's opinion of probable construction cost was \$326,190.00. The bids ranged from a high bid of \$329,127.50 to a low bid of \$218,175.00. A Bid Tabulation Summary is enclosed for your reference.

Dave Schmitt Construction Co. of Cedar Rapids, IA submitted the low bid of **\$218,175.00**. The low bid is \$108,015.00 below the Engineer's opinion (33% below).

Dave Schmitt Construction performs much of their work in eastern and southeastern Iowa and specializes in excavating, grading, site utilities, sewer jetting/inspection/repair, and manhole rehabilitation. Dave Schmitt Construction has worked for other area communities including Hills, Cedar Rapids, North Liberty, and Coralville in addition to others.

FOX contacted Dave Schmitt Construction to discuss their bid, schedule, and similar projects that they have completed. Dave Schmitt Construction believes their bid is reasonable and has found no errors. Dave Schmitt Construction believes the substantial (September 30, 2016), and final (October 31, 2016) completion dates will give enough time for the work to be completed. They've stated that if the weather cooperates, they may be able to begin construction this year.

Dave Schmitt Construction plans to utilize subcontractors to complete some of the work as follows:

- Erosion Control & Seeding
- Traffic Control
- Compaction Testing

---

To evaluate their Bid we discussed their current projects and reviewed their performance on previous projects. The firm has a history of satisfactory performance on similar projects in Iowa. Based on these investigations, we believe Dave Schmitt Construction has the practical knowledge of the work, adequate equipment and personnel, sufficient schedule, and financial resources to complete the work.

Therefore, FOX recommends that the West 5<sup>th</sup> Street Water Main Project be awarded to Dave Schmitt Construction Company for their Total Bid of \$218,175.00.

We believe this represents the lowest responsive, responsible bid for the project and is in the best interests of the project. Prior to the City of Washington approving the contract, the City's insurance counsel should review the contractor's insurance certificates and performance and maintenance bonds for conformance with the City of Washington requirements.

According to bidding documents, the Council has the following options:

- Option 1: Award the project to Dave Schmitt Construction Company for \$218,175.00
- Option 2: Reject all bids

We have enclosed the Notice of Award for your use. If approved, please sign and return to FOX Engineering. FOX will then execute the contract documents. Please contact us with any questions or comments regarding this recommendation.

Very truly yours,  
FOX Engineering Associates, Inc.

*Mitch Holtz, P.E.*

Mitch Holtz, P.E.

Enclosures: *Bid Tab*  
*Notice of Award*

CC: *Ben Hosch, Dave Schmitt Construction Company*

BID TABULATION

West 5th Street Water Main  
Washington, Iowa

BID DATE: September 29, 2015  
FOX PN 3424-15A

CONTRACTORS:				Engineer's Opinion Probable Cost		Dave Schmitt Construction Co. 250 50th Ave SW Cedar Rapids, IA 52404		Ricklets Excavating Ltd. 12536 Buffalo Rd Anamosa, IA 52205		SubCo LLC PO Box 1639 Muscatine, IA 52761	
ITEM NO.	CHECK OR BID BOND	DESCRIPTION	QTY	UNITS	UNIT PRICE	TOTAL PRICE	UNIT PRICE	TOTAL PRICE	UNIT PRICE	TOTAL PRICE	TOTAL PRICE
DIVISION 1 - GENERAL											
1.1		MOBILIZATION	LS	1	\$20,000.00	\$20,000.00	\$12,400.00	\$10,000.00	\$10,000.00	\$7,000.00	\$7,000.00
1.2		TRAFFIC CONTROL	LS	1	\$1,000.00	\$1,000.00	\$1,046.00	\$1,000.00	\$1,000.00	\$1,046.00	\$1,046.00
1.3		CONSTRUCTION CONTINGENCY (ALLOWANCE)	LS	1	\$7,000.00	\$7,000.00	\$7,000.00	\$7,000.00	\$7,000.00	\$7,000.00	\$7,000.00
1.4		SUBMITTAL EXCHANGE FEE (ALLOWANCE)	LS	1	\$2,000.00	\$2,000.00	\$2,000.00	\$2,000.00	\$2,000.00	\$2,000.00	\$2,000.00
DIVISION 2 - EARTHWORK (NOT USED)											
DIVISION 3 - TRENCH AND TRENCHLESS CONSTRUCTION											
3.1		TRENCHLESS WATER MAIN, 8-INCH RESTRAINED JOINT	LF	105	\$70.00	\$7,350.00	\$96.00	\$10,080.00	\$80.00	\$8,400.00	\$8,715.00
3.2		TRENCH FOUNDATION	TON	100	\$25.00	\$2,500.00	\$21.00	\$2,100.00	\$15.00	\$1,500.00	\$2,500.00
3.3		REPLACEMENT OF UNSUITABLE BACKFILL, TRENCH	CY	100	\$25.00	\$2,500.00	\$21.00	\$2,100.00	\$20.00	\$2,000.00	\$2,350.00
3.4		COMPACTION TESTING	LS	1	\$2,500.00	\$2,500.00	\$1,000.00	\$1,000.00	\$100.00	\$2,413.00	\$2,413.00
DIVISION 4 - SEWERS AND DRAINS											
4.1		TILE REPAIR, 4-INCH TO 10-INCH	LF	500	\$20.00	\$10,000.00	\$15.00	\$7,500.00	\$5.00	\$2,500.00	\$2,000.00
DIVISION 5 - WATER MAIN AND APPURTENANCES											
5.1		WATER MAIN, CONNECT TO EXISTING STUB	EA	1	\$1,500.00	\$1,500.00	\$1,150.00	\$1,150.00	\$600.00	\$600.00	\$500.00
5.2		TAPPING SLEEVE AND VALVE	EA	1	\$3,000.00	\$3,000.00	\$4,848.00	\$4,848.00	\$4,000.00	\$4,000.00	\$4,000.00
5.3		WATER MAIN, 8-INCH	LF	4,869	\$35.00	\$170,415.00	\$19.00	\$92,511.00	\$22.00	\$107,118.00	\$83,990.25
5.4		WATER VALVE, R/W, 8-INCH	EA	6	\$2,000.00	\$12,000.00	\$1,268.00	\$7,608.00	\$1,600.00	\$9,600.00	\$9,900.00
5.5		FIRE HYDRANT ASSEMBLY	EA	12	\$4,500.00	\$54,000.00	\$3,856.00	\$46,272.00	\$3,800.00	\$45,600.00	\$49,800.00
5.6		WATER MAIN TESTING	LS	1	\$2,000.00	\$2,000.00	\$1,000.00	\$1,000.00	\$800.00	\$900.00	\$1,900.00
DIVISION 6 - STRUCTURES FOR SANITARY AND STORM SEWERS (NOT USED)											
DIVISION 7 - PAVEMENT AND APPURTENANCES											
7.1		GRANULAR SURFACING, CLASS 'A' CRUSHED STONE, 8"	TON	20	\$30.00	\$600.00	\$23.00	\$460.00	\$17.00	\$340.00	\$430.00
DIVISION 8 - TRAFFIC SIGNALS (NOT USED)											
DIVISION 9 - SITE WORK AND LANDSCAPING											
9.1		SEEDING, FERTILIZING, MULCHING, TYPE 5	AC	5	\$1,500.00	\$7,500.00	\$800.00	\$4,000.00	\$950.00	\$4,750.00	\$14,750.00
9.2		HYDROSEEDING - TYPE 2	AC	3	\$2,500.00	\$7,500.00	\$2,400.00	\$7,200.00	\$2,900.00	\$8,700.00	\$11,760.00
9.3		SILT FENCE	LF	1000	\$3.00	\$3,000.00	\$1.80	\$1,800.00	\$1.70	\$1,700.00	\$2,750.00
9.4		TURF REINFORCEMENT MAT (TRM)	SY	1325	\$5.00	\$6,625.00	\$4.00	\$5,300.00	\$1.30	\$1,722.50	\$9,540.00
9.5		FIELD FENCE, REMOVE AND REPLACE 4-FT BARB WIRE	LF	80	\$40.00	\$3,200.00	\$10.00	\$800.00	\$10.00	\$800.00	\$480.00
TOTAL						\$326,190.00		\$218,175.00		\$220,230.50	\$224,824.25

PREPARED BY:  
FOX ENGINEERING ASSOCIATES, INC.  
AMES, IOWA



BID TABULATION

West 5th Street Water Main  
Washington, Iowa

BID DATE: September 29, 2015  
FOX PN 3424-15A

CONTRACTORS:				Engineer's Opinion Probable Cost		DeLong Construction, Inc. PO Box 488 Washington, IA 52353		KMA Trucking & Excavating, LLC 22050 277th Ave LeClaire, IA 52753		Cornerstone Excavating Inc. 1920 West Main St Washington, IA 52353	
ITEM NO.	DESCRIPTION	QTY	UNITS	UNIT PRICE	TOTAL PRICE	UNIT PRICE	TOTAL PRICE	UNIT PRICE	TOTAL PRICE	UNIT PRICE	TOTAL PRICE
CHECK OR BID BOND											
DIVISION 1 - GENERAL											
1.1	MOBILIZATION	LS	1	\$20,000.00	\$20,000.00	\$7,000.00	\$7,000.00	\$9,500.00	\$9,500.00	\$10,000.00	\$10,000.00
1.2	TRAFFIC CONTROL	LS	1	\$1,000.00	\$1,000.00	\$2,725.00	\$2,725.00	\$1,500.00	\$1,500.00	\$3,200.00	\$3,200.00
1.3	CONSTRUCTION CONTINGENCY (ALLOWANCE)	LS	1	\$7,000.00	\$7,000.00	\$7,000.00	\$7,000.00	\$7,000.00	\$7,000.00	\$7,000.00	\$7,000.00
1.4	SUBMITTAL EXCHANGE FEE (ALLOWANCE)	LS	1	\$2,000.00	\$2,000.00	\$2,000.00	\$2,000.00	\$2,000.00	\$2,000.00	\$2,000.00	\$2,000.00
DIVISION 2 - EARTHWORK (NOT USED)											
DIVISION 3 - TRENCH AND TRENCHLESS CONSTRUCTION											
3.1	TRENCHLESS WATER MAIN, 8-INCH RESTRAINED JOINT	LF	105	\$70.00	\$7,350.00	\$55.00	\$5,775.00	\$45.00	\$4,725.00	\$102.25	\$10,736.25
3.2	TRENCH FOUNDATION	TON	100	\$25.00	\$2,500.00	\$21.00	\$2,100.00	\$20.00	\$2,000.00	\$22.75	\$2,275.00
3.3	REPLACEMENT OF UNSUITABLE BACKFILL, TRENCH	CY	100	\$25.00	\$2,500.00	\$7.00	\$700.00	\$10.00	\$1,000.00	\$10.00	\$1,000.00
3.4	COMPACTION TESTING	LS	1	\$2,500.00	\$2,500.00	\$1,000.00	\$1,000.00	\$2,500.00	\$2,500.00	\$3,500.00	\$3,500.00
DIVISION 4 - SEWERS AND DRAINS											
4.1	TILE REPAIR, 4-INCH TO 10-INCH	LF	500	\$20.00	\$10,000.00	\$13.50	\$6,750.00	\$10.00	\$5,000.00	\$38.50	\$19,250.00
DIVISION 5 - WATER MAIN AND APPURTENANCES											
5.1	WATER MAIN, CONNECT TO EXISTING STUB	EA	1	\$1,500.00	\$1,500.00	\$1,200.00	\$1,200.00	\$750.00	\$750.00	\$1,250.00	\$1,250.00
5.2	TAPPING SLEEVE AND VALVE	EA	1	\$3,000.00	\$3,000.00	\$5,280.00	\$5,280.00	\$3,500.00	\$3,500.00	\$4,000.00	\$4,000.00
5.3	WATER MAIN, 8-INCH	LF	4,869	\$35.00	\$170,415.00	\$21.50	\$104,683.50	\$24.50	\$119,290.50	\$22.25	\$108,335.25
5.4	WATER VALVE, RW, 8-INCH	EA	6	\$2,000.00	\$12,000.00	\$1,500.00	\$9,000.00	\$1,250.00	\$7,500.00	\$1,250.00	\$7,500.00
5.5	FIRE HYDRANT ASSEMBLY	EA	12	\$4,500.00	\$54,000.00	\$4,485.00	\$53,820.00	\$3,400.00	\$40,800.00	\$4,250.00	\$51,000.00
5.6	WATER MAIN TESTING	LS	1	\$2,000.00	\$2,000.00	\$1,000.00	\$1,000.00	\$500.00	\$500.00	\$1,500.00	\$1,500.00
DIVISION 6 - STRUCTURES FOR SANITARY AND STORM SEWERS (NOT USED)											
DIVISION 7 - PAVEMENT AND APPURTENANCES											
7.1	GRANULAR SURFACING, CLASS 'A' CRUSHED STONE, 8"	TON	20	\$30.00	\$600.00	\$22.00	\$440.00	\$25.00	\$500.00	\$20.25	\$405.00
DIVISION 8 - TRAFFIC SIGNALS (NOT USED)											
DIVISION 9 - SITE WORK AND LANDSCAPING											
9.1	SEEDING, FERTILIZING, MULCHING, TYPE 5	AC	5	\$1,500.00	\$7,500.00	\$1,700.00	\$8,500.00	\$2,950.00	\$14,750.00	\$1,300.00	\$6,500.00
9.2	HYDROSEEDING - TYPE 2	AC	3	\$2,500.00	\$7,500.00	\$1,900.00	\$5,700.00	\$3,920.00	\$11,760.00	\$2,900.00	\$8,700.00
9.3	SILT FENCE	LF	1000	\$3.00	\$3,000.00	\$2.00	\$2,000.00	\$1.75	\$1,750.00	\$2.00	\$2,000.00
9.4	TURF REINFORCEMENT MAT (TRM)	SY	1325	\$5.00	\$6,625.00	\$7.00	\$9,275.00	\$7.20	\$9,540.00	\$4.00	\$5,300.00
9.5	FIELD FENCE, REMOVE AND REPLACE 4-FT BARB WIRE	LF	80	\$40.00	\$3,200.00	\$15.00	\$1,200.00	\$20.00	\$1,600.00	\$17.50	\$1,400.00
TOTAL					\$326,190.00		\$237,148.50		\$247,465.50		\$256,851.50

PREPARED BY:  
FOX ENGINEERING ASSOCIATES, INC.  
AMES, IOWA

BID TABULATION

West 5th Street Water Main  
Washington, Iowa

BID DATE: September 29, 2015  
FOX PN 3424-15A

CONTRACTORS:				Engineer's Opinion Probable Cost		Zinser Grading & Excavating LLC 1775 Commercial Drive Wallford, IA 52351		G&R Miller Construction PO Box 3 Washington, IA 52353		Horsfield Companies 505 East Main St Epworth, IA 52045	
ITEM NO.	DESCRIPTION	QTY	UNITS	UNIT PRICE	TOTAL PRICE	UNIT PRICE	TOTAL PRICE	UNIT PRICE	TOTAL PRICE	UNIT PRICE	TOTAL PRICE
CHECK OR BID BOND											
DIVISION 1 - GENERAL											
1.1	MOBILIZATION	LS	1	\$20,000.00	\$20,000.00	\$8,000.00	\$8,000.00	\$18,000.00	\$18,000.00	\$10,000.00	\$10,000.00
1.2	TRAFFIC CONTROL	LS	1	\$1,000.00	\$1,000.00	\$1,815.00	\$1,815.00	\$500.00	\$500.00	\$2,000.00	\$2,000.00
1.3	CONSTRUCTION CONTINGENCY (ALLOWANCE)	LS	1	\$7,000.00	\$7,000.00	\$7,000.00	\$7,000.00	\$7,000.00	\$7,000.00	\$7,000.00	\$7,000.00
1.4	SUBMITTAL EXCHANGE FEE (ALLOWANCE)	LS	1	\$2,000.00	\$2,000.00	\$2,000.00	\$2,000.00	\$2,000.00	\$2,000.00	\$2,000.00	\$2,000.00
DIVISION 2 - EARTHWORK (NOT USED)											
DIVISION 3 - TRENCH AND TRENCHLESS CONSTRUCTION											
3.1	TRENCHLESS WATER MAIN, 8-INCH RESTRAINED JOINT	LF	105	\$70.00	\$7,350.00	\$99.50	\$10,447.50	\$72.00	\$7,560.00	\$110.00	\$11,550.00
3.2	TRENCH FOUNDATION	TON	100	\$25.00	\$2,500.00	\$29.00	\$2,900.00	\$1.00	\$100.00	\$26.00	\$2,600.00
3.3	REPLACEMENT OF UNSUITABLE BACKFILL, TRENCH	CY	100	\$25.00	\$2,500.00	\$35.50	\$3,550.00	\$1.00	\$100.00	\$84.00	\$8,400.00
3.4	COMPACTION TESTING	LS	1	\$2,500.00	\$2,500.00	\$2,655.00	\$2,655.00	\$3,850.00	\$3,850.00	\$2,500.00	\$2,500.00
DIVISION 4 - SEWERS AND DRAINS											
4.1	TILE REPAIR, 4-INCH TO 10-INCH	LF	500	\$20.00	\$10,000.00	\$18.15	\$9,075.00	\$10.00	\$5,000.00	\$40.00	\$20,000.00
DIVISION 5 - WATER MAIN AND APPURTENANCES											
5.1	WATER MAIN, CONNECT TO EXISTING STUB	EA	1	\$1,500.00	\$1,500.00	\$2,795.50	\$2,795.50	\$1,800.00	\$1,800.00	\$1,200.00	\$1,200.00
5.2	TAPPING SLEEVE AND VALVE	EA	1	\$3,000.00	\$3,000.00	\$5,660.00	\$5,660.00	\$4,500.00	\$4,500.00	\$3,750.00	\$3,750.00
5.3	WATER MAIN, 8-INCH	LF	4,869	\$35.00	\$170,415.00	\$21.65	\$105,413.85	\$22.00	\$107,118.00	\$25.50	\$124,159.50
5.4	WATER VALVE, R/W, 8-INCH	EA	6	\$2,000.00	\$12,000.00	\$1,775.00	\$10,650.00	\$2,000.00	\$12,000.00	\$1,300.00	\$7,800.00
5.5	FIRE HYDRANT ASSEMBLY	EA	12	\$4,500.00	\$54,000.00	\$5,005.00	\$60,060.00	\$4,300.00	\$51,600.00	\$3,700.00	\$44,400.00
5.6	WATER MAIN TESTING	LS	1	\$2,000.00	\$2,000.00	\$4,340.00	\$4,340.00	\$2,500.00	\$2,500.00	\$1,000.00	\$1,000.00
DIVISION 6 - STRUCTURES FOR SANITARY AND STORM SEWERS (NOT USED)											
DIVISION 7 - PAVEMENT AND APPURTENANCES											
7.1	GRANULAR SURFACING, CLASS 'A' CRUSHED STONE, 8"	TON	20	\$30.00	\$600.00	\$20.00	\$400.00	\$25.00	\$500.00	\$33.00	\$660.00
DIVISION 8 - TRAFFIC SIGNALS (NOT USED)											
DIVISION 9 - SITE WORK AND LANDSCAPING											
9.1	SEEDING, FERTILIZING, MULCHING, TYPE 5	AC	5	\$1,500.00	\$7,500.00	\$980.00	\$4,900.00	\$2,500.00	\$12,500.00	\$800.00	\$4,000.00
9.2	HYDROSEEDING - TYPE 2	AC	3	\$2,500.00	\$7,500.00	\$2,640.00	\$7,920.00	\$4,400.00	\$13,200.00	\$2,400.00	\$7,200.00
9.3	SILT FENCE	LF	1000	\$3.00	\$3,000.00	\$2.00	\$2,000.00	\$3.35	\$3,350.00	\$1.80	\$1,800.00
9.4	TURF REINFORCEMENT MAT (TRM)	SY	1325	\$5.00	\$6,625.00	\$4.40	\$5,830.00	\$8.00	\$10,600.00	\$4.00	\$5,300.00
9.5	FIELD FENCE, REMOVE AND REPLACE 4-FT BARB WIRE	LF	80	\$40.00	\$3,200.00	\$27.65	\$2,212.00	\$1.00	\$80.00	\$10.00	\$800.00
TOTAL					\$326,190.00		\$259,123.85		\$263,858.00		\$268,119.50

\* Denotes Mathematical Error

PREPARED BY:  
FOX ENGINEERING ASSOCIATES, INC.  
AMES, IOWA



BID TABULATION

West 5th Street Water Main  
Washington, Iowa

BID DATE: September 29, 2015  
FOX PN 3424-15A

CONTRACTORS:				Engineer's Opinion Probable Cost		Yordi Excavating Inc 6518 Harrison Rd SW Cedar Rapids, IA 52404		K.M. King, Inc 4765 Summer St Burlington, IA 52601	
ITEM NO.	DESCRIPTION	QTY	UNITS	UNIT PRICE	TOTAL PRICE	UNIT PRICE	TOTAL PRICE	UNIT PRICE	TOTAL PRICE
CHECK OR BID BOND									
DIVISION 1 - GENERAL									
1.1	MOBILIZATION	LS	1	\$20,000.00	\$20,000.00	\$25,000.00	\$25,000.00	\$10,000.00	\$10,000.00
1.2	TRAFFIC CONTROL	LS	1	\$1,000.00	\$1,000.00	\$2,000.00	\$2,000.00	\$1,000.00	\$1,000.00
1.3	CONSTRUCTION CONTINGENCY (ALLOWANCE)	LS	1	\$7,000.00	\$7,000.00	\$7,000.00	\$7,000.00	\$7,000.00	\$7,000.00
1.4	SUBMITTAL EXCHANGE FEE (ALLOWANCE)	LS	1	\$2,000.00	\$2,000.00	\$2,000.00	\$2,000.00	\$2,000.00	\$2,000.00
DIVISION 2 - EARTHWORK (NOT USED)									
DIVISION 3 - TRENCH AND TRENCHLESS CONSTRUCTION									
3.1	TRENCHLESS WATER MAIN, 8-INCH RESTRAINED JOINT	LF	105	\$70.00	\$7,350.00	\$80.00	\$8,400.00	\$45.00	\$4,725.00
3.2	TRENCH FOUNDATION	TON	100	\$25.00	\$2,500.00	\$25.00	\$2,500.00	\$35.00	\$3,500.00
3.3	REPLACEMENT OF UNSUITABLE BACKFILL, TRENCH	CY	100	\$25.00	\$2,500.00	\$25.00	\$2,500.00	\$15.00	\$1,500.00
3.4	COMPACTION TESTING	LS	1	\$2,500.00	\$2,500.00	\$2,000.00	\$2,000.00	\$5,000.00	\$5,000.00
DIVISION 4 - SEWERS AND DRAINS									
4.1	TILE REPAIR, 4-INCH TO 10-INCH	LF	500	\$20.00	\$10,000.00	\$0.50	\$250.00	\$20.00	\$10,000.00
DIVISION 5 - WATER MAIN AND APPURTENANCES									
5.1	WATER MAIN, CONNECT TO EXISTING STUB	EA	1	\$1,500.00	\$1,500.00	\$2,000.00	\$2,000.00	\$1,000.00	\$1,000.00
5.2	TAPPING SLEEVE AND VALVE	EA	1	\$3,000.00	\$3,000.00	\$6,000.00	\$6,000.00	\$4,000.00	\$4,000.00
5.3	WATER MAIN, 8-INCH	LF	4,869	\$35.00	\$170,415.00	\$28.00	\$136,332.00	\$35.00	\$170,415.00
5.4	WATER VALVE, R/W, 8-INCH	EA	6	\$2,000.00	\$12,000.00	\$1,600.00	\$9,600.00	\$1,750.00	\$10,500.00
5.5	FIRE HYDRANT ASSEMBLY	EA	12	\$4,500.00	\$54,000.00	\$4,500.00	\$54,000.00	\$4,500.00	\$54,000.00
5.6	WATER MAIN TESTING	LS	1	\$2,000.00	\$2,000.00	\$1,500.00	\$1,500.00	\$3,000.00	\$3,000.00
DIVISION 6 - STRUCTURES FOR SANITARY AND STORM SEWERS (NOT USED)									
DIVISION 7 - PAVEMENT AND APPURTENANCES									
7.1	GRANULAR SURFACING, CLASS 'A' CRUSHED STONE, 8"	TON	20	\$30.00	\$600.00	\$35.00	\$700.00	\$50.00	\$1,000.00
DIVISION 8 - TRAFFIC SIGNALS (NOT USED)									
DIVISION 9 - SITE WORK AND LANDSCAPING									
9.1	SEEDING, FERTILIZING, MULCHING, TYPE 5	AC	5	\$1,500.00	\$7,500.00	\$2,000.00	\$10,000.00	\$3,000.00	\$15,000.00
9.2	HYDROSEEDING - TYPE 2	AC	3	\$2,500.00	\$7,500.00	\$3,000.00	\$9,000.00	\$4,000.00	\$12,000.00
9.3	SILT FENCE	LF	1000	\$3.00	\$3,000.00	\$2.50	\$2,500.00	\$2.75	\$2,750.00
9.4	TURF REINFORCEMENT MAT (TRM)	SY	1325	\$5.00	\$6,625.00	\$6.00	\$7,950.00	\$7.50	\$9,937.50
9.5	FIELD FENCE, REMOVE AND REPLACE 4-FT BARB WIRE	LF	80	\$40.00	\$3,200.00	\$30.00	\$2,400.00	\$10.00	\$800.00
					\$326,190.00		\$293,632.00		\$329,127.50

\* Denotes Mathematical Error

PREPARED BY:  
FOX ENGINEERING ASSOCIATES, INC.  
AMES, IOWA

**RESOLUTION NO. \_\_\_\_\_**

**A RESOLUTION MAKING AWARD OF CONSTRUCTION CONTRACT**

WHEREAS, the construction project known as "West 5<sup>th</sup> Street Water Main" has been designed and publicized for bid, and bids were received on September 29, 2015:

NOW, THEREFORE, BE IT RESOLVED BY THE CITY COUNCIL OF THE CITY OF WASHINGTON, IOWA:

Section 1. That the following bid for the construction of certain public improvements described in general as "West 5<sup>th</sup> Street Water Main" be and is hereby accepted, the same being the lowest responsible bid received for said work, as follows:

Contractor: \_\_\_\_\_ Dave Schmitt Construction Company \_\_\_\_\_

Amount of Bid: \_\_\_\_\_ \$218,175.00 \_\_\_\_\_

Section 2. That the Mayor and Clerk are hereby directed to execute contract with the contractor for the construction of said public improvements.

PASSED AND APPROVED, this 6<sup>th</sup> day of October, 2015.

\_\_\_\_\_  
Sandra Johnson, Mayor

ATTEST:

\_\_\_\_\_  
Illa Earnest, City Clerk

# Notice of Award

Project: <b>West 5<sup>th</sup> Street Water Main</b>	Date of Award: <b>October 6, 2015</b>
Owner: <b>City of Washington, IA</b>	Owner's Contract No.:
Engineer: <b>FOX Engineering Associates, Inc.</b>	Engineer's Project No.: <b>3424-15A</b>
Bidder: <b>Dave Schmitt Construction Company, Inc.</b>	

You are notified that your Bid dated September 29, 2015 for the above Contract has been considered. You are the Successful Bidder and are awarded a Contract for West 5<sup>th</sup> Street Water Main, Washington, IA.

Work includes: The Project consists of constructing a new water main along West 5th Street from Highway 1 to West 3rd Street, and then through an easement in a row-cropped field to a connection near the new North Water Tower, which is currently under construction. The project includes providing approximately 4,870 lineal feet of new 8-inch diameter, C900 PVC water main for potable water distribution. Also included are valve, hydrants, piping accessories and associated site work along the water main alignment.

The Contract Price of your Contract is Two Hundred Eighteen Thousand, One Hundred Seventy Five Dollars and 00/100 (218,175.00).

3 copies of each of the proposed Contract Documents accompany this Notice of Award.

A minimum of 5 sets of the Project Manual and Drawings will be delivered separately or otherwise made available to you immediately.

You must comply with the following conditions precedent within [15] days of the date you receive this Notice of Award.

1. Deliver to the Owner [3] fully executed counterparts of the Contract Documents.
2. Deliver with the executed Contract Documents the Contract security [Bonds] as specified in the Instructions to Bidders (Article 20), [and] General Conditions (Paragraph 5.01) [and Supplementary Conditions (Paragraph SC-5.01).]
3. Other conditions precedent:
  - a. Before you may start work at site; paragraph 2.01.B of the General Conditions provides that you must deliver to the Owner (with copies to the ENGINEER and other identified additional insureds) certificates of insurance which you are required to purchase and maintain in accordance with the Contract Documents.
  - b. Paragraph 2.05 states that before starting construction a preliminary progress schedule, a preliminary schedule of submittals, and a preliminary schedule of values are required.

Failure to comply with these conditions within the time specified will entitle Owner to consider you in default, annul this Notice of Award and declare your Bid security forfeited.

Within ten days after you comply with the above conditions, Owner will return to you one fully executed counterpart of the Contract Documents.

Owner: \_\_\_\_\_

Title: \_\_\_\_\_

Authorized  
Signature: \_\_\_\_\_

Copy to Engineer, Owner & Contractor

*Brent Hinson, City Administrator  
Sandra Johnson, Mayor  
Illa Earnest, City Clerk  
Kevin Olson, City Attorney*



*215 East Washington Street  
Washington, Iowa 52353  
(319) 653-6584 Phone  
(319) 653-5273 Fax*

---

---

## **Memorandum**

October 1, 2015

To: Mayor & City Council  
Cc: Illa Earnest, City Clerk

From: Brent Hinson  
City Administrator

Re: Urban Renewal Joint Agreement with Washington County

As the Council is aware, Washington County is planning to assist the Washington County Hospitals & Clinics in refinancing \$13.44 million of their debt, which will save the Hospital approximately \$3.8 million in interest costs over the life of the bonds. To facilitate this, the County will be using a portion of their General Obligation debt capacity, and doing this issuance under the Urban Renewal law allows the issuance to proceed under reverse referendum provisions.

The City's role in this arrangement is that the County needs our permission to establish an Urban Renewal Area within our corporate boundaries. No TIF funds will be used in servicing the debt (nor are any available, since the proposed area is all non-taxable property). The proposed Urban Renewal Area does not overlap with any of our existing areas, and I can't see any reason to keep things from proceeding. The Hospital will be able to reinvest the savings in their facilities and programs. It really appears to be a "win-win" for the community, and in my opinion the Board of Supervisors deserves many thanks from all our area residents for their willingness to assist in this endeavor.

MINUTES TO APPROVE JOINT  
AGREEMENT WITH WASHINGTON  
COUNTY, IOWA PURSUANT TO IOWA  
CODE SECTION 403.17

Washington, Iowa

October 6, 2015

A meeting of the City Council of Washington, Iowa, was held on October 6, 2015, at \_\_\_\_\_ o'clock \_\_\_\_m. at the \_\_\_\_\_, Washington, Iowa. The meeting was called to order by the Mayor, and the roll was called showing the following Council Members present and absent:

Present: \_\_\_\_\_

Absent: \_\_\_\_\_.

**\*\*Other Business\*\***

The City Council took up for consideration a resolution entitled "Resolution Approving Urban Renewal Joint Agreement with Washington County Related to the Establishment of the Washington County Hospital Urban Renewal Area."

After due consideration and discussion, Council Member \_\_\_\_\_ introduced the following resolution and moved its adoption, seconded by Council Member \_\_\_\_\_. The Mayor put the question upon the adoption of said resolution, and the roll being called, the following Council Members voted:

Ayes: \_\_\_\_\_

Nays: \_\_\_\_\_.

Whereupon, the Mayor declared the resolution duly adopted as hereinafter set out.

RESOLUTION NO. \_\_\_\_\_

Resolution Approving Urban Renewal Joint Agreement with Washington County Related to the Establishment of the Washington County Hospital Urban Renewal Area

WHEREAS, a proposal has been made to the Board of Supervisors (the "Board") of Washington County, Iowa (the "County") which shows the desirability of designating a portion of the County as the Washington County Hospital Urban Renewal Area (the "Urban Renewal Area"), pursuant to the provisions of Chapter 403, Code of Iowa; and

WHEREAS, under such proposal the real property (the "Property") lying within the boundaries of the Urban Renewal Area is situated within the corporate boundaries of the City of Washington, Iowa (the "City"); and

WHEREAS, a proposed urban renewal plan (the "Plan") has been prepared for the governance of projects and initiatives to be undertaken in the proposed Urban Renewal Area and which authorizes a certain initial urban renewal project (the "Project") to be undertaken therein consisting of providing an economic development loan to Washington County Hospital and Clinics (i) to pay the costs of the construction of new capital improvements to the Washington County Hospital and Clinics and (ii) to pay the costs of refinancing certain Hospital Revenue Bonds issued by Washington County Hospital and Clinics to finance the construction of its current facilities; and

WHEREAS, in accordance with paragraph 4 of Section 403.17 of the Code of Iowa, a county may exercise urban renewal powers with respect to property which is located inside a city only if the county and city have entered into a joint agreement with respect to such exercise of powers; and

WHEREAS, the Board of the County has requested that the City enter into an Urban Renewal Joint Agreement (the "Joint Agreement") in order to enable the County to exercise urban renewal powers on the Property by establishing the Urban Renewal Area and carrying out the Project; and

WHEREAS, the Joint Agreement has been presented to this Council for consideration;

NOW, THEREFORE, Be It Resolved by the City Council of the City of Washington, Iowa, as follows:

1. The Joint Agreement, in the form attached to this Resolution, is hereby approved, and the Mayor and City Clerk are hereby authorized to execute the Joint Agreement on behalf of the City.

2. All resolutions or parts of resolutions in conflict herewith are hereby repealed to the extent of such conflict.



Passed and approved October 6, 2015.

\_\_\_\_\_  
Mayor

Attest:

\_\_\_\_\_  
City Clerk

• • Other Business • •

On motion and vote, the meeting adjourned.

\_\_\_\_\_  
Mayor

Attest:

\_\_\_\_\_  
City Clerk

## URBAN RENEWAL JOINT AGREEMENT

WHEREAS, pursuant to Chapter 403 of the Code of Iowa, counties have certain urban renewal powers; and

WHEREAS, a proposal has been made to the Board of Supervisors (the "Board") of Washington County, Iowa (the "County") which shows the desirability of designating a portion of the County as the Washington County Hospital Urban Renewal Area (the "Urban Renewal Area"), pursuant to the provisions of Chapter 403, Code of Iowa; and

WHEREAS, under such proposal the real property (the "Property") lying within the boundaries set out in Exhibit A would be designated as the Urban Renewal Area; and

WHEREAS, the Property is situated within the corporate boundaries of the City of Washington, Iowa (the "City"); and

WHEREAS, a proposed urban renewal plan (the "Plan") has been prepared for the governance of projects and initiatives to be undertaken in the proposed Urban Renewal Area and which authorizes a certain initial urban renewal project (the "Project") to be undertaken therein consisting of providing an economic development loan to Washington County Hospital and Clinics (i) to pay the costs of the construction of new capital improvements to the Washington County Hospital and Clinics and (ii) to pay the costs of refinancing certain Hospital Revenue Bonds issued by Washington County Hospital and Clinics to finance the construction of its current facilities; and

WHEREAS, the Board of the County has requested that the City enter into this Joint Agreement in satisfaction of Section 403.17 of the Code Of Iowa in order to enable the County to exercise urban renewal powers within the corporate boundaries of the City by establishing the Washington County Hospital Urban Renewal Area and carrying out the Project;

NOW, THEREFORE, It Is Resolved by the City Council of the City of Washington, Iowa, as follows:

Section 1. The County may exercise urban renewal powers pursuant to Chapter 403 of the Code of Iowa with respect to the property proposed to be included in the Washington County Hospital Urban Renewal Area as shown on Exhibit A hereto in order to carry out the Project.

Section 2. This Agreement is intended to meet the statutory requirements of paragraph 4 of Section 403.17 of the Code of Iowa and shall be effective following approval by the governing bodies of, and execution by the appropriate officials of, the County and the City.

IN WITNESS WHEREOF, the County has caused this Agreement to be executed by the Chairperson of its Board of Supervisors and attested by its County Auditor, and the City has caused this Agreement to be executed by its Mayor and attested by its City Clerk, as of the dates shown below.

WASHINGTON COUNTY, IOWA

By \_\_\_\_\_  
Chairperson, Board of Supervisors

Attest:

\_\_\_\_\_  
County Auditor

Date: \_\_\_\_\_

CITY OF WASHINGTON, IOWA

By \_\_\_\_\_  
Mayor

Attest:

\_\_\_\_\_  
City Clerk

Date: \_\_\_\_\_

EXHIBIT A  
Description of Washington County Hospital Urban Renewal Area

Certain real property comprising the Washington County Hospital and Clinics campuses and situated in the County of Washington, State of Iowa bearing the following Washington County Property Tax Identification Parcel Numbers:

11-20-251-006	11-20-326-002	11-20-251-001
11-20-251-008	11-20-251-009	11-20-251-002

## Brent Hinson

---

**From:** Peters, Donald  
**Sent:** Friday, September 11, 2015 1:15 PM  
**To:** bhinson@washingtونيowa.net  
**Cc:** Dave & Diane (midamericadb@iowatelecom.net); Mendenhall, Carol  
**Subject:** McCreedy city owned streetlights

I talked to Dave Bruns this morning about the 3 city owned streetlights on McCreedy Dr. between Iowa Ave and 2nd Ave. They are not currently working. They are outdated and it was discussed whether to remove or replace each of them. We already have a light at Iowa Ave so that city light can be removed there. I am working on a plan to replace the other two fixtures with Alliant wood poles and new LED lighting. The dedicated wood poles would go onto the city light bill as well as the LED lights. I would question whether the city would like to have a light replaced "mid-block" between Iowa Ave. and 2<sup>nd</sup> Ave. and I am not sure that a pole would fit in there anyway due to trees, engineering limitations, necessity and esthetics. Do we just replace the one light at the intersection of 2<sup>nd</sup> and McCreedy.....i.e. remove 2 and replace 1? When I hear back from you, I will submit a streetlight resolution with diagram. Let me know if you need any more details, etc. Thanks

Donald Peters  
Senior Field Engineering Specialist  
Washington Operations  
(319) 653-8240

---

No virus found in this message.

Checked by AVG - [www.avg.com](http://www.avg.com)

Version: 2015.0.6125 / Virus Database: 4409/10606 - Release Date: 09/09/15



## STREET LIGHTING RESOLUTION

The following Resolution \_\_\_\_\_ was adopted by the City Council of the City of \_\_\_\_\_ at a meeting held on \_\_\_\_\_, 20\_\_\_\_\_.

Be it resolved by the City Council of the City of \_\_\_\_\_, that Alliant Energy Inc. is hereby directed to make the following changes to the existing system, at the locations described below (or shown on an attached map made a part of this Resolution) according to the terms expressed in the existing street light contract:

NEW INSTALLATION OR CHANGES IN EXISTING SYSTEM					
ADD NUMBER	DELETE NUMBER	WATTAGE	STYLE OF LUMINAIRE	TYPE AND HEIGHT OF POLE	WIRING (check one)
1. <u>1</u>		<u>80</u>	<u>LED</u>	<u>Dedicated 35' Wood</u>	<input checked="" type="checkbox"/> OH <input type="checkbox"/> UG
2. _____	<u>3</u>	<u>175</u>	<u>MV</u>	<u>Customer owned cement</u>	<input type="checkbox"/> OH <input checked="" type="checkbox"/> UG
3. _____					<input type="checkbox"/> OH <input type="checkbox"/> UG

LOCATION OF NEW INSTALLATION OR CHANGES	
1. <u>Add one pole and 80 Watt LED streetlight @ intersection of 2nd Ave + McCreedy</u>	
2. <u>Remove one 175 MV same location as #1 above (not working)</u>	
3. <u>Remove two more 175 MV, one @ 115 McCreedy (mid block) and one at intersection of Iowa Ave + McCreedy (not working)</u>	

Mayor \_\_\_\_\_

declared said Resolution duly passed and adopted the \_\_\_\_\_

day of \_\_\_\_\_, 20\_\_\_\_\_.

Attest \_\_\_\_\_

Title \_\_\_\_\_



**RESOLUTION NO. \_\_\_\_\_**

**A RESOLUTION AUTHORIZING LEVY,  
ASSESSMENT, AND COLLECTION OF COSTS TO  
THE WASHINGTON COUNTY TREASURER.**

WHEREAS, the City of Washington, Iowa is empowered to levy, assess, and collect costs of improvement and removal of debris against the abutting property owner,

WHEREAS, tall grass and weeds were removed from the following listed property owners:

The property of Francisco J.L. Rosales and Sonia Y. Leyva at 828 S. Ave. C. for the amount of \$80.00. Legal description (05 18 S Wash). Parcel Number (11-20-106-005).

The property of Kevin McKee (DBA McKee Biz) at 1506 E. Washington St. for the amount of \$250.00. Legal Description (Smouses 2<sup>nd</sup> Add E 107ft OL 1 & W 35ft of S 410ft NE ¼ SW ¼ ). Parcel Number (11-16-312-011)

and,

WHEREAS, due notice was given to the above property owners that said amount would be assessed to the property if payment was not made or an appeal was not made,

NOW, THEREFORE, BE IT RESOLVED BY THE COUNCIL OF THE CITY OF WASHINGTON, IOWA that the City Clerk be instructed to certify the above delinquent payment to be assessed against said property as listed above and that the City Clerk certify a copy of this resolution to the Washington County Treasurer.

Passed and Approved this 6th day of October, 2015.

\_\_\_\_\_  
Sandra Johnson, Mayor

Attest:

\_\_\_\_\_  
Illa Earnest, City Clerk

ORDINANCE NO. \_\_\_\_\_

AN ORDINANCE AMENDING CHAPTERS 164 AND 165 OF THE CODE OF ORDINANCES OF THE CITY OF WASHINGTON BY ALLOWING PARTIAL RESIDENTIAL USE OF THE GROUND LEVEL FLOORS OF BUILDINGS IN A B-1 CENTRAL BUSINESS DISTRICT.

WHEREAS, in order to ensure that the City of Washington has a vital downtown commercial district, the zoning code prohibits the use of certain ground level floors for residential uses; and

WHEREAS, the Council has considered allowing the partial use of ground floors for residential purposes under certain circumstances; and

WHEREAS, the Planning and Zoning Commission has recommended approval of the following ordinance.

NOW, THEREFORE, BE IT ORDAINED, as follows:

1. Amendment. Section 165.01 of the Code of Ordinances is hereby amended by adding the following definition and renumbering all subsequent definitions:

48. *“Ground Floor Residential Conversion means converting to residential use a portion of the ground floor of any structure that is located within the area bounded by Avenue B on the west, 2<sup>nd</sup> Street on the north, 2<sup>nd</sup> Avenue on the east and Jefferson Street on the south but not including the following legally described parcels: Lots 1, 4, 5 and 8 in Block 14; Lot B in Block 7; Lots 5, 6, 7, and 8 in Block 8; Lot 5 in Block 9; Lots 2, 3, 6 and 7 In Block 12; Lot A in Block 19; Lots 1, 2, 3 and 4 in Block 18; and Lot A in Block 17, all in the Original Plat of the Town, now City of Washington, Washington County, Iowa.”*

2. Amendment. Section 165.15(4) of the Code of Ordinances is hereby amended by deleting the section in its entirety and replacing it with the following:

*“4. Prohibited Uses. Dwellings or dwelling units, except for those not occupying the ground floor, or an approved ground floor residential conversion, within the area bounded by Avenue B on the west, 2<sup>nd</sup> Street on the north, 2<sup>nd</sup> Avenue on the east and Jefferson Street on the south, but not including the following legally described parcels: Lots 1, 4, 5 and 8 in Block 14; Lot B in Block 7; Lots 5, 6, 7, and 8 in Block 8; Lot 5 in Block 9; Lots 2, 3, 6 and 7 In Block 12; Lot A in Block 19; Lots 1, 2, 3 and 4 in Block 18;*

*and Lot A in Block 17, all in the Original Plat of the Town, now City of Washington, Washington County, Iowa.”*

3. Amendment. Section 164.02 is hereby amended by striking the last sentence in its entirety and replacing it with the following:

*“Site plans shall only be required whenever a person proposes to place any structure for which a building permit is required under any other section of this Code, on any tract or parcel of and within any district of the Washington Zoning Ordinance, a proposal to perform a Ground Level Residential Conversion or for any other use, except for one-family and two-family residential dwellings.”*

4. Amendment. Section 164.04 is hereby amended by adding subparagraph (20), which reads as follows:

*“20. Ground Level Residential Conversion. An application for a Ground Floor Residential Conversion shall contain the following information:*

- a. Date of preparation, north point and scale.*
- b. Legal description and address of the property to be developed.*
- c. Name and address of the record property owner, the applicant, and the person or firm preparing the site plan.*
- d. Total number, type, and location of dwelling units proposed; proposed uses for all buildings, including clear depiction of the portion requested to be converted to residential and the portion which is to remain in commercial use; total floor area of each building including any planned additions; and any other information which may be necessary to determine the number of off-street parking spaces and loading spaces required by the zoning ordinance.*
- e. Property lines including location(s) of adjacent streets, and all required yard setbacks.*
- f. Location and type of existing or proposed signs and of any existing or proposed lighting on the property which illuminates any part of any required yard.*
- g. Show the parking spaces that will be reserved for said partial residential uses, subject to the requirements of Section 165.21(2) of this Code.”*

5. Amendment. Section 164.05 is hereby amended by deleting the first sentence in entirety and replacing it with the following:

*“Whenever any person proposes to place any structure for which a building permit is required under any other section of this Code, or proposes to perform a Ground Level Residential Conversion, on any tract or parcel of land within any district of the Washington Zoning Ordinance, the person shall submit to the Zoning Administrator a request for a Pre-Application Conference.”*

6. Amendment. Section 164.06 is hereby amended by adding subparagraph 12 which reads as follows:

*“12. Ground Level Residential Conversions. When reviewing an application for a Ground Level Residential Conversion, the applicant must meet the following minimum standards before a Ground Level Residential Conversion can be approved:*

- a. The entire frontage of the ground level which faces the public street shall be used for any uses allowed in the B-1 Central Business District pursuant to Section 165.15 of this Code.*
- b. The portion of the ground level to be converted to residential uses shall be less than 50% of the area of the ground floor and the minimum depth of the commercial space shall be at least 20 feet from the front of the building.*
- c. The proposed conversion must be in compliance with all building and safety codes adopted by the City.*
- d. The owner of the building shall have dedicated parking spaces for the residential uses.*
- e. The following legally described parcels are not eligible for a Ground Level Residential Conversion:*

*Lots 1, 4, 5 and 8 in Block 14; Lot B in Block 7; Lots 5, 6, 7, and 8 in Block 8; Lot 5 in Block 9; Lots 2, 3, 6 and 7 in Block 12; Lot A in Block 19; Lots 1, 2, 3 and 4 in Block 18; and Lot A in Block 17, all in the Original Plat of the Town, now City of Washington, Washington County, Iowa.”*

7. Amendment. Section 165.21(2) is hereby amended by adding the following at the end of said paragraph:

"In the case of Ground Level Residential Conversions, the applicant shall provide one off-street parking stall per residential unit on the site being converted."

7. Repealer. All ordinances or parts of ordinances in conflict with the provisions of this Ordinance are hereby repealed.

8. Effective Date. This Ordinance shall be in effect after its final passage, approval and publication as provided by law.

Passed and approved this \_\_\_\_\_ day of \_\_\_\_\_, 2015.

\_\_\_\_\_  
Sandra Johnson, Mayor

Attest:

\_\_\_\_\_  
Illa Earnest, City Clerk

Approved on First Reading: September 15, 2015

Approved on Second Reading: \_\_\_\_\_

Approved on Third & Final Reading: \_\_\_\_\_

I certify that the foregoing was published as Ordinance No. \_\_\_\_\_ on the  
\_\_\_\_\_ day of \_\_\_\_\_, 2015.

\_\_\_\_\_  
City Clerk



ORDINANCE NO. \_\_\_\_\_

AN ORDINANCE AMENDING THE MUNICIPAL CODE OF  
THE CITY OF WASHINGTON, IOWA, BY AMENDING  
CHAPTER 41, PUBLIC HEALTH AND SAFETY

BE IT ORDAINED by the City Council that the Code of Ordinances of the City of Washington, Iowa be amended as follows:

SECTION 1. **Add Section.** A new Section 41.13 is adopted as follows:

**41.13 SMOKE FREE PLACES.** It is illegal to smoke in a smoke free place, and violation of this section shall be a simple misdemeanor punishable by a fine of fifty dollars (\$50.00). Pursuant to Iowa Code 142D.5, the City declares the following areas to be smoke free places:

A. Central Park.

SECTION 2. **Add Section.** A new Section 41.14 is adopted as follows:

**41.14 ELECTRONIC CIGARETTES.** It is illegal to use an electronic cigarette in any smoke free place listed in Section 41.13 of this Code of Ordinances or in any place where Chapter 142D of the Iowa Code prohibits smoking a tobacco product. Violation of this section shall be a simple misdemeanor punishable by a fine of fifty dollars (\$50.00). Electronic cigarette means vapor product as defined in Section 453A.1 of the Iowa Code.

SECTION 3. **Repealer.** All ordinances or parts of ordinances in conflict with the provisions of this Ordinance are hereby repealed.

SECTION 4. **Effective Date.** This Ordinance shall be in effect after its final passage, approval and publication as provided by law.

Passed and approved this \_\_\_\_\_ day of \_\_\_\_\_, 2015.

\_\_\_\_\_  
Sandra Johnson, Mayor

Attest:

\_\_\_\_\_  
Illa Earnest, City Clerk

Approved on First Reading: September 1, 2015  
Approved on Second Reading: September 15, 2015  
Approved on Third & Final Reading: \_\_\_\_\_

I certify that the foregoing was published as Ordinance No. \_\_\_\_\_ on the \_\_\_\_\_ day of \_\_\_\_\_, 2015.

\_\_\_\_\_  
City Clerk

**ORDINANCE NO. \_\_\_\_\_**

**AN ORDINANCE AMENDING THE MUNICIPAL CODE  
OF THE CITY OF WASHINGTON, IOWA, BY ADDING A NEW  
SECTION 165.07A, "A-2" AGRICULTURAL DISTRICT**

**BE IT ORDAINED** by the City Council that the Code of Ordinances of the City of Washington, Iowa be amended as follows:

SECTION 1. **Add Section.** A new Section 165.07A, "'A-2' Agricultural District", is hereby added as follows:

**"165.07A "A-2" AGRICULTURAL DISTRICT.**

1. Permitted Principal Uses.
  - A. Agriculture and agricultural buildings except as provided by subsection (2)(A) of this section and provided that livestock shall not be housed or fed within two thousand six hundred forty (2,640) feet from the runway center line and runway thresholds associated with Runways 18/36 and 13/31.
  - B. Single-family detached dwellings on lots of twenty (20) acres or more.
  - C. Essential services as defined in Section 165.01.
  - D. Transformer stations and booster or pressure regulating stations, without service yard or storage.
  - E. Public owned airports- Washington Municipal Airport.
2. When Authorized by Board of Adjustment.
  - A. Lots for confinement and feeding of livestock subject to controls of surface run-off and located as follows:
    - (1) The area under the Approach Surface extending beyond Runways 18 and 36: Two Thousand Six Hundred Forty (2,640) feet.
    - (2) The area under the Approach Surface extending beyond Runways 13 and 31: One Thousand Three Hundred Twenty (1,320) feet.

(3) The area under the Transitional, Horizontal or Conical Surface: One Thousand Eight Hundred Twenty (1,820) feet from the runway center line associated with Runways 18 and 36; One Thousand Five Hundred Seventy (1,570) feet from the runway center line associated with Runways 13 and 31.

B. Orchards, tree farms and vineyards.

C. Permanent ponds.

D. A single family detached dwelling located on a lot or parcel which is less than twenty (20) acres as long as the lot or parcel upon which said single family detached dwelling will be constructed was:

(1) Part of an original lot or parcel that totals more than forty (40) acres; and

(2) The original lot or parcel was occupied by, and owned or beneficially controlled, by a lineal descendant or ancestor of the beneficial owner of the original lot or parcel as defined in Section 450.9 of the Code of Iowa.

3. Permitted Accessory Uses.

A. Buildings, structures, and uses accessory to agricultural uses including roadside stands, selling produce grown on the premises, provided such roadside stands are located not less than twenty (20) feet from a street or highway right-of-way line.

B. Private garages or parking areas.

C. Living quarters of persons employed on the premises.

D. Home occupation as defined and regulated by Section 165.22.

E. Signs as regulated by Section 165.20.

4. Height Regulations. No principal structure shall exceed two and one-half (2½) stories or thirty (30) feet in height, and no accessory structure shall exceed fifteen (15) feet in height, except as provided in Section 165.23.

5. Lot Area, Frontage and Yard Requirements. The following minimum requirements shall be observed subject to the additional requirements, exceptions and modifications in Section 165.23. Each lot shall contain a minimum area of twenty (20) acres, except as allowed by the Board of Adjustment subject to 165.07A(2D).

MINIMUM LOT WIDTH	MINIMUM FRONT YARD DEPTH	MINIMUM SIDE YARD WIDTH	MINIMUM REAR YARD DEPTH
300 feet	Along State and Federal roads, 80'; Other public roads, 60'	30 feet	100 feet

”

SECTION 2. **Repealer.** All ordinances or parts of ordinances in conflict with the provisions of this Ordinance are hereby repealed.

SECTION 3. **Effective Date.** This Ordinance shall be in effect after its final passage, approval and publication as provided by law.

Passed and approved this \_\_\_\_\_ day of \_\_\_\_\_, 2015.

\_\_\_\_\_  
Sandra Johnson, Mayor

Attest:

\_\_\_\_\_  
Illa Earnest, City Clerk

Approved on First Reading: September 1, 2015  
Approved on Second Reading: September 15, 2015  
Approved on Third & Final Reading: \_\_\_\_\_

I certify that the foregoing was published as Ordinance No. \_\_\_\_\_ on the \_\_\_\_\_ day of \_\_\_\_\_, 2015.

\_\_\_\_\_  
City Clerk