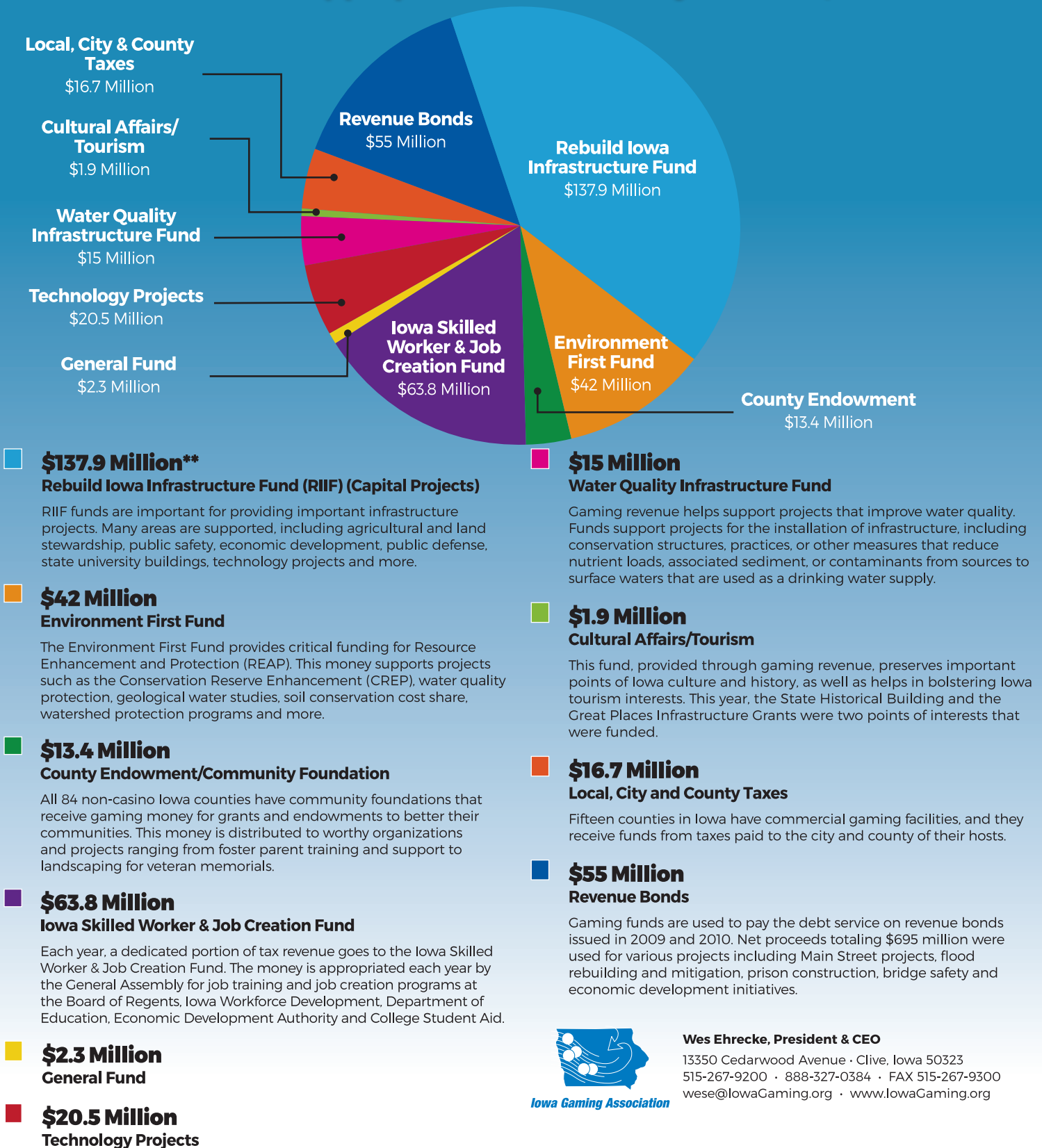


# Gaming Revenues Benefit Iowa

Estimated FY 2023 Appropriations and Outlays. Total = \$368.4 Million\*



**\$137.9 Million\*\***  
**Rebuild Iowa Infrastructure Fund (RIIF) (Capital Projects)**  
 RIIF funds are important for providing important infrastructure projects. Many areas are supported, including agricultural and land stewardship, public safety, economic development, public defense, state university buildings, technology projects and more.

**\$42 Million**  
**Environment First Fund**  
 The Environment First Fund provides critical funding for Resource Enhancement and Protection (REAP). This money supports projects such as the Conservation Reserve Enhancement (CREP), water quality protection, geological water studies, soil conservation cost share, watershed protection programs and more.

**\$13.4 Million**  
**County Endowment/Community Foundation**  
 All 84 non-casino Iowa counties have community foundations that receive gaming money for grants and endowments to better their communities. This money is distributed to worthy organizations and projects ranging from foster parent training and support to landscaping for veteran memorials.

**\$63.8 Million**  
**Iowa Skilled Worker & Job Creation Fund**  
 Each year, a dedicated portion of tax revenue goes to the Iowa Skilled Worker & Job Creation Fund. The money is appropriated each year by the General Assembly for job training and job creation programs at the Board of Regents, Iowa Workforce Development, Department of Education, Economic Development Authority and College Student Aid.

**\$2.3 Million**  
**General Fund**


**\$20.5 Million**  
**Technology Projects**

**\$15 Million**  
**Water Quality Infrastructure Fund**  
 Gaming revenue helps support projects that improve water quality. Funds support projects for the installation of infrastructure, including conservation structures, practices, or other measures that reduce nutrient loads, associated sediment, or contaminants from sources to surface waters that are used as a drinking water supply.

**\$1.9 Million**  
**Cultural Affairs/Tourism**  
 This fund, provided through gaming revenue, preserves important points of Iowa culture and history, as well as helps in bolstering Iowa tourism interests. This year, the State Historical Building and the Great Places Infrastructure Grants were two points of interests that were funded.

**\$16.7 Million**  
**Local, City and County Taxes**  
 Fifteen counties in Iowa have commercial gaming facilities, and they receive funds from taxes paid to the city and county of their hosts.

**\$55 Million**  
**Revenue Bonds**  
 Gaming funds are used to pay the debt service on revenue bonds issued in 2009 and 2010. Net proceeds totaling \$695 million were used for various projects including Main Street projects, flood rebuilding and mitigation, prison construction, bridge safety and economic development initiatives.



**Wes Ehrecke, President & CEO**  
 13350 Cedarwood Avenue • Clive, Iowa 50323  
 515-267-9200 • 888-327-0384 • FAX 515-267-9300  
 wese@IowaGaming.org • www.IowaGaming.org

\* The gaming industry pays an additional \$17 million to the state for regulatory-related costs associated with the Department of Public Safety and the Iowa Racing and Gaming Commission.  
 \*\* \$3.8 million of wagering tax revenue is first allocated to the Federal Subsidy Holdback Fund that will help pay the debt service on the 2009 Revenue Bonds if the federal subsidy on the Build America Bonds is not received. Once the subsidy is received, that amount is transferred to the RIIF.  
 \*\*\* Anything unneeded for debt service on revenue bonds transfers back to the RIIF. For FY 2023, that amount is estimated at \$10.7 million.

## Rebuild Iowa Infrastructure Fund (RIIF), \$137.9† (multiple sources)

- **Administrative Services, \$23.5m**
- **Agricultural & Land Stewardship, \$19.2m**
  - Water Quality Initiative
  - Renewable Fuels Infrastructure Fund
- **Department for the Blind, \$197k**
- **Department of Corrections, \$9.7m**
  - DOC Capitals Request
  - Clarinda Kitchen Renovation
- **Cultural Affairs, \$1.3m**
- **Economic Development \$24.7m**
  - Community Attraction & Tourism Grants
  - Sports Tourism Program
- **Homeland Security and Emergency Mgmt, \$650k**
- **Human Services, \$4.9m**
  - DHS Facility Renovation and Remodeling
- **Iowa Finance Authority, \$3m**
- **Judicial Branch, \$790k**
- **Legislative Branch, \$5.8m**
- **Department of Natural Resources, \$17.2m**
  - State Park Infrastructure
  - Lake Restoration & Water Quality
- **Public Defense, \$8.5m**
  - Facility/Armory Maintenance
  - Modernization - Readiness Centers
- **Public Safety, \$8.9m**
- **Regents, \$85m**
  - ISU Student Innovation Center & Veterinary Lab
  - Tuition Replacement
  - UNI Industrial Tech Center
- **State Fair Barn Restoration, \$6m**
- **Transportation, \$8.9m**
  - Commercial Air Service Vertical Infrastructure Grants
  - Recreational Trails
- **Treasurer, \$1.1m**

## Environment First Fund, \$42m

- **Department of Agriculture, \$17.3m**
  - Soil Conservation Cost Share
  - Soil & Water Conservation Fund
  - Water Quality Initiative
  - Conservation Reserve Enhancement (CREP)

- **Department of Natural Resources, \$24m**

- REAP Program
- Park Operations & Maintenance
- Water Quality Monitoring Stations
- Animal Feeding Operations

- **Board of Regents, \$695k**

## Water Quality Infrastructure Fund, \$15m

## Cultural Affairs/Tourism, \$1.9m

## Iowa Skilled Worker & Job Creation Fund, \$63.8m

- **College Student Aid Comm., \$5m**
- **Economic Development Authority, \$14.5m**
  - High Quality Jobs
  - STEM Internships
  - Future Ready Iowa Mentor Program
  - Empower Rural Iowa Housing Needs & Innovation
- **Department of Education, \$35.3m**
  - Workforce Training & Economic Development Funds
  - Adult Literacy for the Workforce
  - ACE Infrastructure
  - PACE & Regional Sectors
  - Gap Tuition Assistance Fund
  - Work-based Learning Intermediary Network
- **Iowa Workforce Development, \$250k**

- **Board of Regents, \$8.7m**

- Regents Innovation Fund
- ISU - Economic Development
- UI - Economic Development
- UI - Entrepreneurship & Economic Growth
- UNI - Economic Development

## General Fund, \$2.3m

## Revenue Bonds, \$55m\*\*\*

## Technology Reinvestment Fund, \$20.5m

- **Department of Corrections, \$2.8m**
- **Department of Education, \$4.3m**
  - ICN Part III Maintenance and Leases
  - IPBS Equipment Replacement
- **Department of Homeland Security, \$400k**
- **Department of Human Rights, \$1.6m**
- **Department of Human Services, \$1.5m**
- **Iowa Communications Network, \$1.5m**
- **Department of Inspections and Appeals, \$760k**
- **Judicial Branch, \$650k**
- **Department of Management, \$617k**
- **Department of Public Defense, \$500k**
- **Department of Public Safety, \$385k**
- **Department of Revenue, \$4.1m**
- **Secretary of State, \$1.4m**

## County Endowment/Community Foundation, \$13.4m

## Local, City and County Taxes, \$16.7m

Qualified community foundations in 84 non-casino counties each receive a proportionate share for grants and endowments to benefit thousands of worthy organizations and projects. For more detailed information and an annual report, please visit [www.iowaGaming.org](http://www.iowaGaming.org).

† Some programs are partially funded with non-gaming revenue. \*\*\* Anything unneeded for debt service on revenue bonds transfers back to the RIIF. For FY 2023, that amount is estimated at \$10.7 million.